

**OIK-07311**

Meyer, N., Bollache, L., Dechaume-Moncharmont, F.-X.,  
Moreau, J., Afonso, E., Angerbjörn, A., Bêty, J., Ehrich, D.,  
Gilg, V., Giroux, M.-A., Hansen, J., Lanctot, R. B., Lang, J.,  
Lecomte, N., McKinnon, L., Reneerkens, J., Saalfeld, S. T.,  
Sabard, B., Schmidt, N. M., Sittler, B., Smith, P., Sokolov, A.,  
Sokolov, V., Sokolova, N., van Bemmelen, R. and Gilg, O.  
2020. Nest attentiveness drives nest predation in arctic  
sandpipers. – Oikos doi: 10.1111/oik.07311

Appendix 1

Table A1. Number of nests monitored in the field and included in our analyses for different species, sites and years (same abbreviations as in Figure 1). Nests are classified according to their fate with H: hatched, P: depredated, C: censored, and TOT: total.

species	site	year	Number of nests monitored in the field		Number of nests used in GLMMs analyses				Number of nests used in Cox analyses						
			TOT	days monitored (mean ± SD)	TOT	H	P	C	days monitored (mean ± SD)	TOT	H	P	C	days monitored (mean ± SD)	
<i>Calidris bairdii</i>	BYLO	2016	19	10.1 ± 6.2	18	13	4	1	10.3 ± 5.8	18	13	4	1	10.6 ± 5.9	
		2017	29	7.1 ± 6.2	22	10	12	-	7.5 ± 5.9	22	10	12	-	7.7 ± 5.9	
		2018	12	3.7 ± 3.3	8	2	6	-	3.8 ± 3.2	8	2	6	-	4.6 ± 3.6	
<i>Calidris alpina</i>	AMMA	2016	10	11.8 ± 5.8	9	4	1	4	12.7 ± 5	5	4	1	-	9.8 ± 2.2	
		2017	8	13.4 ± 6.1	8	4	4	-	11.4 ± 6.5	8	4	4	-	13.4 ± 6.1	
		2018	5	7 ± 5.6	4	3	1	-	5.8 ± 5.2	4	3	1	-	7.5 ± 6.4	
	UTQI	2016	20	14.4 ± 5.9	3	2	1	-	6.7 ± 3.5	3	2	1	-	12.7 ± 3.5	
		2017	20	8.1 ± 5.1	19	3	16	-	8.4 ± 4.9	19	3	16	-	8.4 ± 4.9	
		2018	18	10.3 ± 5.9	17	6	8	3	10.8 ± 5.7	17	6	8	3	10.8 ± 5.6	
	CHUR	2016	13	6.5 ± 2.9	6	5	-	1	4.3 ± 2.5	6	5	-	1	6 ± 2.2	
		2017	8	12.5 ± 2.8	8	7	1	-	22.8 ± 9.4	8	7	1	-	22.9 ± 9.2	
		2018	8	7 ± 4.1	6	1	4	1	8.2 ± 7.8	6	1	4	1	8.2 ± 7.8	
	HOCH	2016	1	1 ± 0	-	-	-	-	-	-	-	-	-	-	
		2017	8	5.1 ± 4.2	6	2	4	-	6.5 ± 3.9	6	2	4	-	6.5 ± 3.9	
		2018	2	11.5 ± 6.4	2	1	-	1	10.5 ± 4.9	2	1	-	1	11.5 ± 6.4	
SABE	2016	10	11.9 ± 6.6	9	4	3	2	12.7 ± 6.2	9	4	3	2	13.1 ± 5.7		
	2017	16	8.9 ± 7.1	12	4	6	2	10.5 ± 5.9	12	4	6	2	11.5 ± 6.2		
	2018	15	4.1 ± 4.9	8	-	3	5	6.9 ± 5.5	7	-	2	5	7.7 ± 5.4		
ZACK	2016	5	7 ± 7.2	3	3	-	-	5 ± 2.6	3	3	-	-	5 ± 2.6		
<i>Calidris minuta</i>	BELY	2016	6	7.5 ± 1.4	6	2	1	3	7.5 ± 1.4	6	2	1	3	7.5 ± 1.4	
		2017	19	3.5 ± 2.7	13	-	6	7	4.6 ± 2.5	13	-	6	7	4.6 ± 2.5	
	SABE	2016	15	8.3 ± 3.8	14	10	4	-	8.4 ± 3.3	14	10	4	-	8.9 ± 3.3	
		2017	13	6.5 ± 7.1	6	-	4	2	11.2 ± 6.2	6	-	4	2	12.5 ± 6.5	
2018	23	6.7 ± 4.8	16	-	8	8	6.4 ± 3.8	14	-	7	7	7.6 ± 4.4			
<i>Calidris alba</i>	HOCH	2016	20	6.3 ± 4.3	15	14	1	-	7.4 ± 3.8	15	14	1	-	7.5 ± 3.8	
		2017	9	3.3 ± 2.5	7	3	4	-	4 ± 2.4	7	3	4	-	4 ± 2.4	
		2018	2	3 ± 2.8	-	-	-	-	-	-	-	-	-	-	
	KVPE	2016	12	8.8 ± 4.5	11	6	5	-	8.3 ± 4.5	11	6	5	-	8.9 ± 4.8	
		2017	5	7.4 ± 6.7	2	1	1	-	11 ± 1.4	2	1	1	-	14 ± 2.8	
		2018	5	9.4 ± 7.6	-	-	-	-	-	-	-	-	-	-	
	ZACK	2016	44	6.4 ± 3.8	41	17	14	10	7.4 ± 5.8	16	16	-	-	8.4 ± 6.3	
		2017	5	2.4 ± 2.1	3	-	3	-	2.7 ± 2.1	3	-	3	-	3 ± 2.6	
<i>Calidris pusilla</i>	UTQI	2016	20	9.6 ± 4.5	15	15	-	-	9.9 ± 3.9	15	15	-	-	10.9 ± 3.8	
		2017	23	7 ± 5.8	19	2	17	-	7.9 ± 5.7	19	2	17	-	8.2 ± 5.7	
		2018	15	13.3 ± 6.3	11	7	3	1	15.5 ± 3.2	11	7	3	1	15.7 ± 3.4	
<i>Calidris temminckii</i>	BELY	2016	1	8 ± 0	-	-	-	-	-	-	-	-	-	-	
		ERKU	2016	22	10.4 ± 5.5	17	14	3	-	11.2 ± 4.2	17	14	3	-	11.8 ± 4.5
			2017	9	12.9 ± 5.9	9	5	4	-	12 ± 5.6	8	5	3	-	12.2 ± 5.9
	2018	19	9.3 ± 6.9	18	5	13	-	9.4 ± 6.9	18	5	13	-	9.8 ± 6.8		
	SABE	2016	18	11.6 ± 6.3	16	7	7	2	10.9 ± 6.3	14	7	5	2	12.3 ± 6.1	
		2017	10	6.1 ± 6.9	7	-	4	3	7.4 ± 6.4	7	-	4	3	8.3 ± 7.3	
2018		20	5.4 ± 3	12	-	3	9	5.5 ± 1.5	12	-	3	9	6.9 ± 2.7		
<i>Calidris fuscicollis</i>	BYLO	2017	4	8 ± 8.7	2	1	1	-	13.5 ± 7.8	2	1	1	-	15 ± 5.7	
		2018	14	5.1 ± 5.1	8	2	6	-	7.6 ± 4.9	8	2	6	-	8.2 ± 4.7	
	EABA	2016	19	2 ± 1.5	6	-	6	-	2.7 ± 0.8	6	-	6	-	2.7 ± 0.8	
		2017	29	4.6 ± 4.1	6	-	5	1	4.3 ± 2.3	6	-	5	1	5.5 ± 3.4	
		2018	15	5.9 ± 6.1	2	-	2	-	1.5 ± 0.7	2	-	2	-	3.5 ± 3.5	
	IGLO	2016	27	11.1 ± 5	24	18	6	-	11.8 ± 4.3	24	18	6	-	11.8 ± 4.3	
		2017	17	8.9 ± 4.3	15	2	11	2	8.1 ± 4	15	2	11	2	9.2 ± 4	
2018		27	4.7 ± 5.1	16	3	13	-	6.6 ± 5.6	15	3	12	-	7.3 ± 5.5		
total			714		505	208	229	68		469	207	209	53		

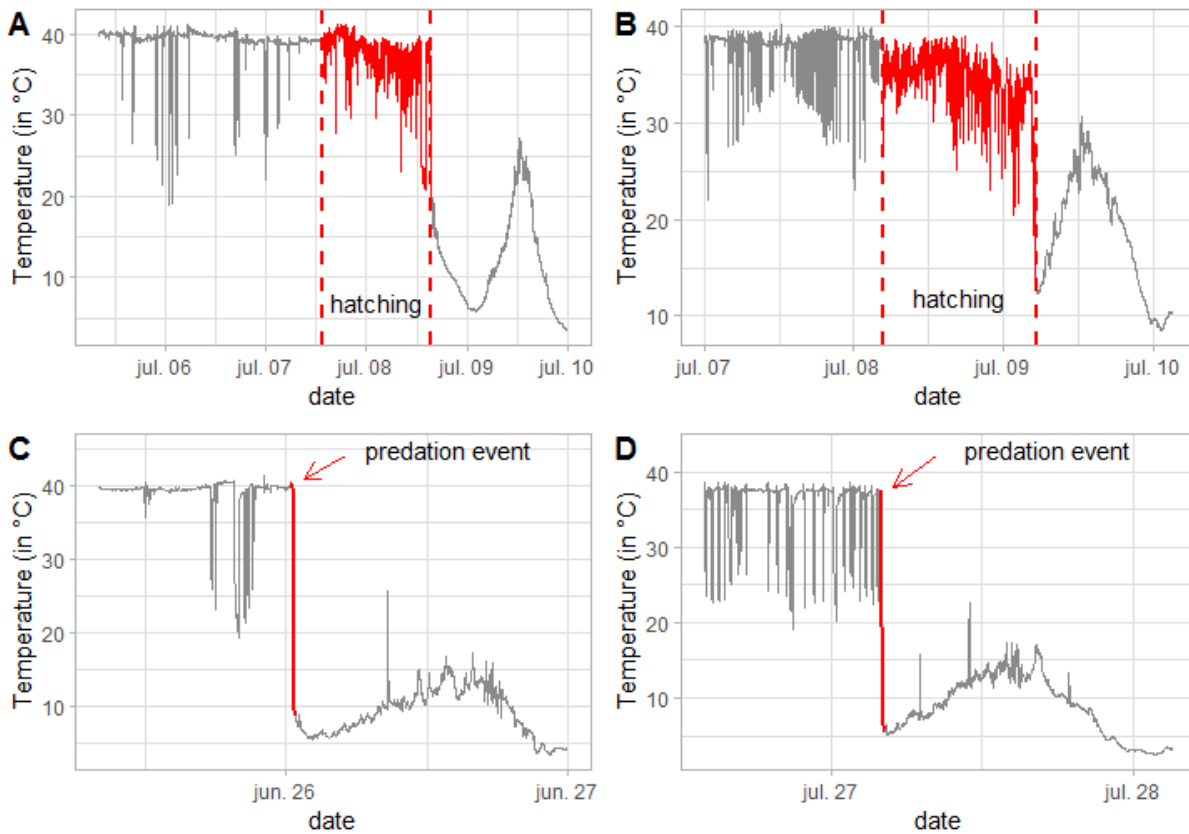


Figure A1. Examples of nest temperature profiles recorded for biparental (A and C) and uniparental (B and D) species. The continuous red line represents the part of the curve that is used to determine the fate of the nest. Red lines in (A) and (B) show the temperature profile of two nests during hatching with a declining trend and a high variability of recorded temperatures during several hours before recording environmental temperature (i.e. in the empty nest cup). Red lines in (C) and (D) show temperature profiles of two nests that experienced a predation event. Here, an abrupt drop of the incubation temperature before recording environmental temperatures is present.

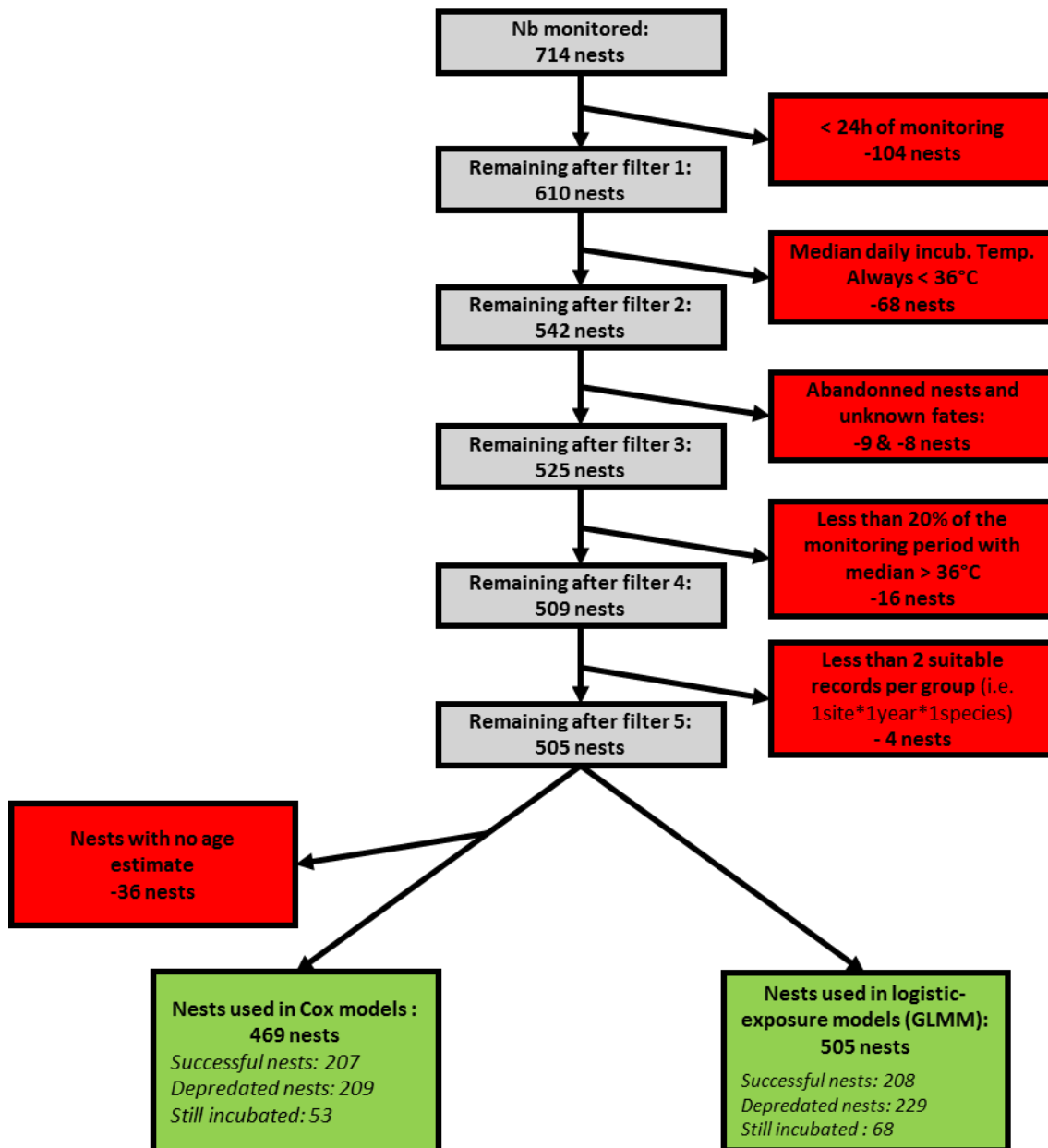
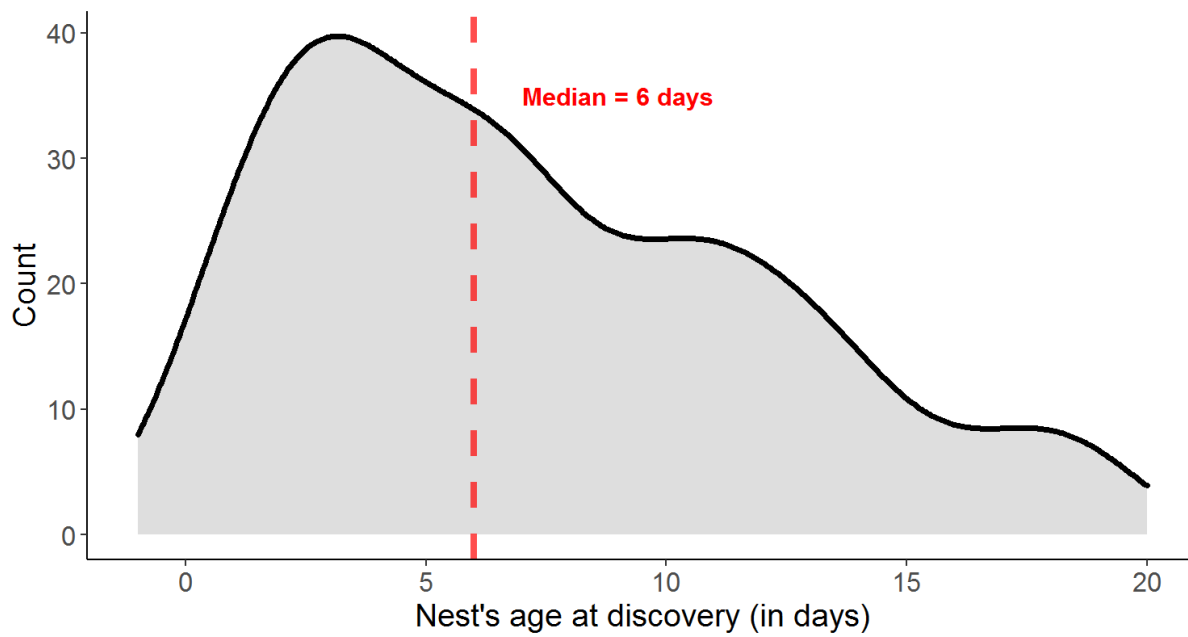


Figure A2. Nest data filtering procedure followed to perform logistic-exposure and Cox models.



+

Figure A3. Distribution of nest age (i.e. stage of incubation) at discovery for the 469 nests used in the Cox models.