

Vandelook, F., Janssens, S. B. and Matthies, D. 2018.  
Ecological niche and phylogeny explain distribution of  
seed mass in the central European flora. – Oikos doi:  
10.1111/oik.05239

## Appendix 1

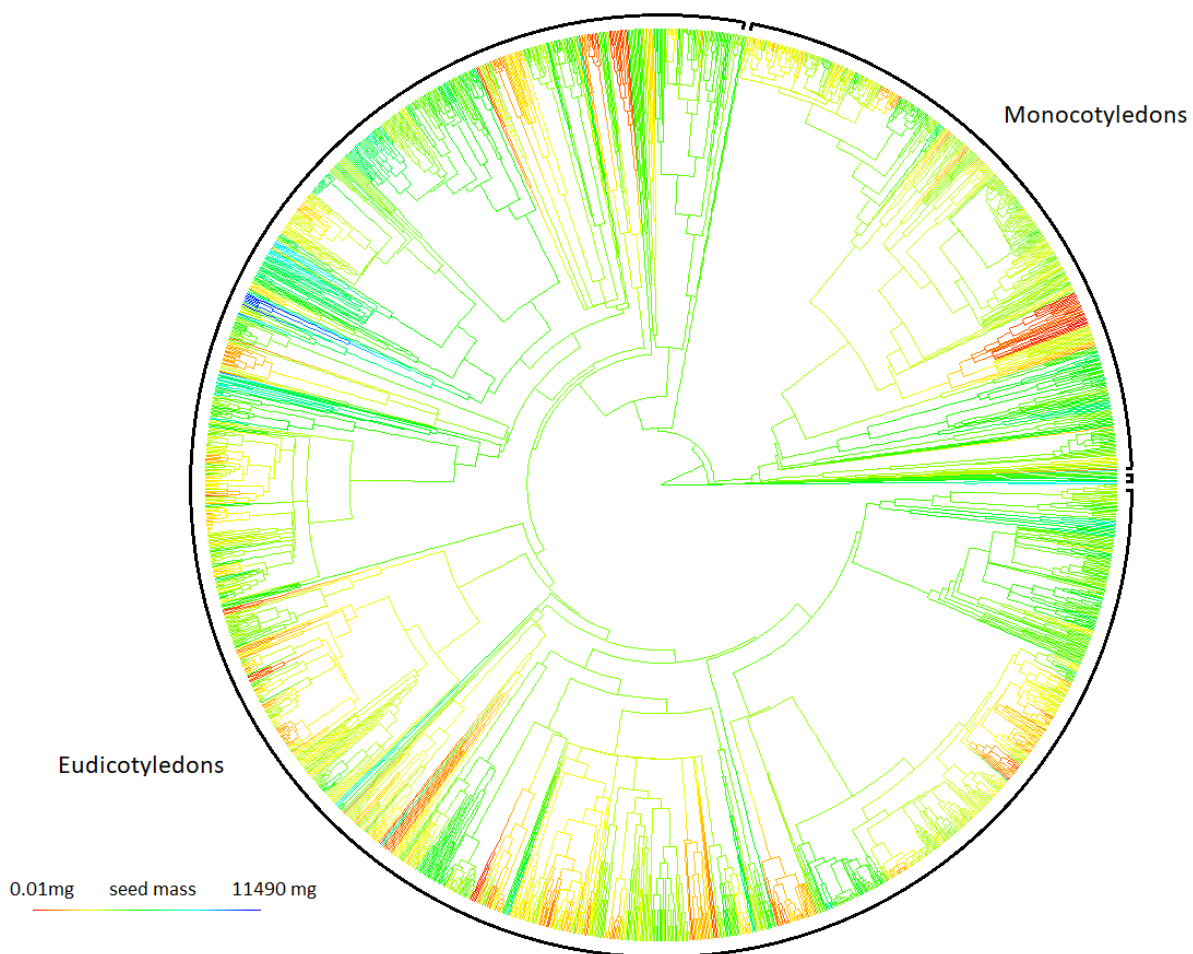
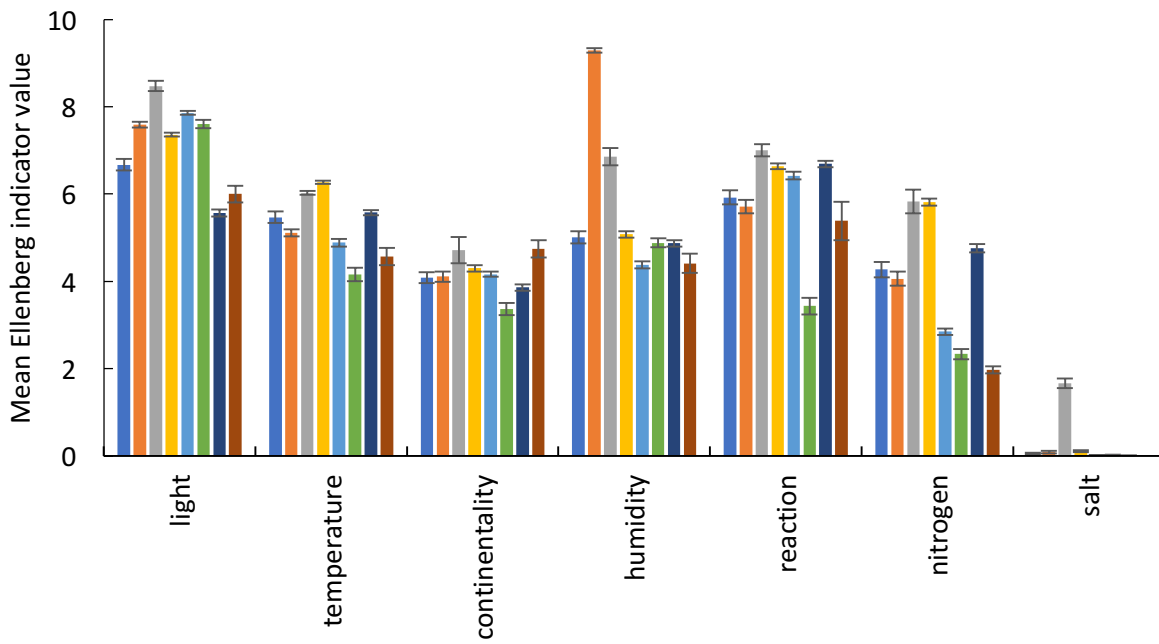
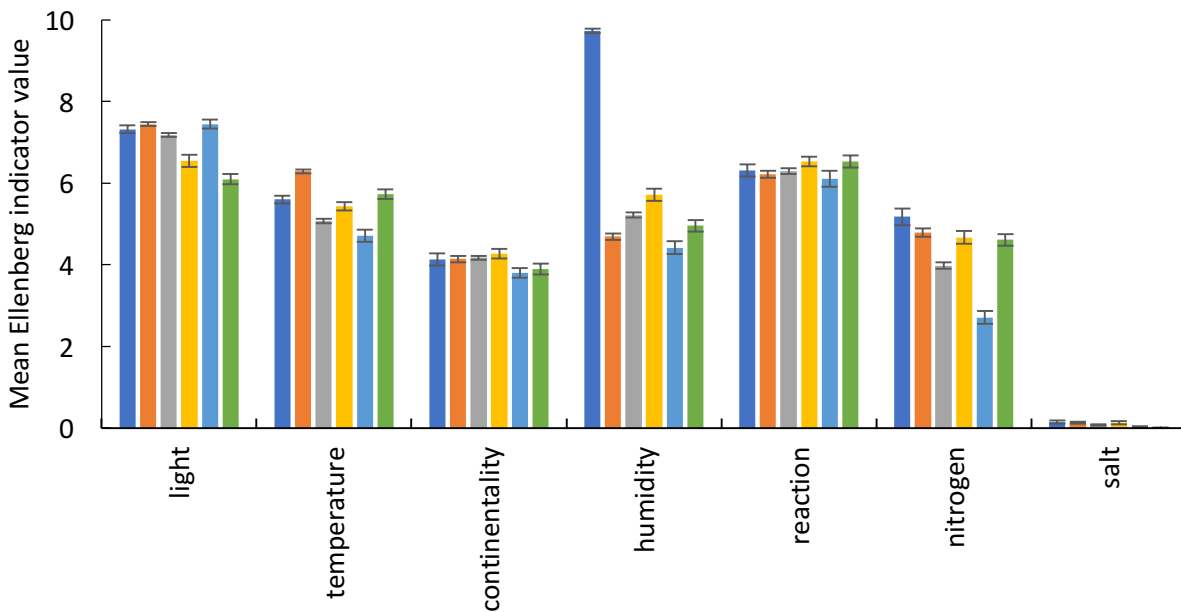


Figure A1. Ancestral state reconstruction of seed mass plotted on a phylogeny (Phytools package (Revell 2017) in R ver. 3.0.2) of the central European flora derived from the ‘Daphne’ phylogeny (Durka and Michalski 2012). Total tree age is 167.3 Myr.



- Undefined (n = 119)
- Freshwater and moors (n = 191)
- Saltwater and seashore (n = 42)
- Ruderal (n = 469)
- Dry grasslands and meadows (n = 539)
- Heath and acidic grasslands (n = 69)
- Deciduous forest and forest edges (n = 356)
- Coniferous forest (n = 39)



- Helophyte (n = 93)
- Therophyte (n = 429)
- Hemicryptophyte (n = 876)
- Geophyte (n = 155)
- Chamaephyte (n = 146)
- Phanerophyte (n = 125)

Figure A2. Mean Ellenberg indicator values for plants growing in different habitats (upper) and different life forms (lower). Error bars denote  $\pm 1$  SE. Numbers in brackets indicate number of species for each habitat.