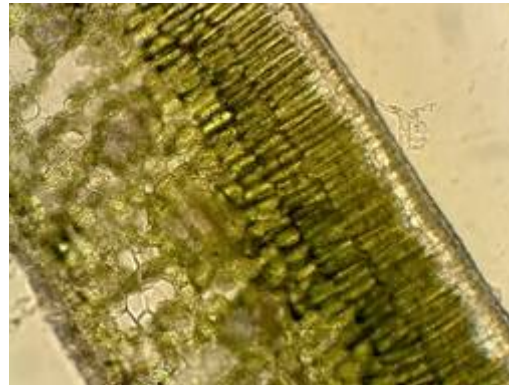


Supplemental material 1

An illustration of young leaves, and transverse sections, adaxial and abaxial surfaces, and data of leaf thickness of young and mature leaves in 76 species.

Ying-Zhuo Chen & Shuang-Quan Huang
College of Life Sciences, Wuhan University, Wuhan 430072, China

Ilex cornuta Lindl. et Paxt.
Aquifoliaceae



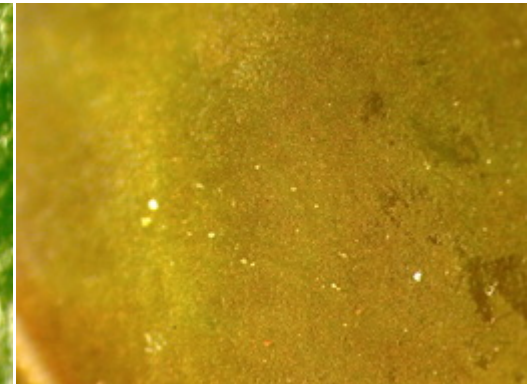
Mature leaf



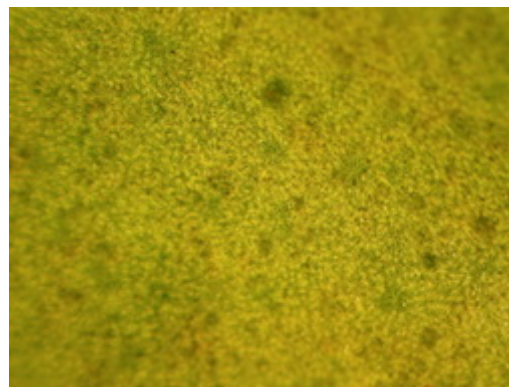
Young leaf



Adaxial surface



Adaxial surface



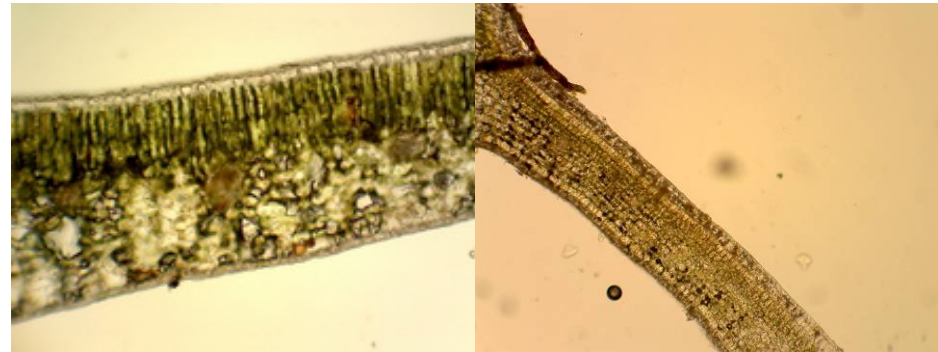
Abaxial surface



Abaxial surface

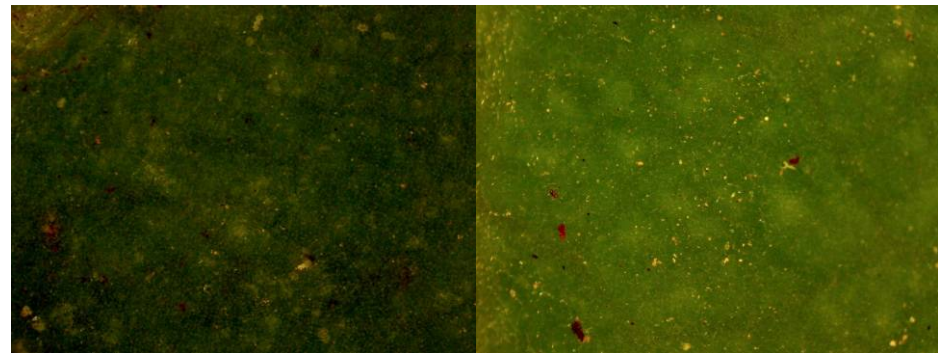
	Cuticle (mm)	Epidermis (mm)	Lamina (mm)
Mature leaf	0.0095	0.036	0.24
Young leaf	0.0028	0.021	0.32

Viburnum odoratissimum Ker.-Gawl.
Caprifoliaceae



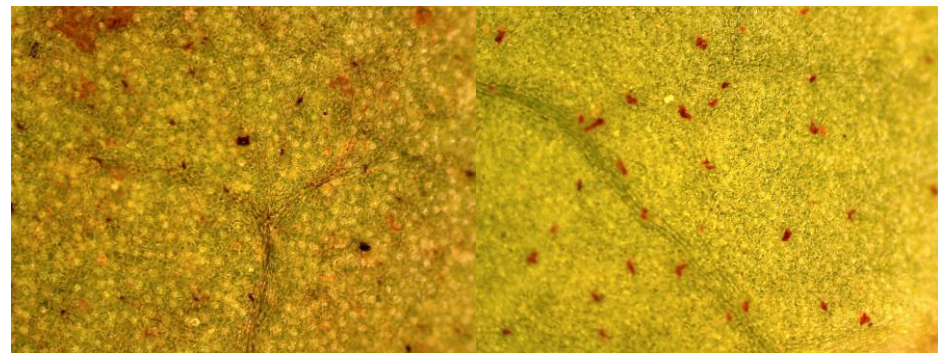
Mature leaf

Young leaf



Adaxial surface

Adaxial surface



Abaxial surface

Abaxial surface

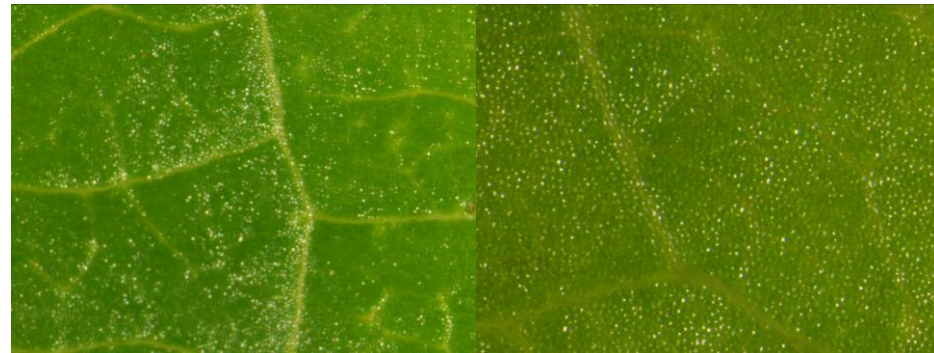
	Cuticle (mm)	Epidermis (mm)	Lamina (mm)
Mature leaf	0.0079	0.030	0.67
Young leaf	0.0035	0.025	0.74

Lonicera japonica Thunb.
Caprifoliaceae



Mature leaf

Young leaf



Adaxial surface

Adaxial surface

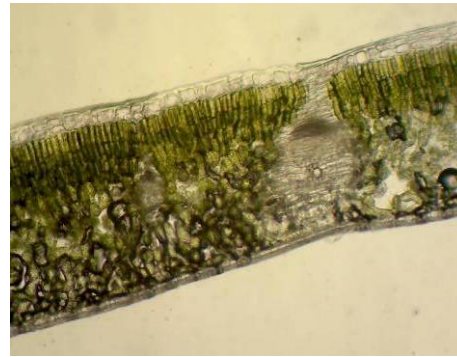


Abaxial surface

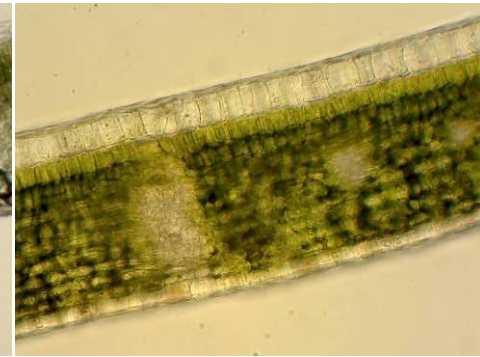
Abaxial surface

	Cuticle (mm)	Epidermis (mm)	Lamina (mm)
Mature leaf	0.0031	0.027	0.20
Young leaf	0.0022	0.015	0.12

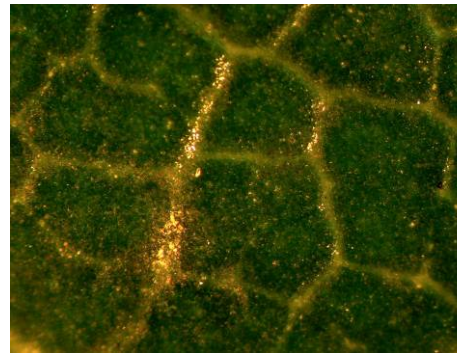
Pittosporum glabratum Lindl.
Pittosporaceae



Mature leaf



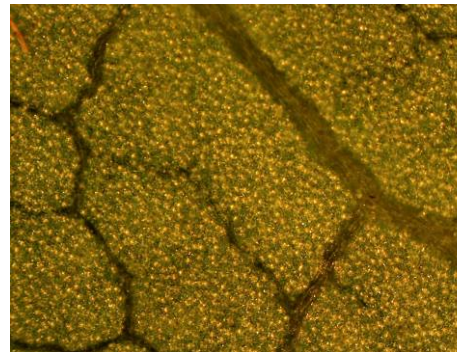
Young leaf



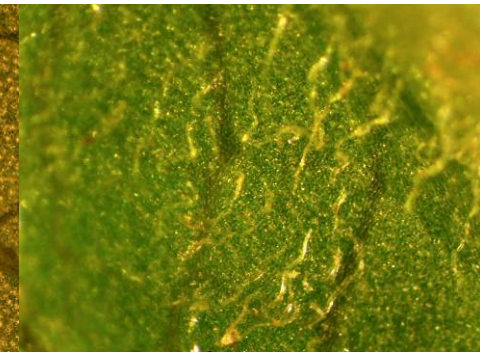
Adaxial surface



Adaxial surface



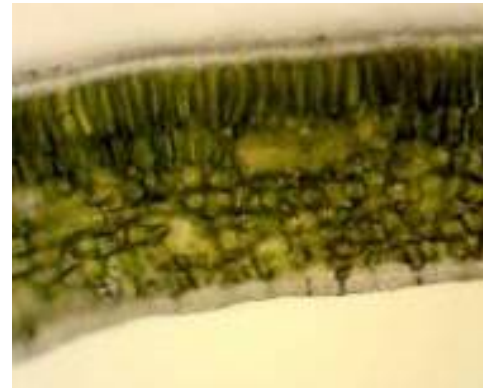
Abaxial surface



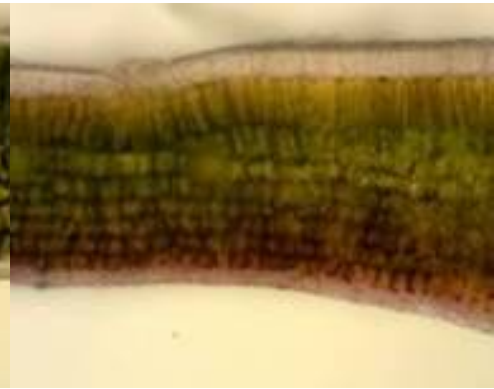
Abaxial surface

	Cuticle (mm)	Epidermis (mm)	Lamina (mm)
Mature leaf	0.0089	0.034	0.33
Young leaf	0.0051	0.030	0.19

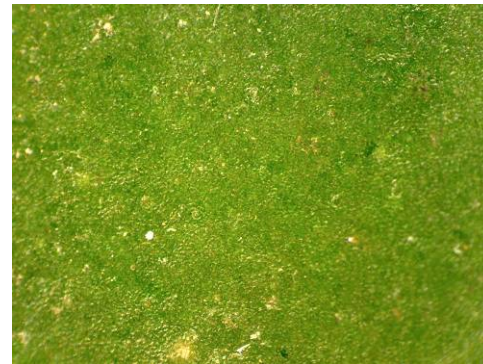
Ligustrum lucidum Ait.
Oleaceae



Mature leaf



Young leaf



Adaxial surface



Adaxial surface



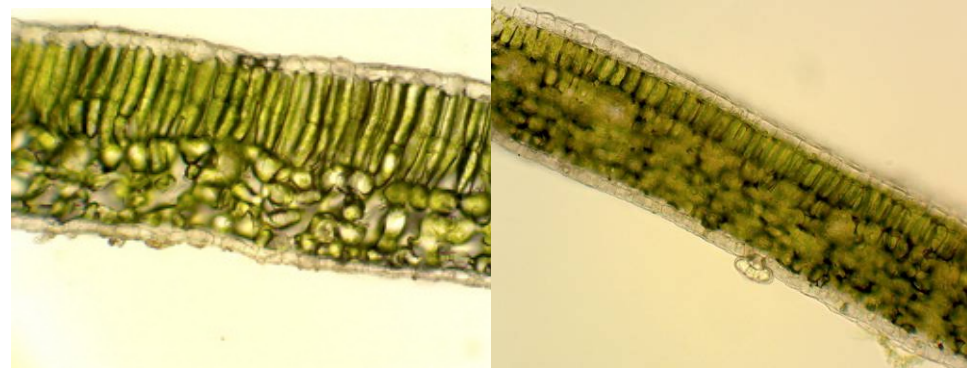
Abaxial surface



Abaxial surface

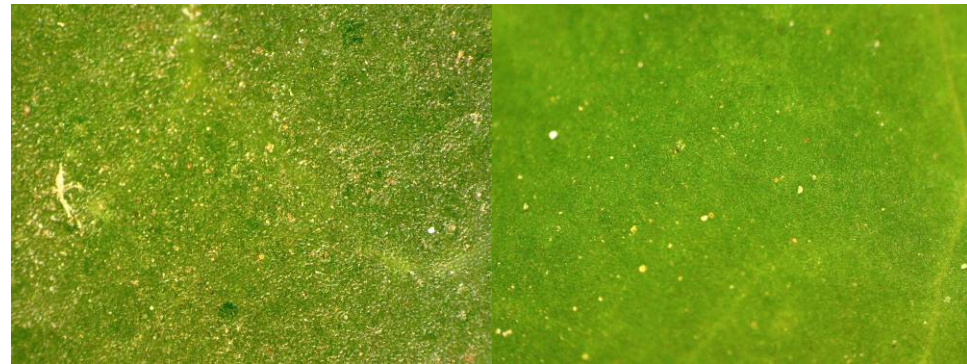
	Cuticle (mm)	Epidermis (mm)	Lamina (mm)
Mature leaf	0.0059	0.026	0.19
Young leaf	0.0029	0.023	0.19

Ligustrum quihoui Carr.
Oleaceae



Mature leaf

Young leaf



Adaxial surface

Adaxial surface

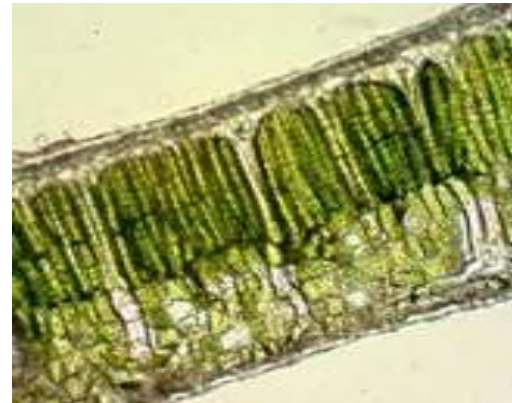
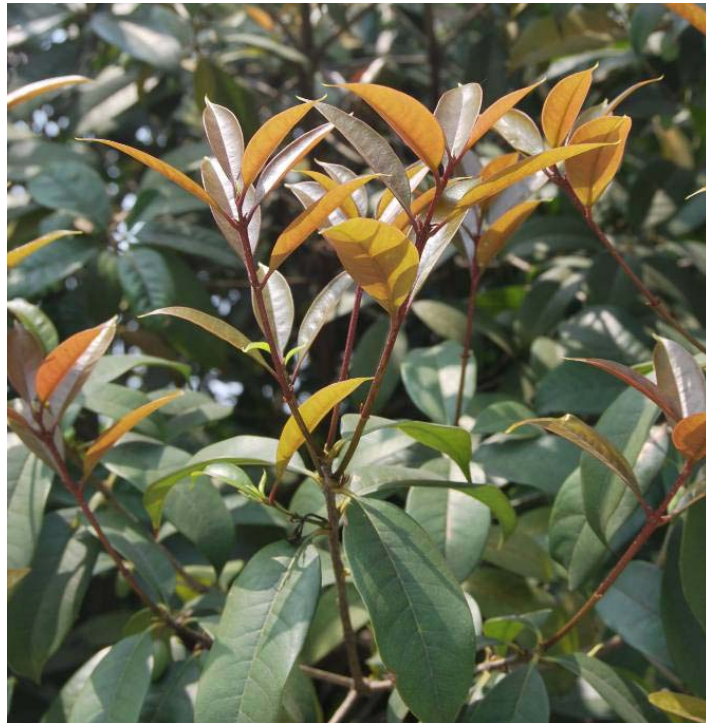


Abaxial surface

Abaxial surface

	Cuticle (mm)	Epidermi s (mm)	Lamina (mm)
Mature leaf	0.0093	0.023	0.30
Young leaf	0.0076	0.021	0.21

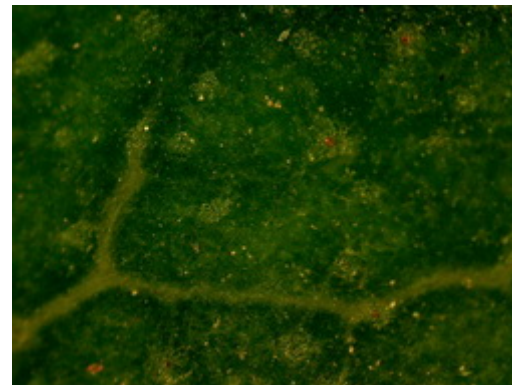
Osmanthus fragrans (Thunb.) Lour.
Oleaceae



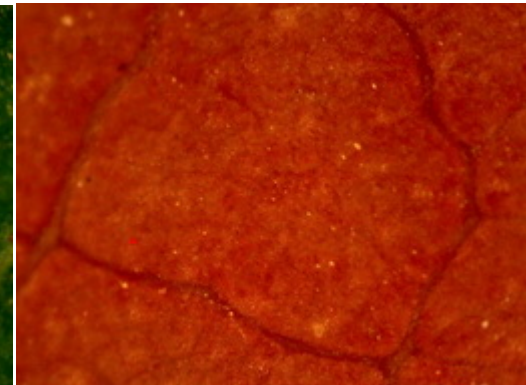
Mature leaf



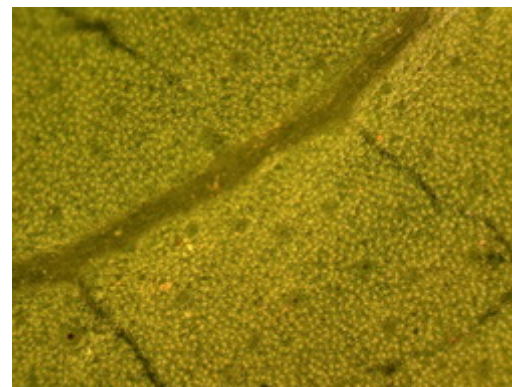
Young leaf



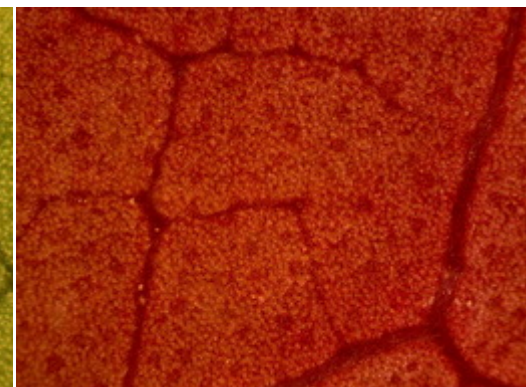
Adaxial surface



Adaxial surface



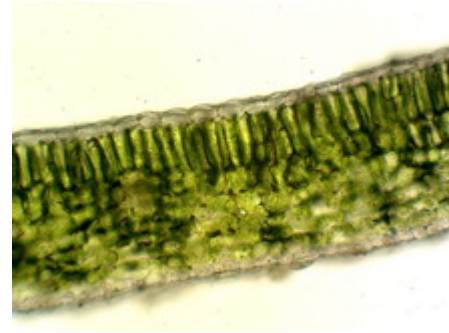
Abaxial surface



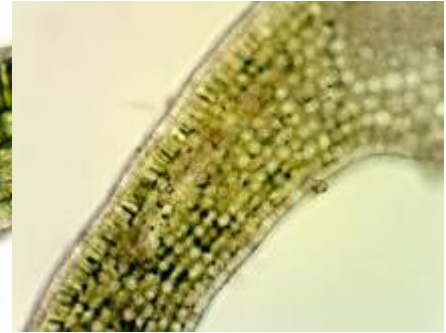
Abaxial surface

	Cuticle (mm)	Epidermi s (mm)	Lamina (mm)
Mature leaf	0.0081	0.022	0.27
Young leaf	0.0052	0.019	0.20

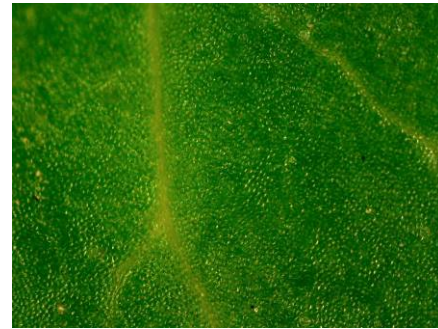
Forsythia suspensa (Thunb.) vahl
Oleaceae



Mature leaf



Young leaf



Adaxial surface



Adaxial surface



Abaxial surface



Abaxial surface

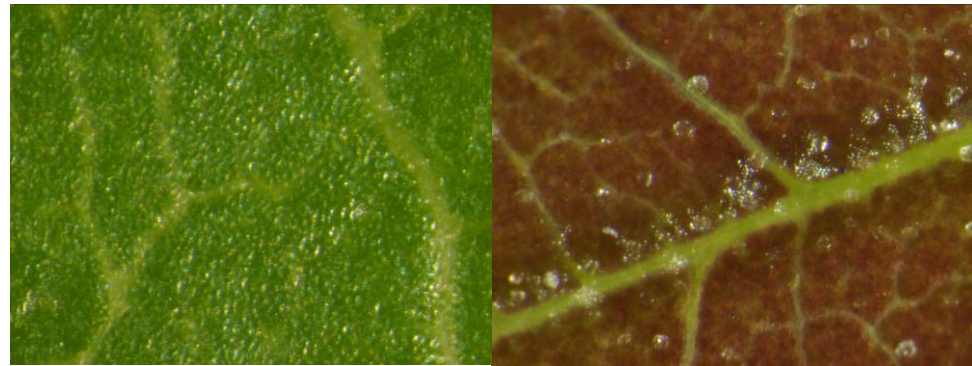
	Cuticle (mm)	Epidermis (mm)	Lamina (mm)
Mature leaf	0.0087	0.028	0.29
Young leaf	0.0063	0.023	0.20

Fraxinus hupehensis Ch'u, Shang, et Su
Oleaceae



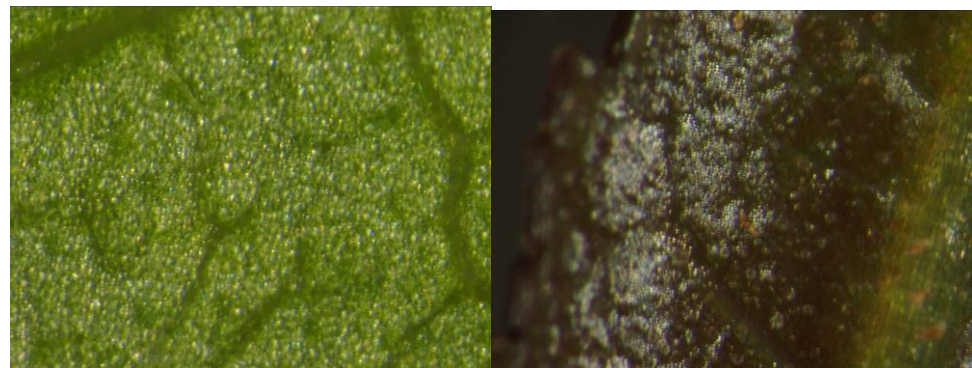
Mature leaf

Young leaf



Adaxial surface

Adaxial surface

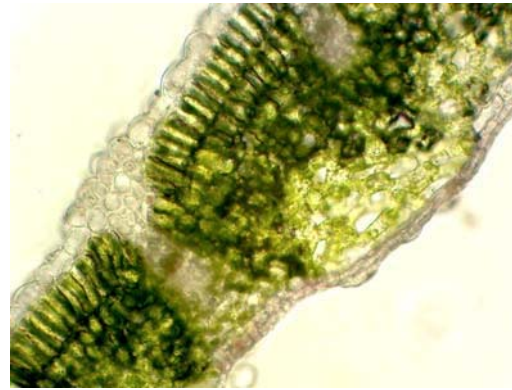


Abaxial surface

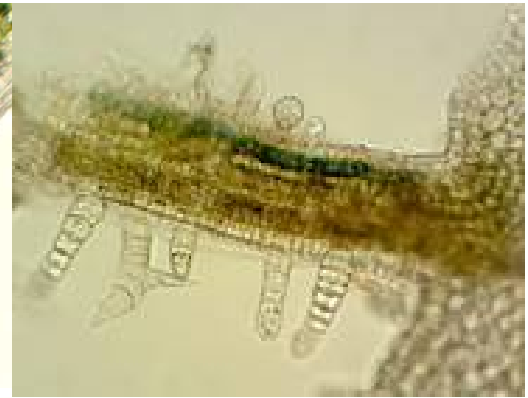
Abaxial surface

	Cuticle (mm)	Epidermis (mm)	Lamina (mm)
Mature leaf	0.0057	0.014	0.25
Young leaf	0.0018	0.011	0.15

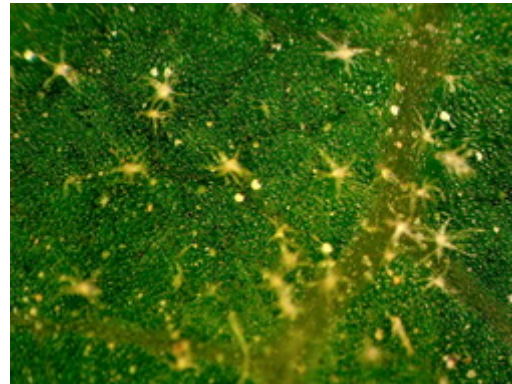
Paulownia fortunei (Seem.) Hemsi
Scrophulariaceae



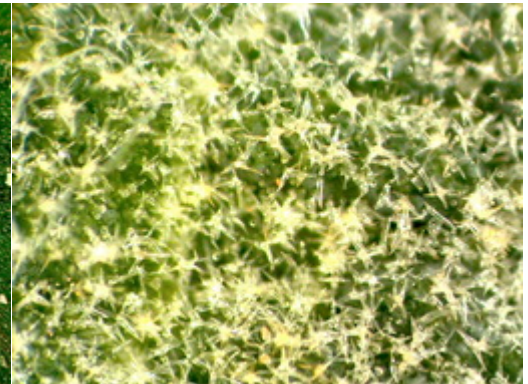
Mature leaf



Young leaf



Adaxial surface



Adaxial surface



Abaxial surface

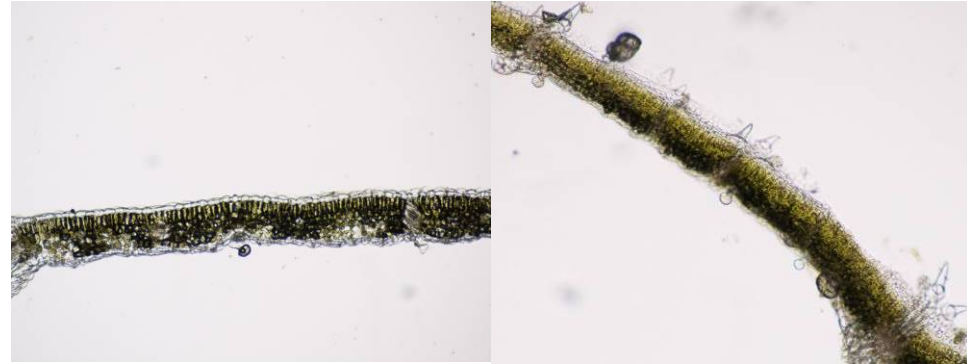


Abaxial surface

	Cuticle (mm)	Epidermis (mm)	Lamina (mm)
Mature leaf	0.0038	0.020	0.29
Young leaf	0.0028	0.019	0.18

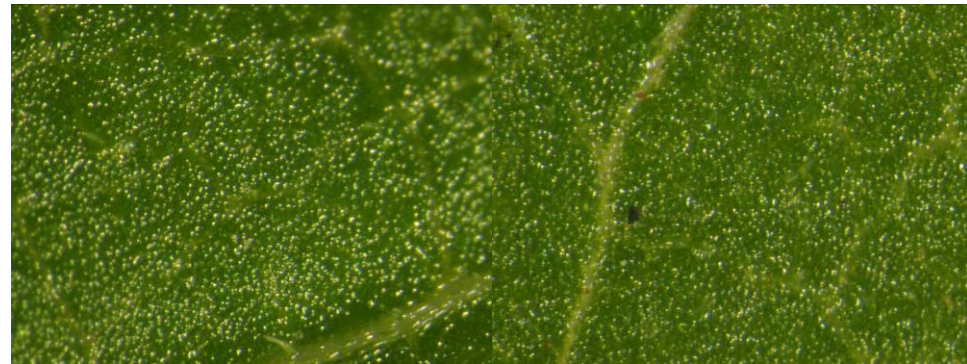
**Vitex negundo Linn. var. cannabifolia
(Sieb. et Zucc.) Hand.-Mazz**

Verbenaceae



Mature leaf

Young leaf



Adaxial surface

Adaxial surface

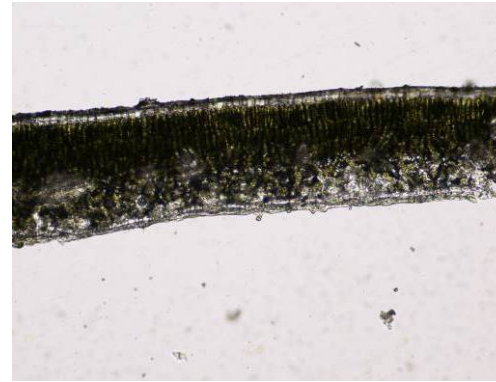


Abaxial surface

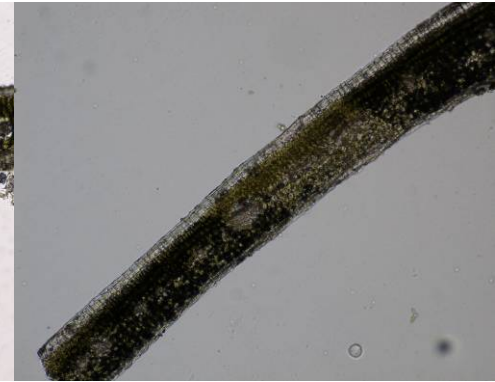
Abaxial surface

	Cuticle (mm)	Epidermis (mm)	Lamina (mm)
Mature leaf	0.0019	0.016	0.12
Young leaf	0.0014	0.016	0.10

**Gardenia jasminoides Ellis var.
jasminoides
Rubiaceae**



Mature leaf



Young leaf



Adaxial surface



Adaxial surface



Abaxial surface



Abaxial surface

	Cuticle (mm)	Epidermis (mm)	Lamina (mm)
Mature leaf	0.0056	0.025	0.22
Young leaf	0.0049	0.025	0.16

Nerium indicum Mill
Apocynaceae



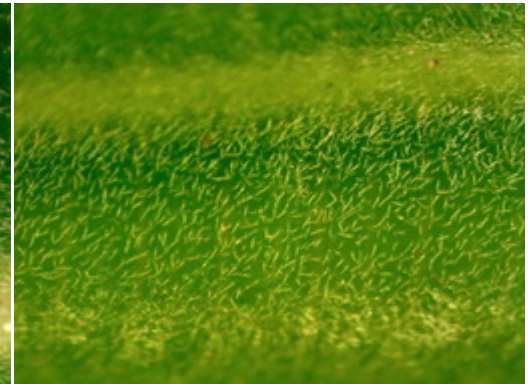
Mature leaf



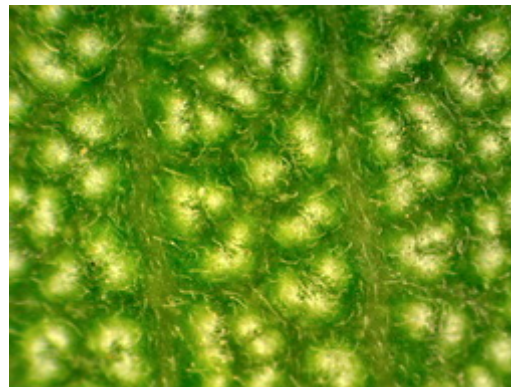
Young leaf



Adaxial surface



Adaxial surface



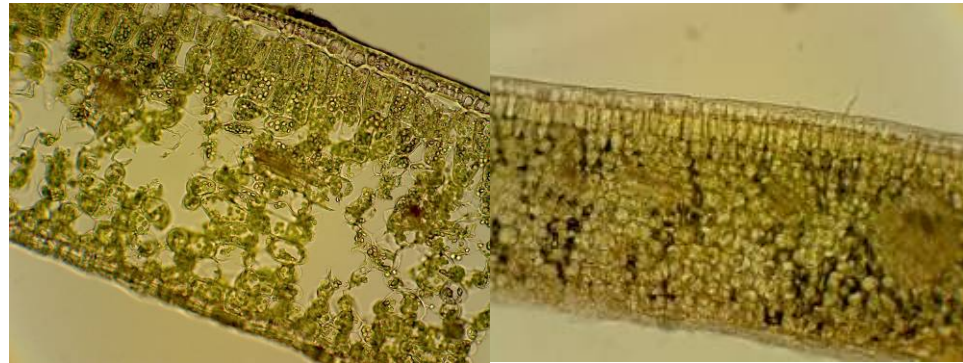
Abaxial surface



Abaxial surface

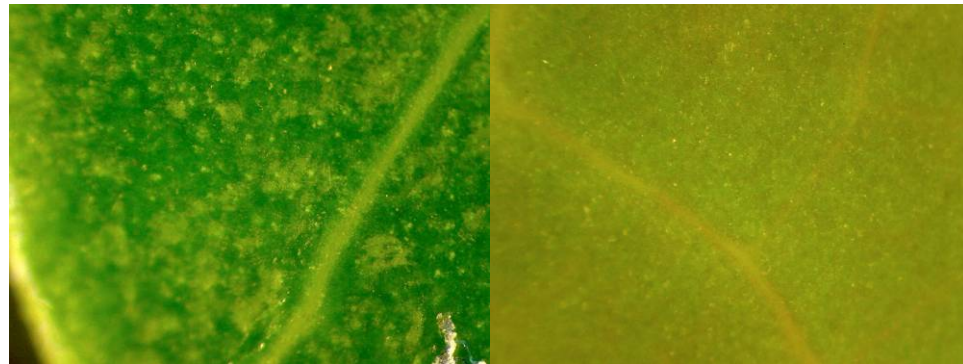
	Cuticle (mm)	Epidermis (mm)	Lamina (mm)
Mature leaf	0.013	0.054	0.42
Young leaf	0.021	0.074	0.48

Camellia japonica Linn.
Theaceae



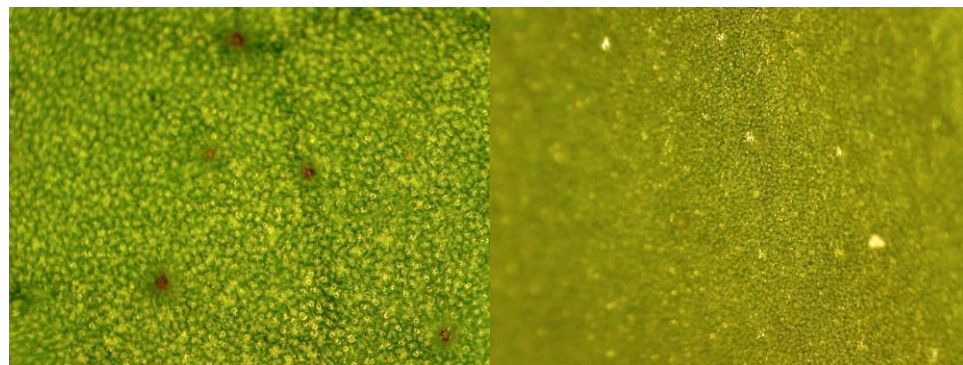
Mature leaf

Young leaf



Adaxial surface

Adaxial surface



Abaxial surface

Abaxial surface

	Cuticle (mm)	Epidermis (mm)	Lamina (mm)
Mature leaf	0.0058	0.032	0.46
Young leaf	0.0055	0.023	0.29

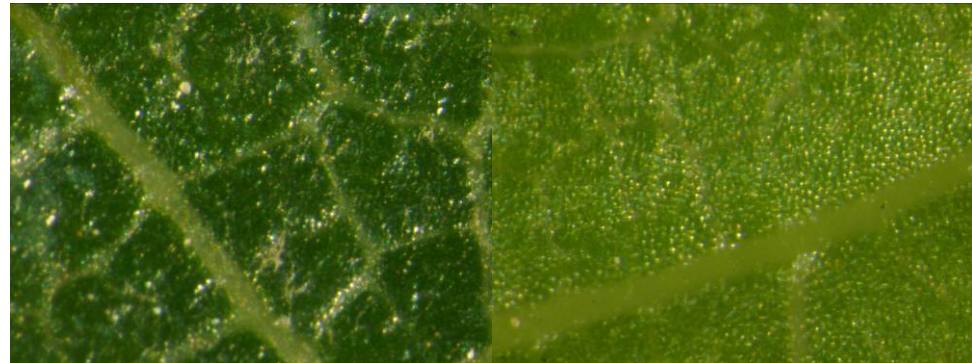
Sinojackia xylocarpa Hu
Styracaceae



Mature leaf

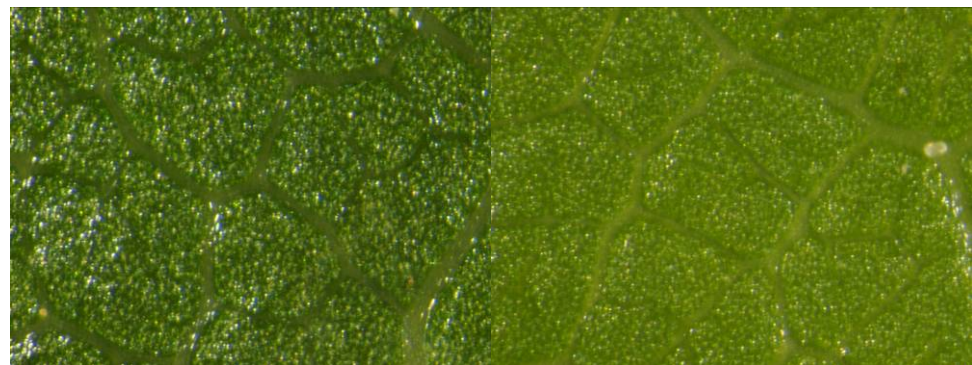


Young leaf



Adaxial surface

Adaxial surface



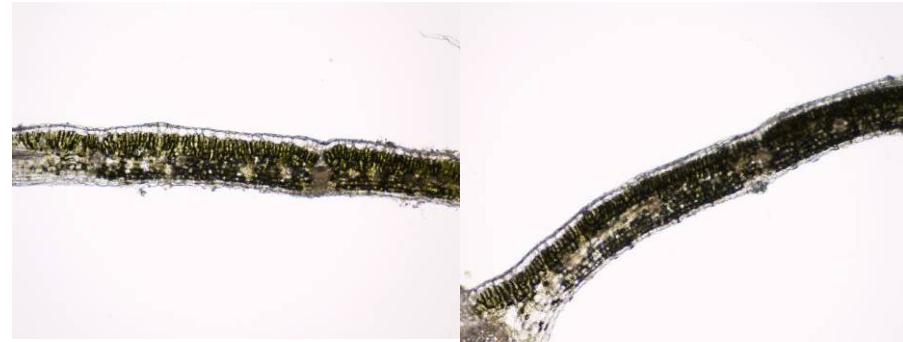
Abaxial surface

Abaxial surface

	Cuticle (mm)	Epidermis (mm)	Lamina (mm)
Mature leaf	0.0019	0.015	0.11
Young leaf	0.0018	0.015	0.10

Rhododendron pulchrum Sweet

Ericaceae



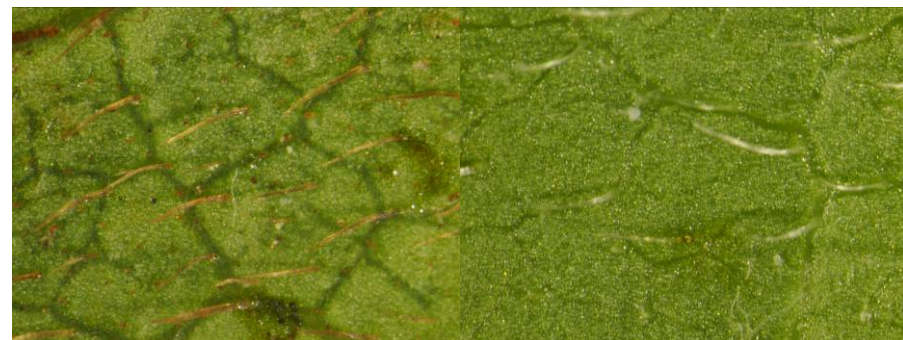
Mature leaf

Young leaf



Adaxial surface

Adaxial surface

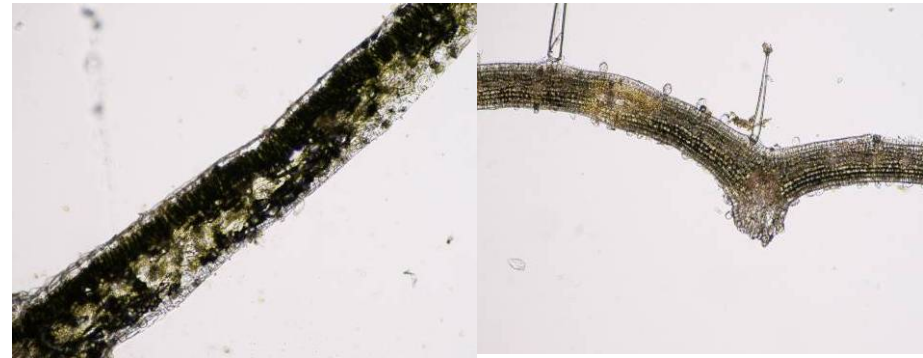


Abaxial surface

Abaxial surface

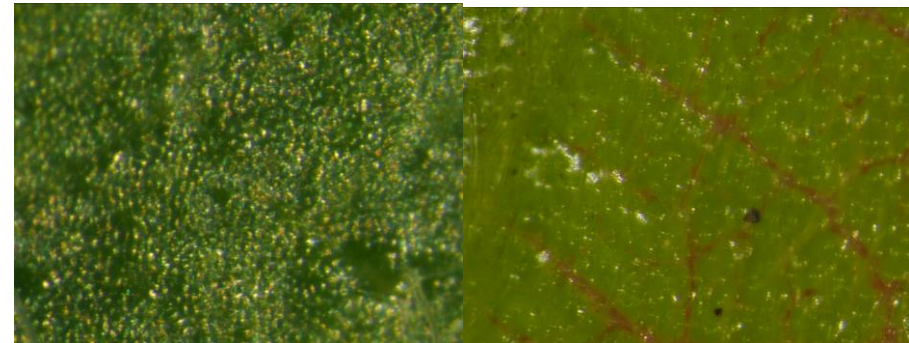
	Cuticle (mm)	Epidermis (mm)	Lamina (mm)
Mature leaf	0.0036	0.025	0.16
Young leaf	0.0020	0.015	0.12

Camptotheca acuminata Decne.
Cornaceae



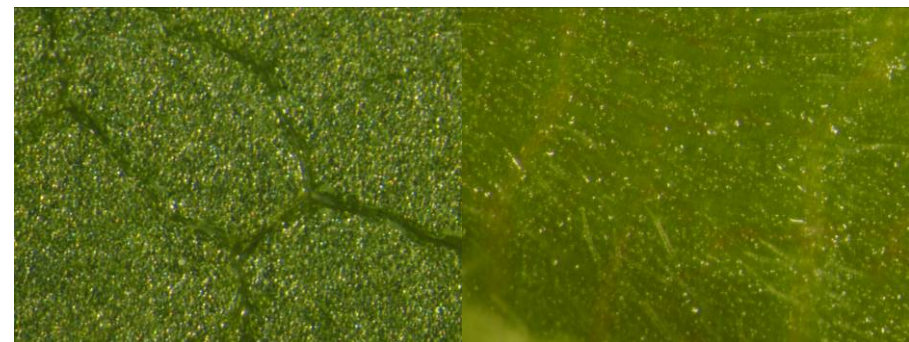
Mature leaf

Young leaf



Adaxial surface

Adaxial surface

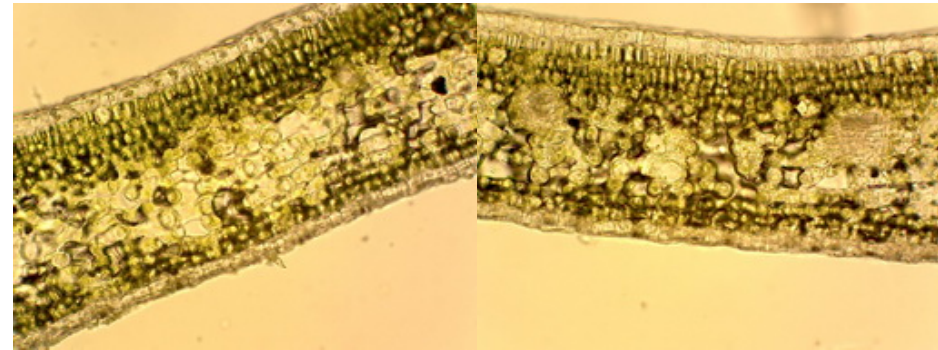


Abaxial surface

Abaxial surface

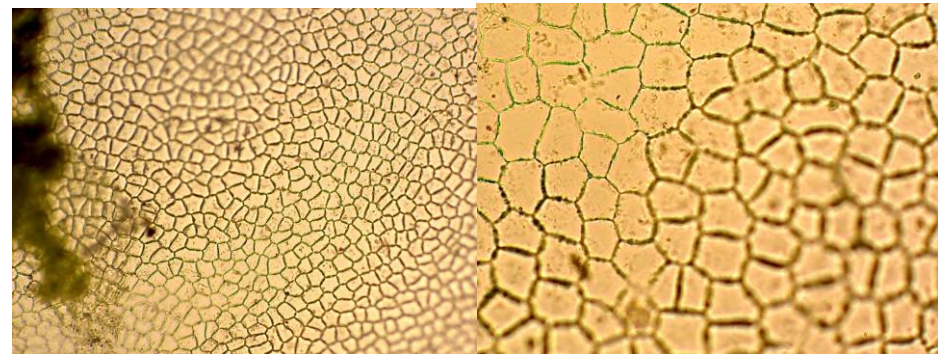
	Cuticle (mm)	Epidermis (mm)	Lamina (mm)
Mature leaf	0.0029	0.025	0.20
Young leaf	0.0009	0.016	0.12

Euonymus japonicus Thunb.
Celastraceae



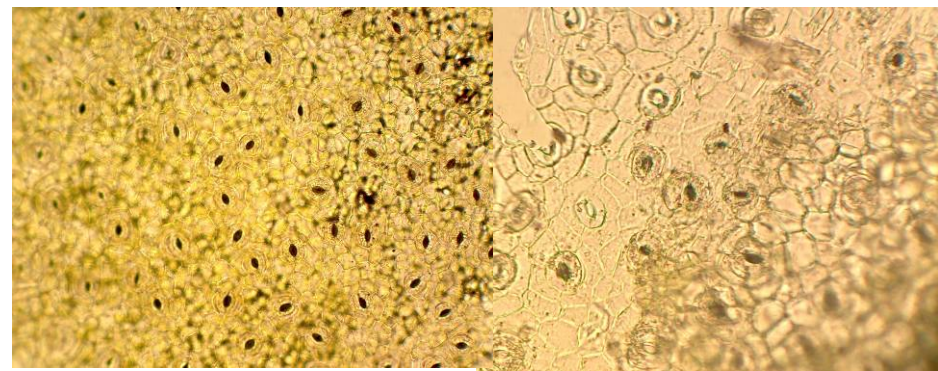
Mature leaf

• Young leaf



• Adaxial surface

• Adaxial surface

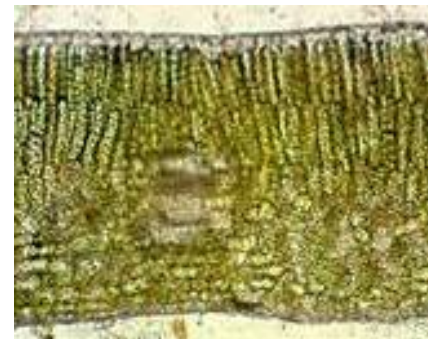


• Abaxial surface

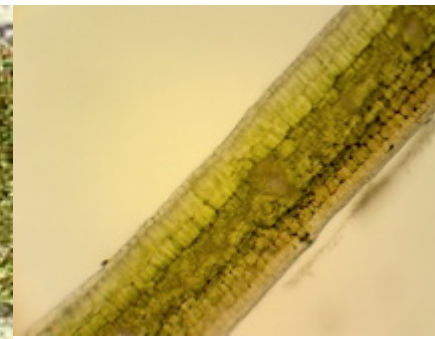
• Abaxial surface

	Cuticle (mm)	Epidermis (mm)	Lamina (mm)
Mature leaf	0.0055	0.025	0.27
Young leaf	0.0066	0.024	0.25

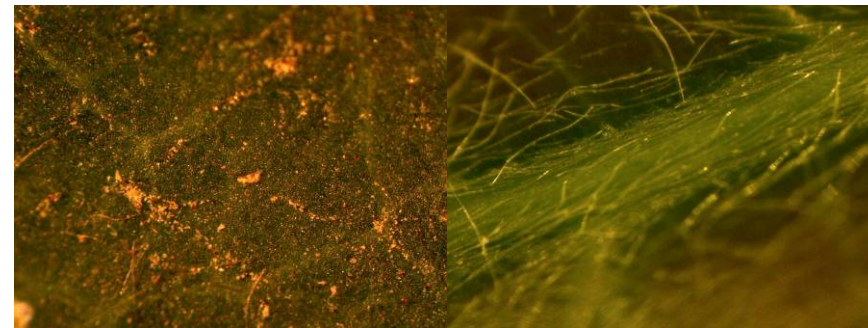
Elaeocarpus decipiens Hemsl.
Elaeocarpaceae



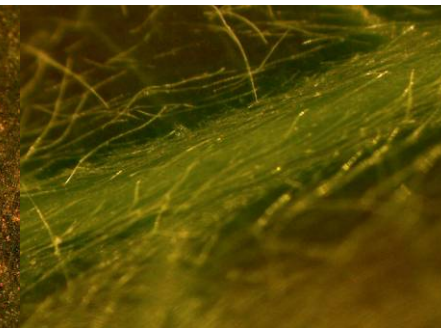
Mature leaf



Young leaf



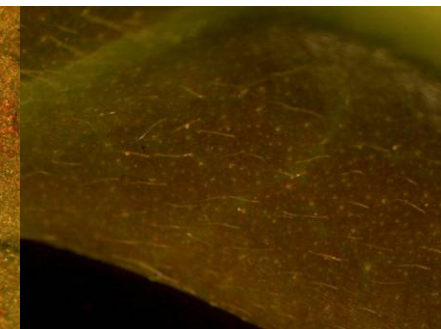
Adaxial surface



Adaxial surface



Abaxial surface



Abaxial surface

	Cuticle (mm)	Epidermis (mm)	Lamina (mm)
Mature leaf	0.0028	0.017	0.26
Young leaf	0.0010	0.010	0.16

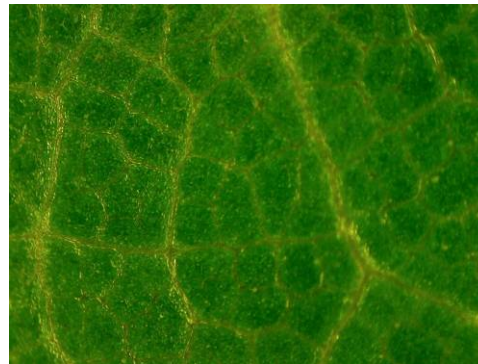
Acer buergerianum Miq.
Aceraceae



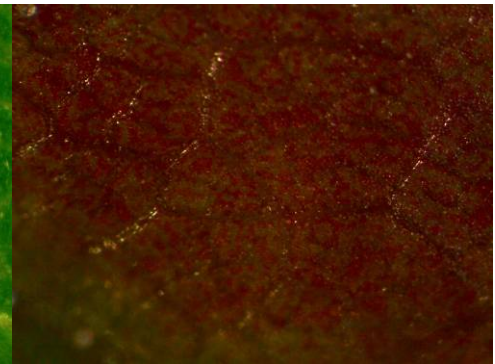
Mature leaf



Young leaf



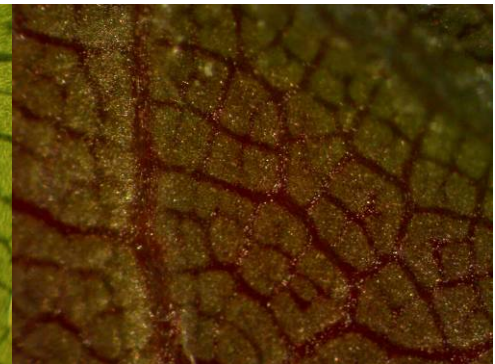
Adaxial surface



Adaxial surface



Abaxial surface



Abaxial surface

	Cuticle (mm)	Epidermis (mm)	Lamina (mm)
Mature leaf	0.0050	0.018	0.16
Young leaf	0.0050	0.014	0.11

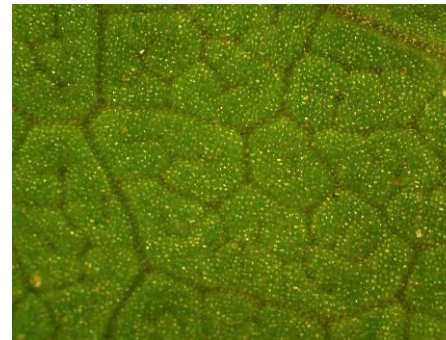
Acer palmatum Thunb.
Aceraceae



Mature leaf



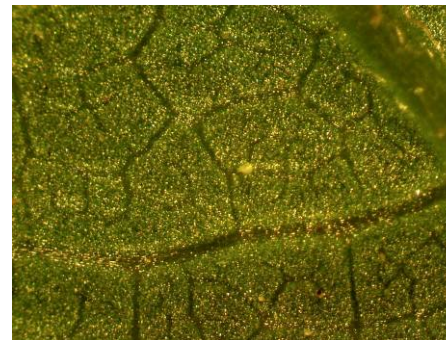
Young leaf



Adaxial surface



Adaxial surface



Abaxial surface



Abaxial surface

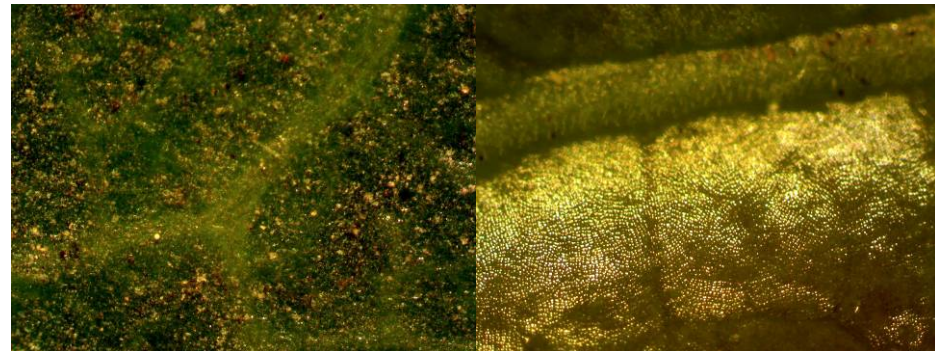
	Cuticle (mm)	Epidermis (mm)	Lamina (mm)
Mature leaf	0.0053	0.022	0.18
Young leaf	0.0035	0.019	0.089

Xylosma japonicum (Walp.) A. Gray
Flacourtiaceae



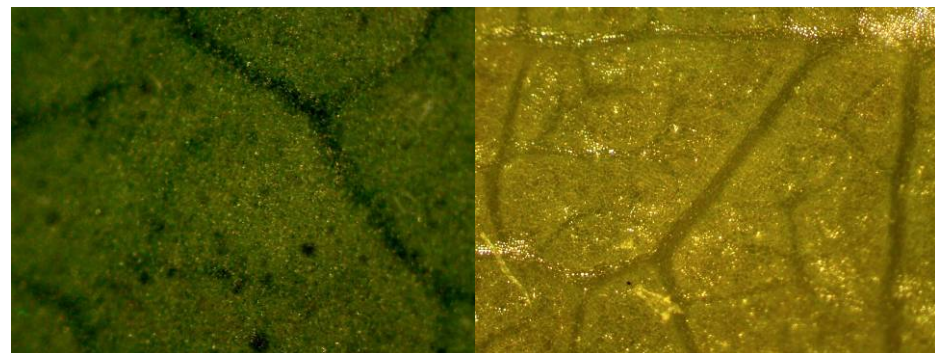
Mature leaf

Young leaf



Adaxial surface

Adaxial surface



Abaxial surface

Abaxial surface

	Cuticle (mm)	Epidermis (mm)	Lamina (mm)
Mature leaf	0.0055	0.022	0.20
Young leaf	0.0025	0.020	0.15

Bischofia polycarpa (Levl.) Airy Shaw

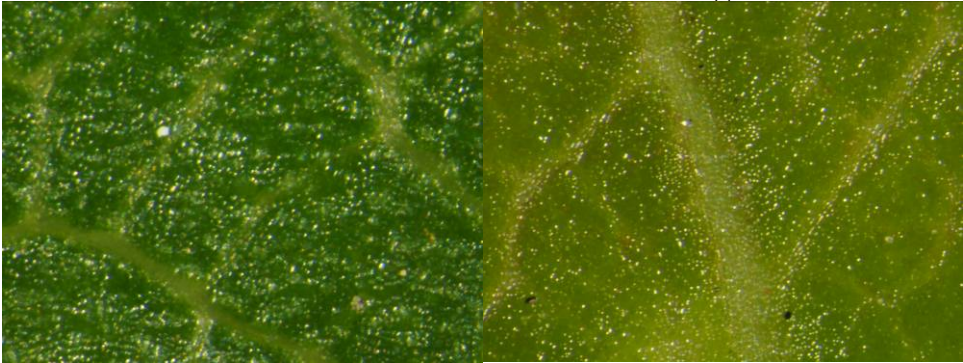
Euphorbiaceae



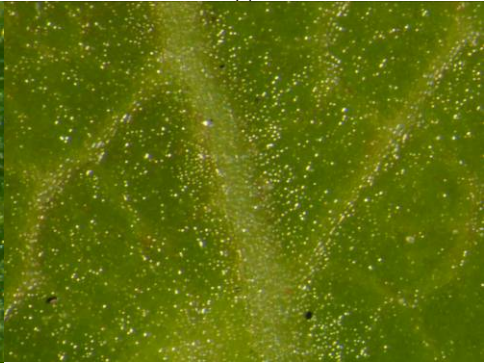
Mature leaf



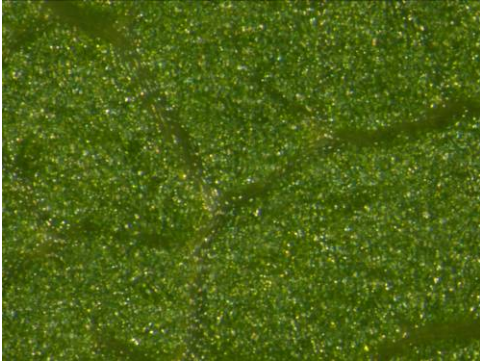
Young leaf



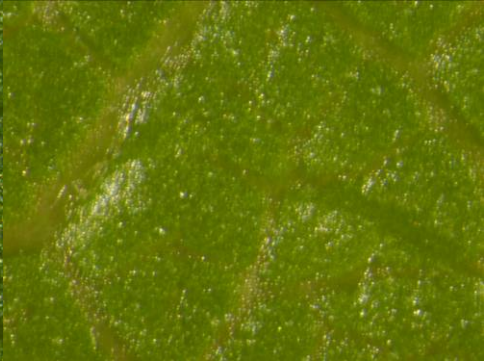
Adaxial surface



Adaxial surface



Abaxial surface

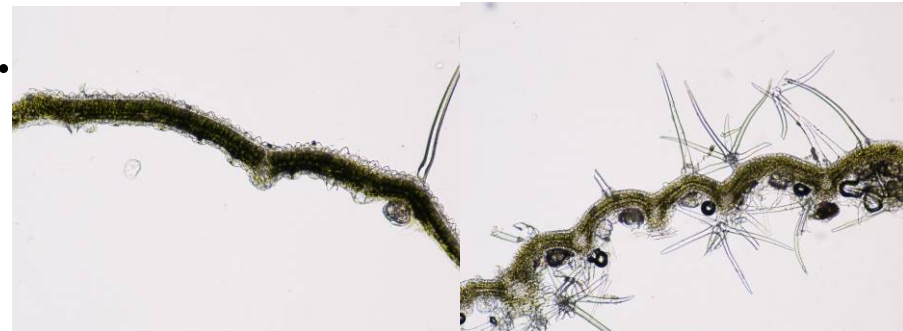


Abaxial surface

	Cuticle (mm)	Epidermis (mm)	Lamina (mm)
Mature leaf	0.0027	0.021	0.27
Young leaf	0.0025	0.015	0.14

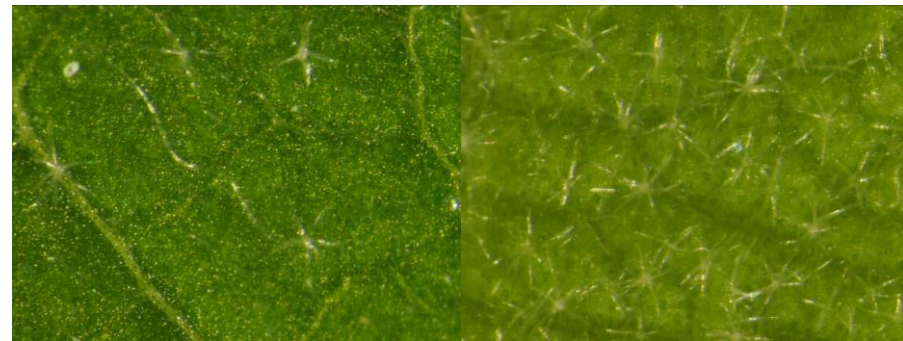
Mallotus apelta (Lour.) Muell.-Arg.

Euphorbiaceae



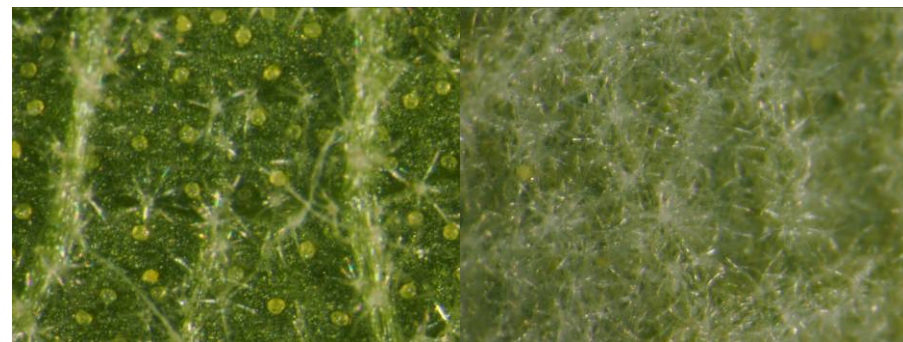
Mature leaf

Young leaf



Adaxial surface

Adaxial surface



Abaxial surface

Abaxial surface

	Cuticle (mm)	Epidermis (mm)	Lamina (mm)
Mature leaf	0.0015	0.015	0.06
Young leaf	0.0014	0.012	0.06

Excoecaria cochinchinensis Lour
Euphorbiaceae



Mature leaf



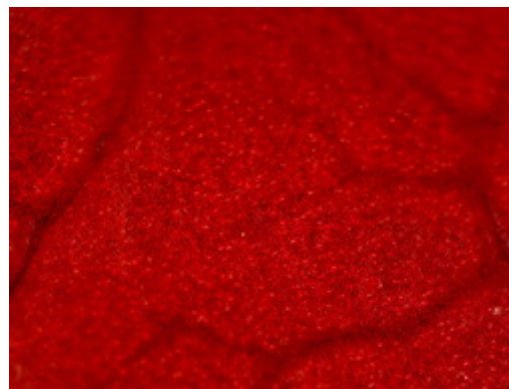
Young leaf



Adaxial surface



Adaxial surface



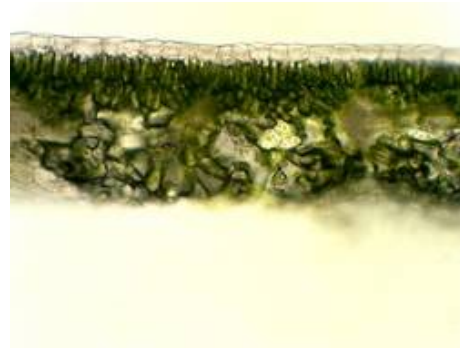
Abaxial surface



Abaxial surface

	Cuticle (mm)	Epidermis (mm)	Lamina (mm)
Mature leaf	0.0023	0.019	0.23
Young leaf	0.0070	0.020	0.28

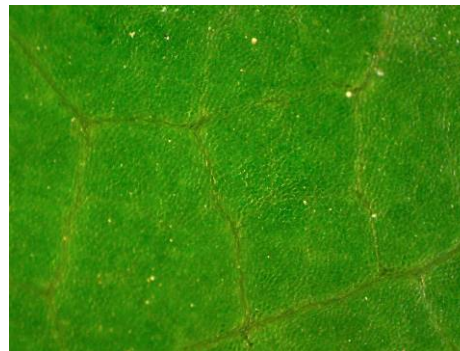
Cercis chinensis Bunge
Fabaceae



Mature leaf



Young leaf



Adaxial surface



Adaxial surface



Abaxial surface



Abaxial surface

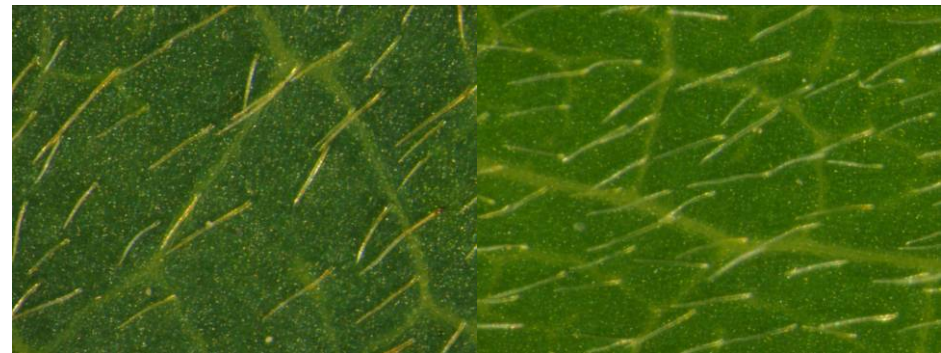
	Cuticle (mm)	Epidermis (mm)	Lamina (mm)
Mature leaf	0.0070	0.031	0.22
Young leaf	0.0043	0.022	0.20

Sophora japonica Linn.
Fabaceae



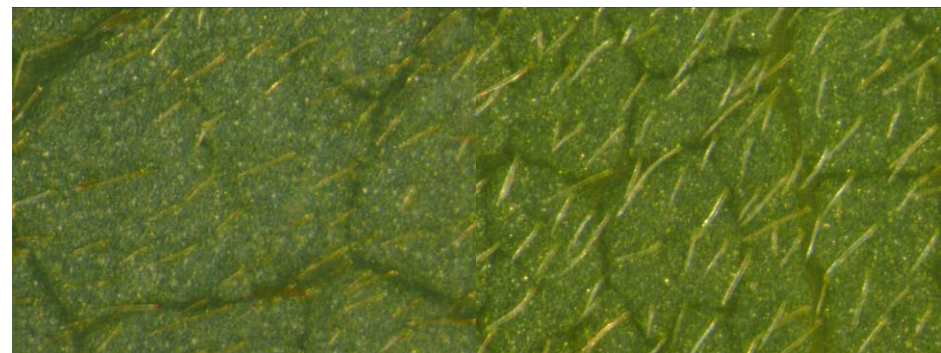
Mature leaf

Young leaf



Adaxial surface

Adaxial surface

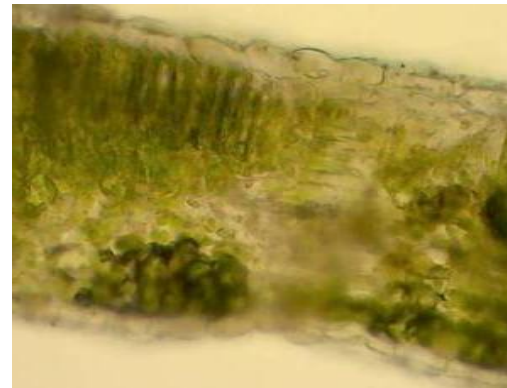


Abaxial surface

Abaxial surface

	Cuticle (mm)	Epidermis (mm)	Lamina (mm)
Mature leaf	0.0012	0.014	0.20
Young leaf	0.0010	0.012	0.12

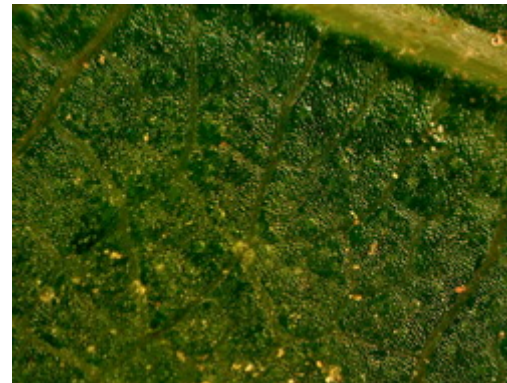
***Pterocarya stenoptera* C. DC.**
Juglandaceae



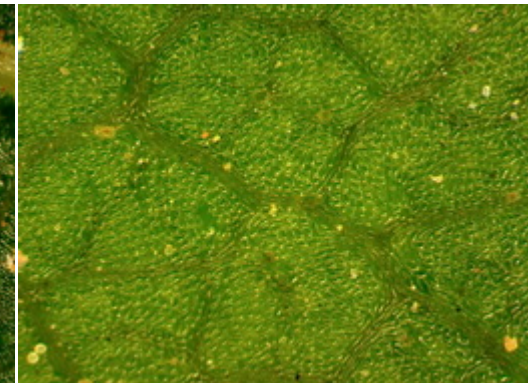
Mature leaf



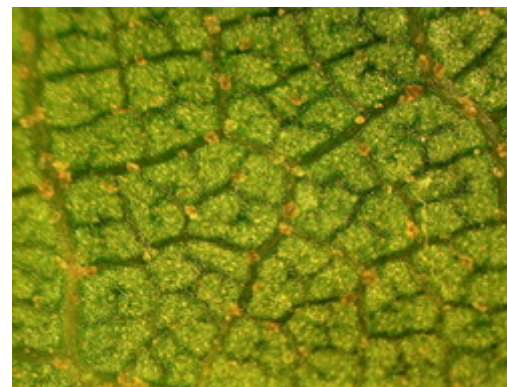
Young leaf



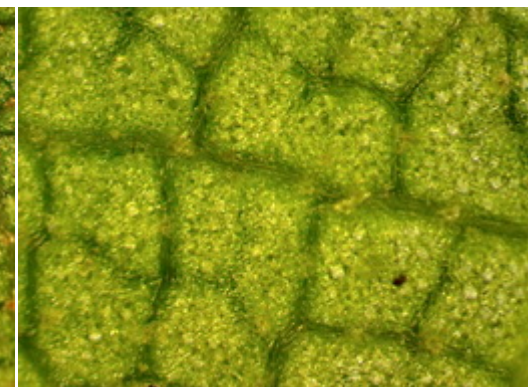
Adaxial surface



Adaxial surface



Abaxial surface

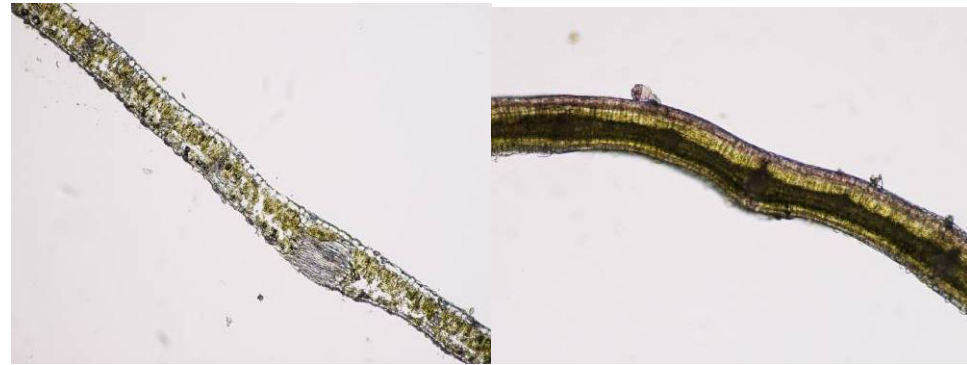


Abaxial surface

	Cuticle (mm)	Epidermis (mm)	Lamina (mm)
Mature leaf	0.0043	0.024	0.29
Young leaf	0.0025	0.018	0.24

Quercus aliena Blume

Fagaceae



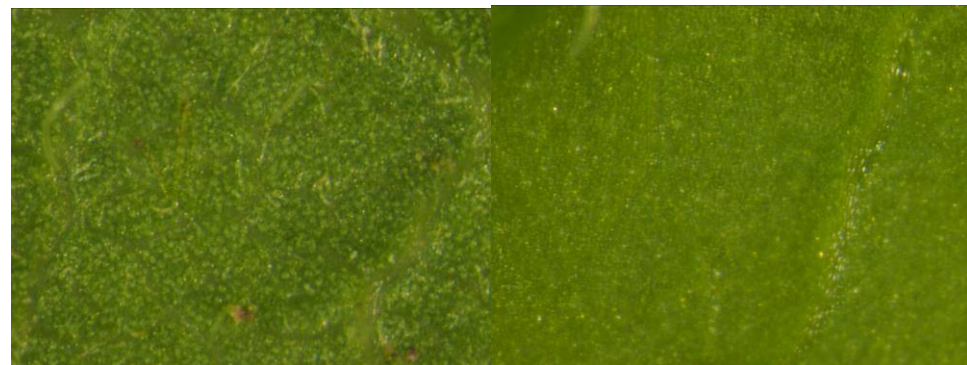
Mature leaf

Young leaf



Adaxial surface

Adaxial surface

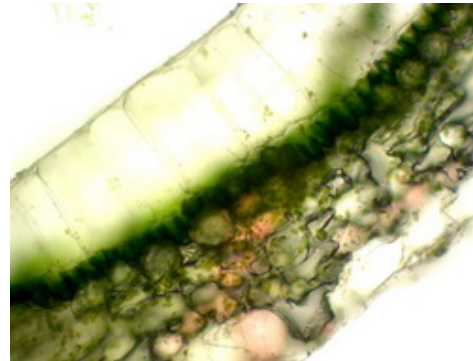


Abaxial surface

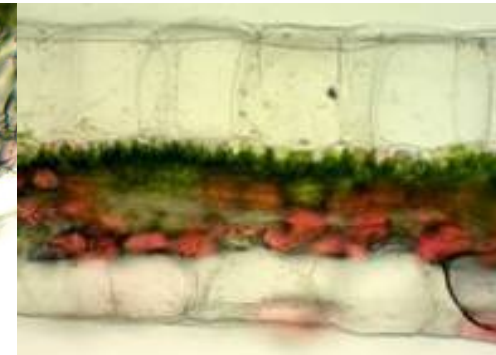
Abaxial surface

	Cuticle (mm)	Epidermis (mm)	Lamina (mm)
Mature leaf	0.0030	0.014	0.09
Young leaf	0.0015	0.013	0.08

Begonia maculata Raddi
Begoniaceae



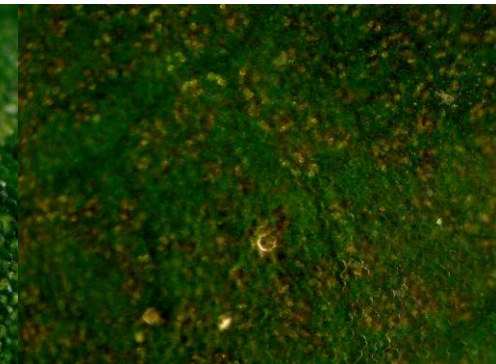
Mature leaf



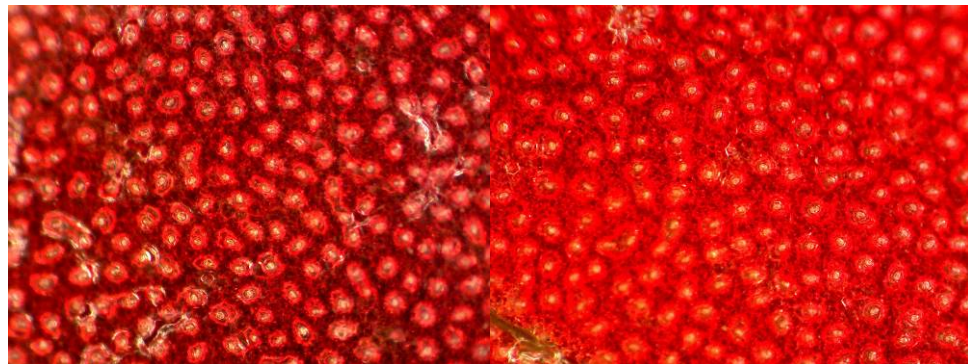
Young leaf



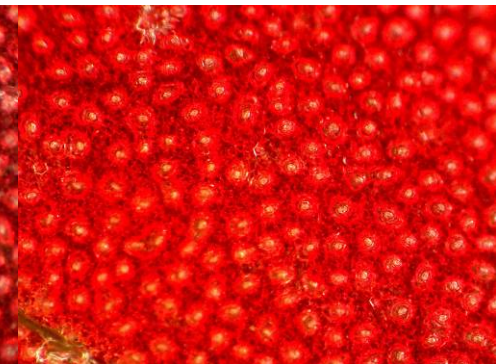
Adaxial surface



Adaxial surface



Abaxial surface



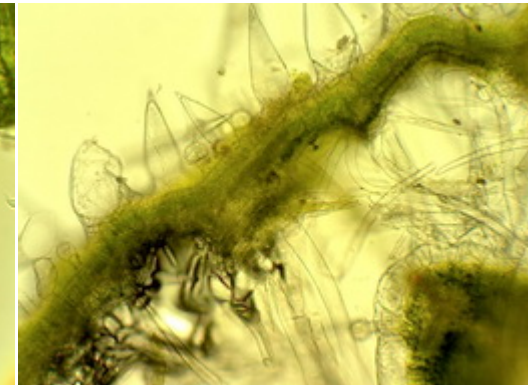
Abaxial surface

	Cuticle (mm)	Epidermis (mm)	Lamina (mm)
Mature leaf	0.0047	0.18	0.50
Young leaf	0.0011	0.17	0.42

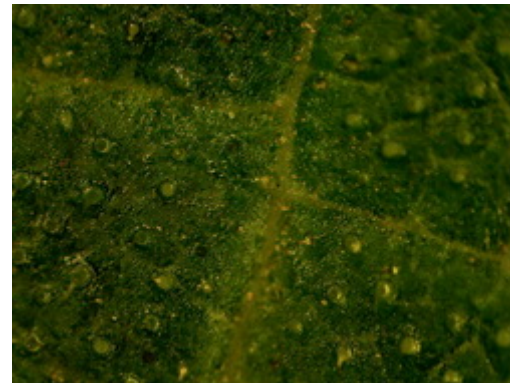
***Broussonetia papyrifera* (L.) Vent.
Moraceae**



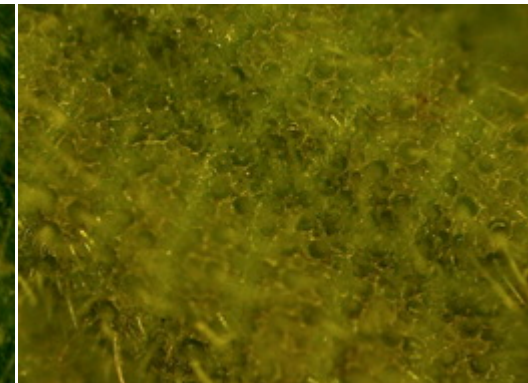
Mature leaf



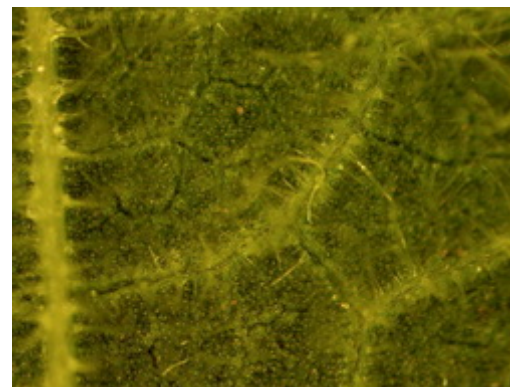
Young leaf



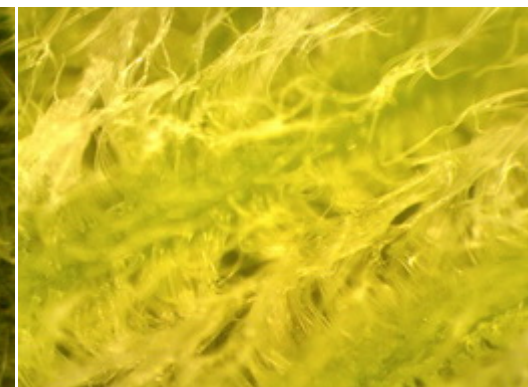
Adaxial surface



Adaxial surface



Abaxial surface



Abaxial surface

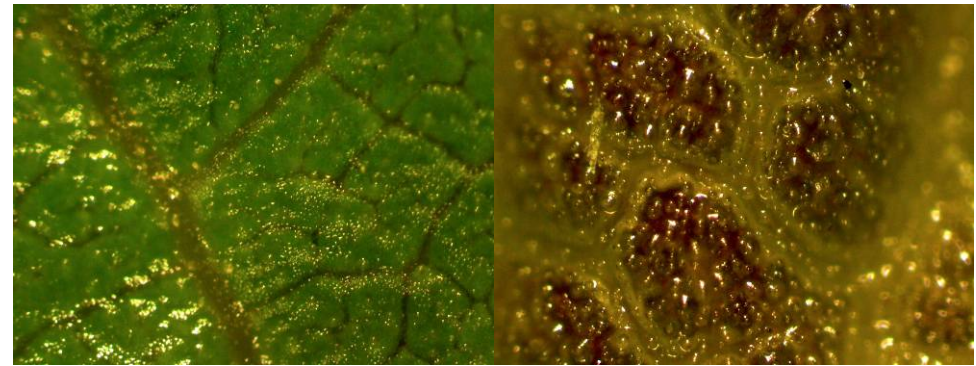
	Cuticle (mm)	Epidermis (mm)	Lamina (mm)
Mature leaf	0.0029	0.030	0.18
Young leaf	0.0026	0.016	0.091

Morus alba L.
Moraceae



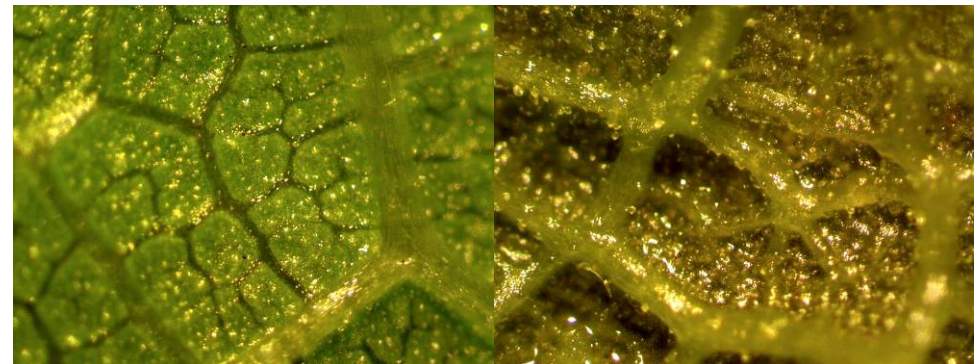
Mature leaf

Young leaf



Adaxial surface

Adaxial surface



Abaxial surface

Abaxial surface

	Cuticle (mm)	Epidermis (mm)	Lamina (mm)
Mature leaf	0.0045	0.020	0.18
Young leaf	0.0025	0.013	0.15

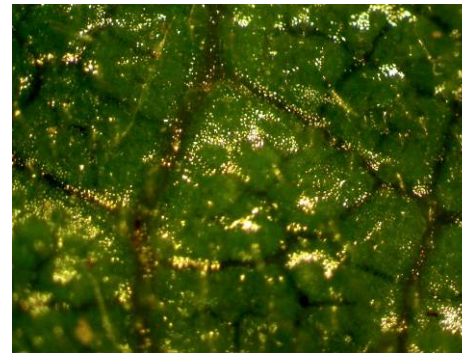
Ficus carica Linn.
Moraceae



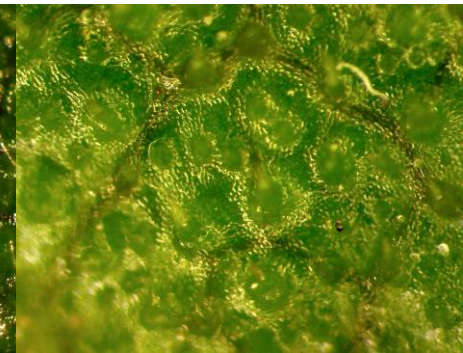
Mature leaf



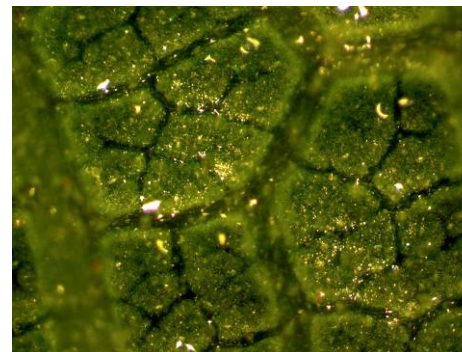
Young leaf



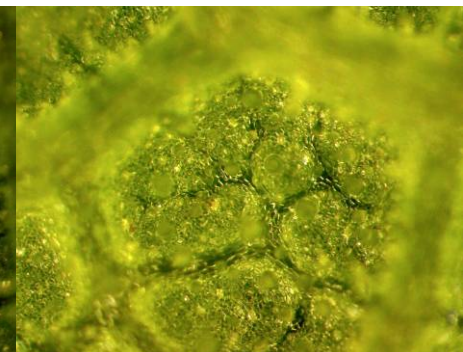
Adaxial surface



Adaxial surface



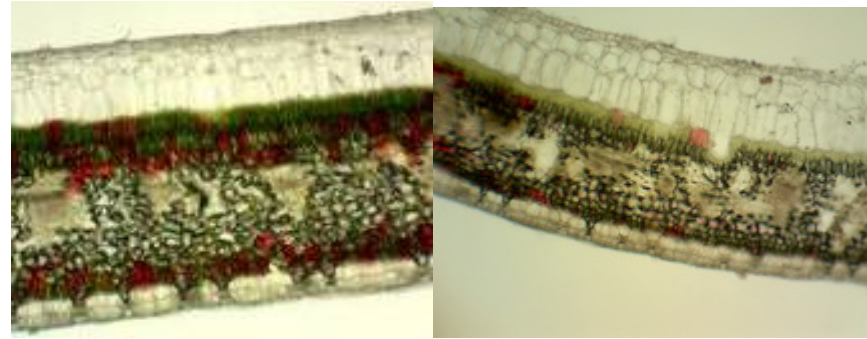
Abaxial surface



Abaxial surface

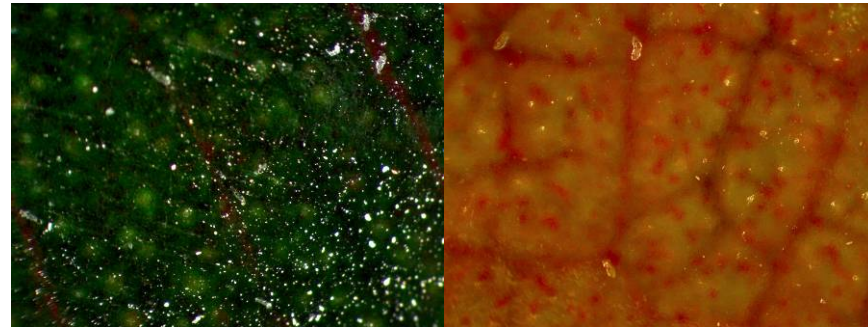
	Cuticle (mm)	Epidermis (mm)	Lamina (mm)
Mature leaf	0.0066	0.023	0.16
Young leaf	0.0047	0.016	0.11

Ficus elastica Roxb.
Moraceae



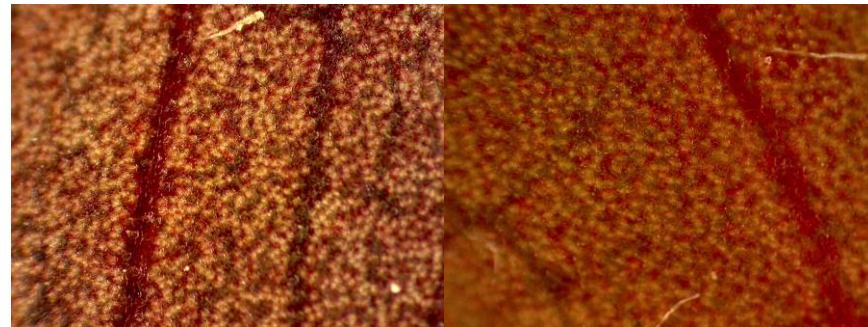
Mature leaf

Young leaf



Adaxial surface

Adaxial surface

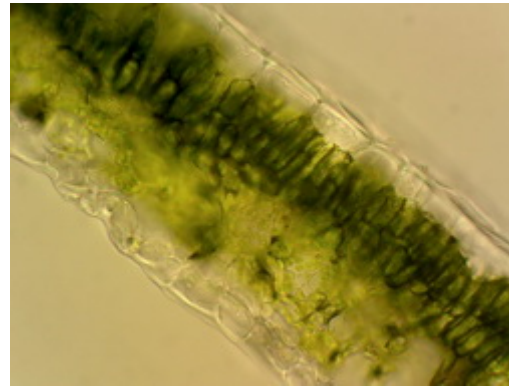


Abaxial surface

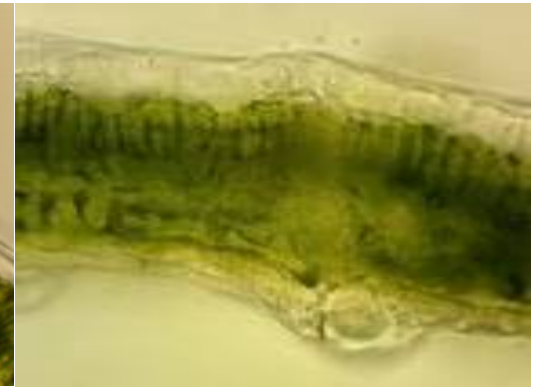
Abaxial surface

	Cuticle (mm)	Epidermis (mm)	Lamina (mm)
Mature leaf	0.0070	0.22	0.68
Young leaf	0.0023	0.23	0.68

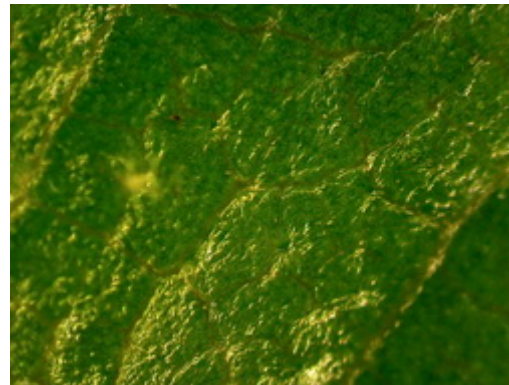
Ulmus parvifolia Jacq.
Ulmaceae



Mature leaf



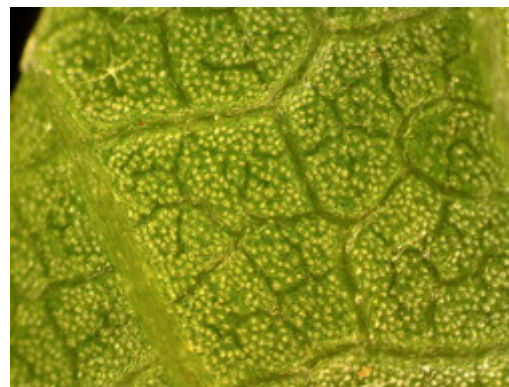
Young leaf



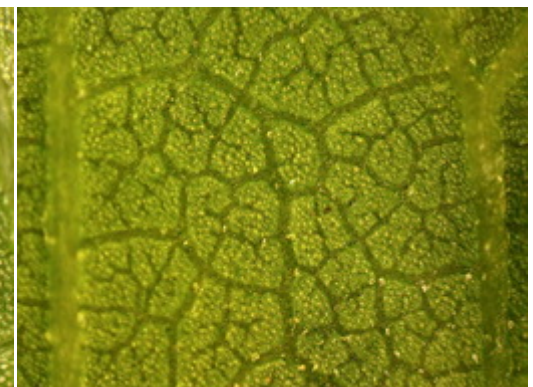
Adaxial surface



Adaxial surface



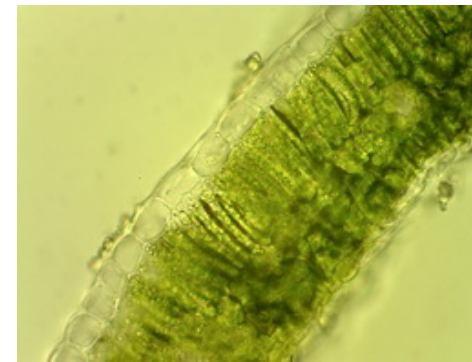
Abaxial surface



Abaxial surface

	Cuticle (mm)	Epidermis (mm)	Lamina (mm)
Mature leaf	0.0054	0.022	0.21
Young leaf	0.0053	0.020	0.16

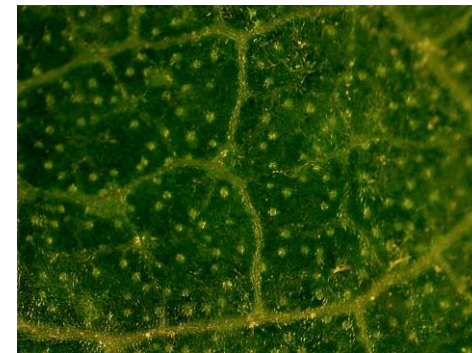
Celtis sinensis Pers.
Ulmaceae



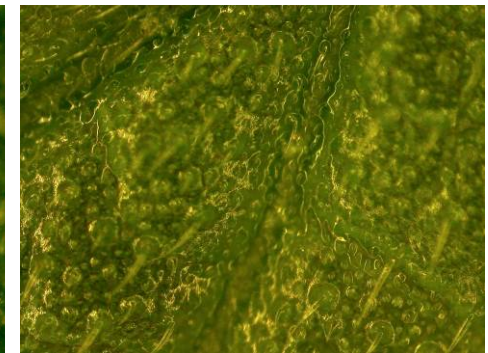
Mature leaf



Young leaf



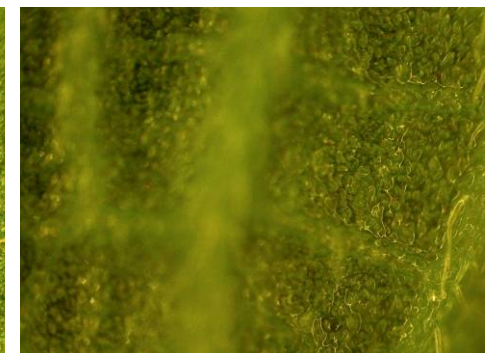
Adaxial surface



Adaxial surface



Abaxial surface

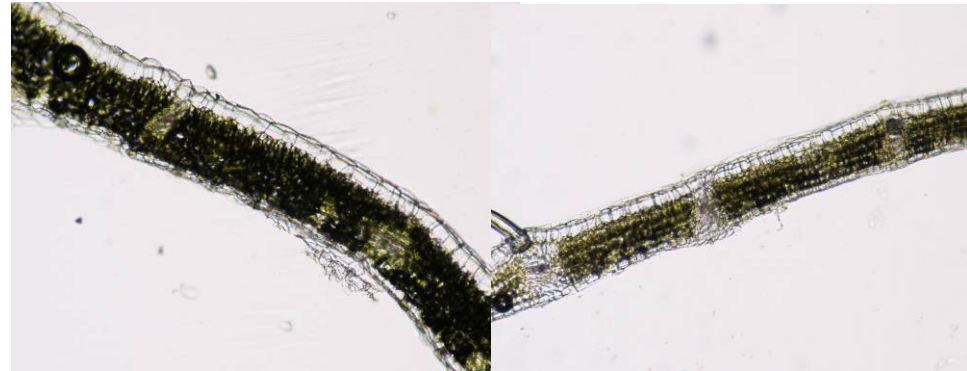


Abaxial surface

	Cuticle (mm)	Epidermis (mm)	Lamina (mm)
Mature leaf	0.0066	0.024	0.23
Young leaf	0.0047	0.023	0.20

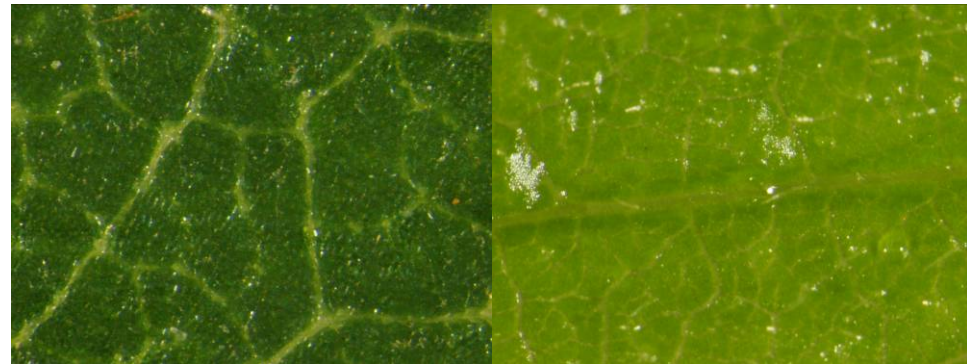
Hovenia acerba Lindl.

Rhamnaceae



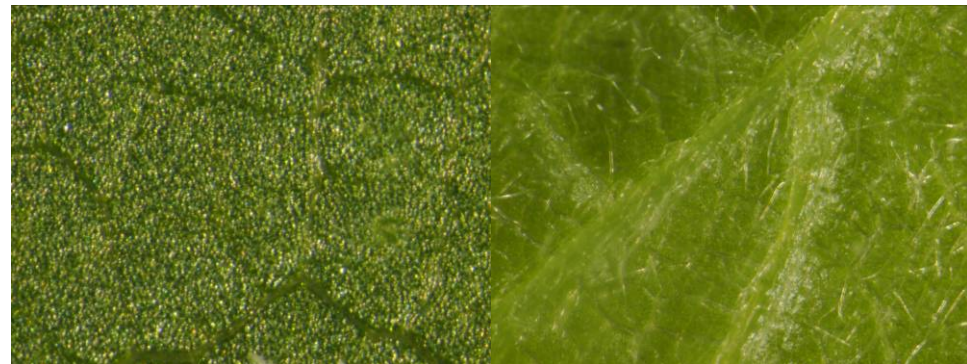
Mature leaf

Young leaf



Adaxial surface

Adaxial surface



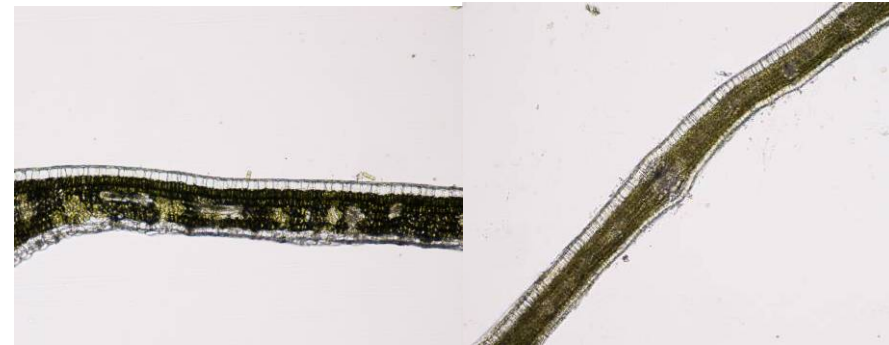
Abaxial surface

Abaxial surface

	Cuticle (mm)	Epidermis (mm)	Lamina (mm)
Mature leaf	0.0045	0.020	0.18
Young leaf	0.0025	0.013	0.15

Ziziphus jujuba Mill.

Rhamnaceae



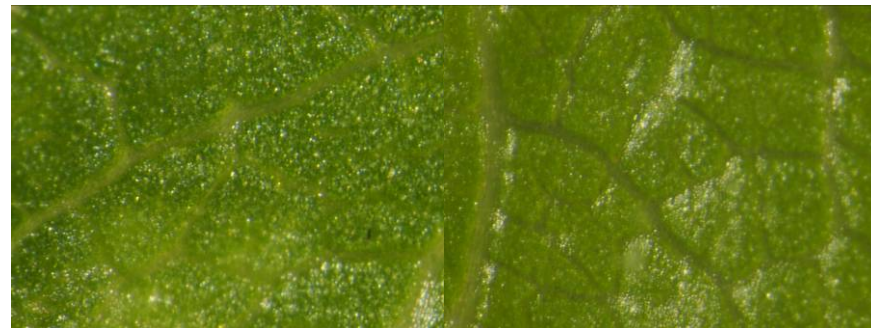
Mature leaf

Young leaf



Adaxial surface

Adaxial surface

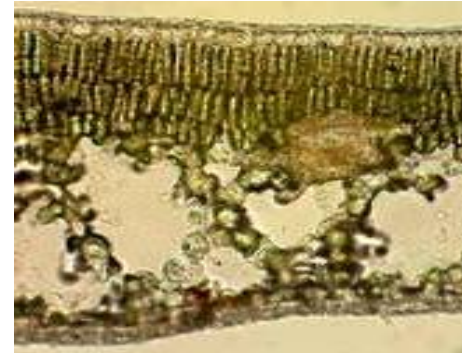


Abaxial surface

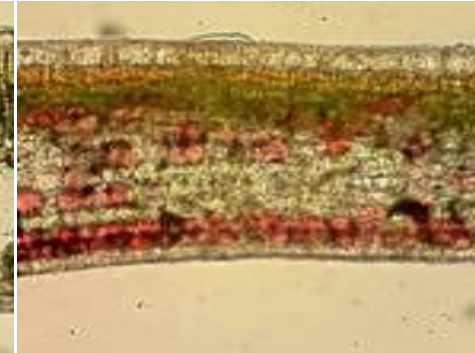
Abaxial surface

	Cuticle (mm)	Epidermis (mm)	Lamina (mm)
Mature leaf	0.0030	0.026	0.12
Young leaf	0.0025	0.021	0.11

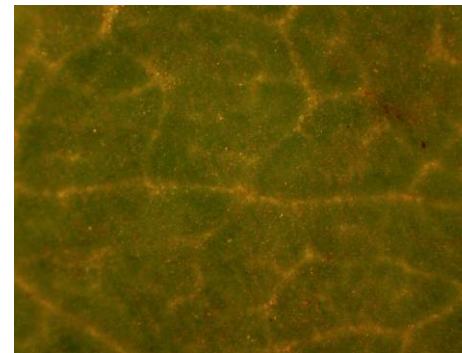
Photinia davidsoniae Rehd. et Wils.
Rosaceae



Mature leaf



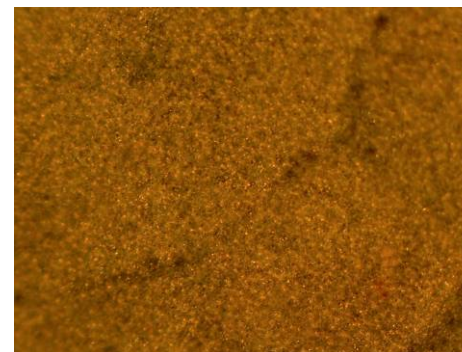
Young leaf



Adaxial surface



Adaxial surface



Abaxial surface



Abaxial surface

	Cuticle (mm)	Epidermis (mm)	Lamina (mm)
Mature leaf	0.0078	0.026	0.38
Young leaf	0.0050	0.023	0.32

Photinia serrulata Lindl.
Rosaceae



Mature leaf



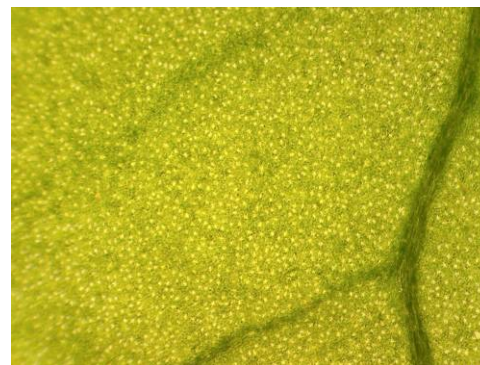
Young leaf



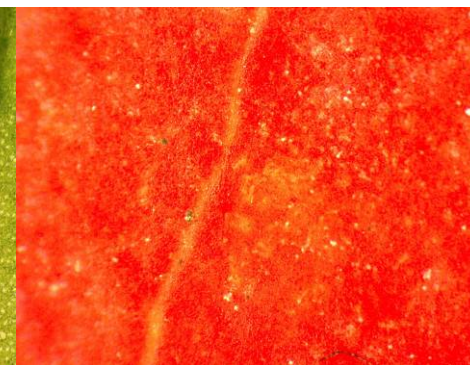
- Adaxial surface



- Adaxial surface



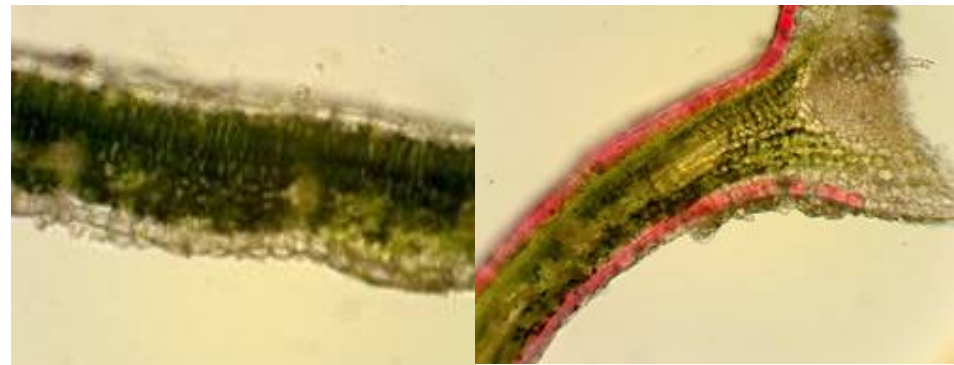
- Abaxial surface



- Abaxial surface

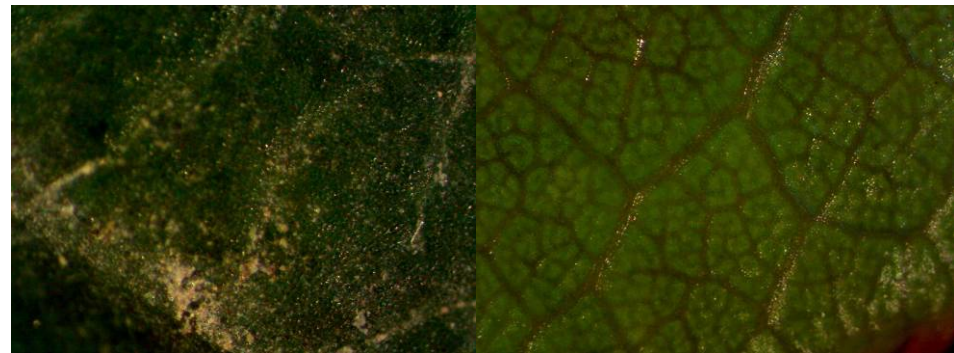
	Cuticle (mm)	Epidermis (mm)	Lamina (mm)
Mature leaf	0.0092	0.038	0.42
Young leaf	0.0039	0.027	0.27

Rosa chinensis Jacq.
Rosaceae



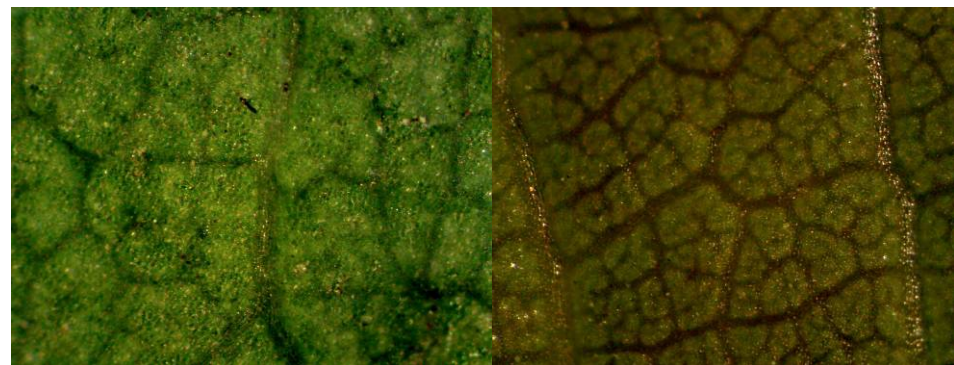
Mature leaf

Young leaf



Adaxial surface

Adaxial surface

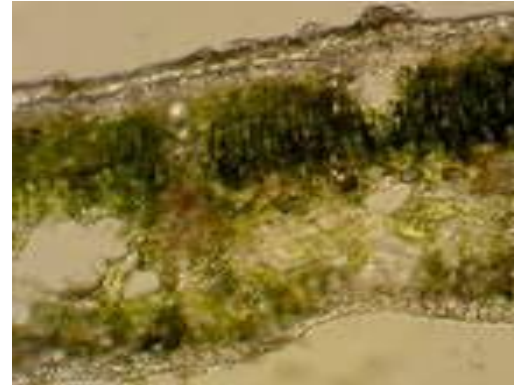


Abaxial surface

Abaxial surface

	Cuticle (mm)	Epidermis (mm)	Lamina (mm)
Mature leaf	0.0067	0.029	0.24
Young leaf	0.0043	0.026	0.16

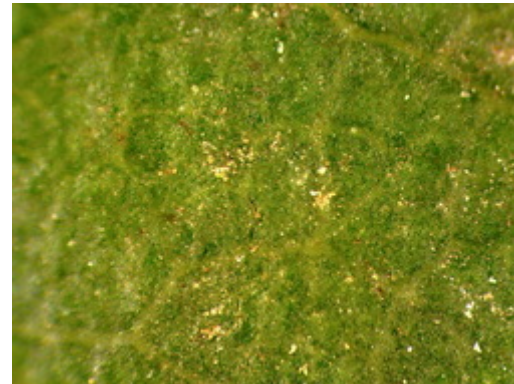
Eriobotrya japonica (Thunb.) Lindl.
Rosaceae



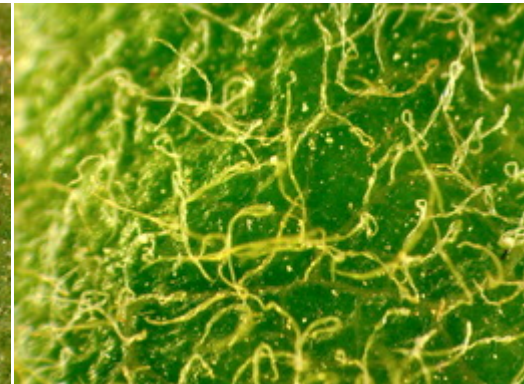
Mature leaf



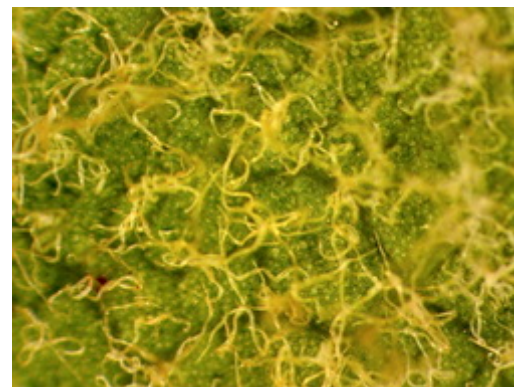
Young leaf



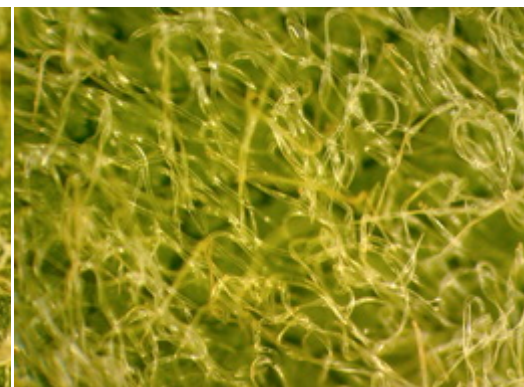
Adaxial surface



Adaxial surface



Abaxial surface

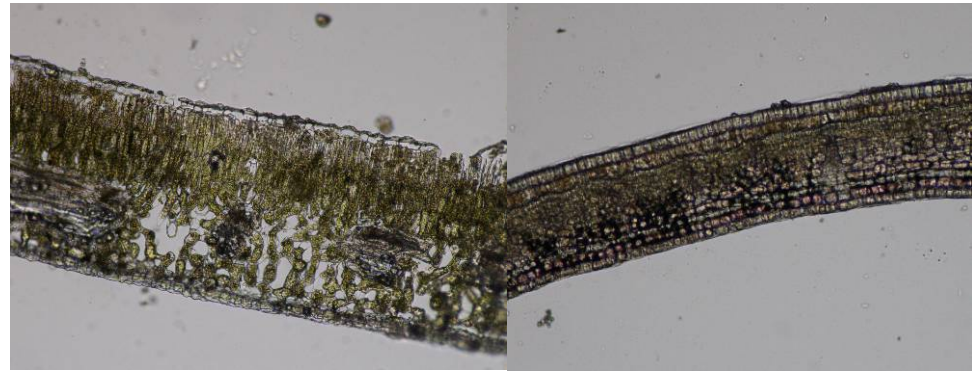


Abaxial surface

	Cuticle (mm)	Epidermis (mm)	Lamina (mm)
Mature leaf	0.0097	0.031	0.28
Young leaf	0.0044	0.022	0.17

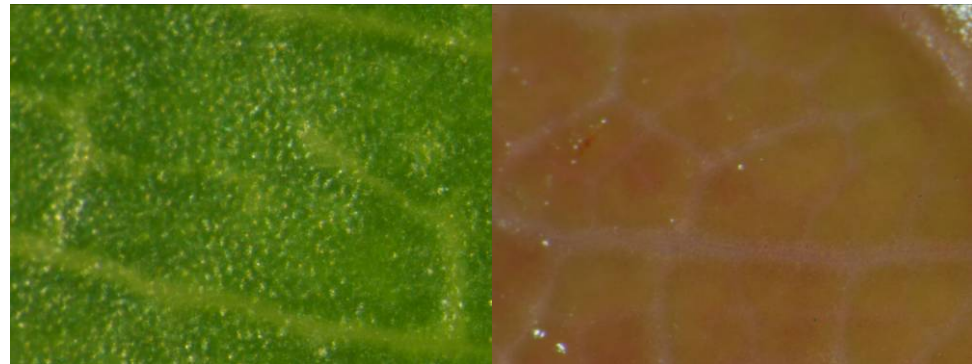
Malus halliana Koehne

Rosaceae



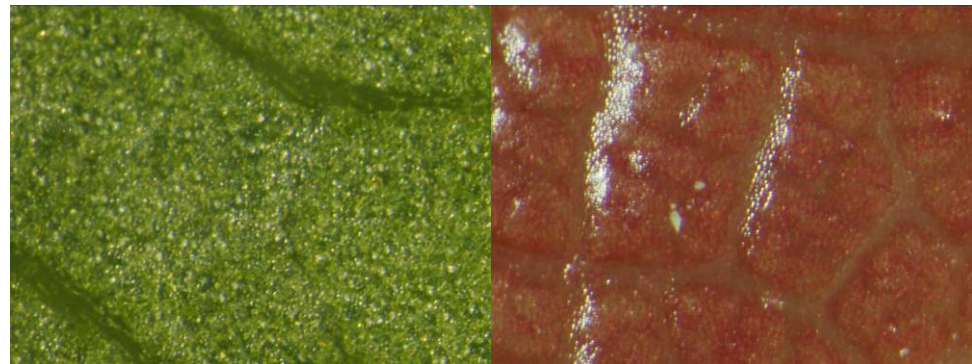
Mature leaf

Young leaf



Adaxial surface

Adaxial surface



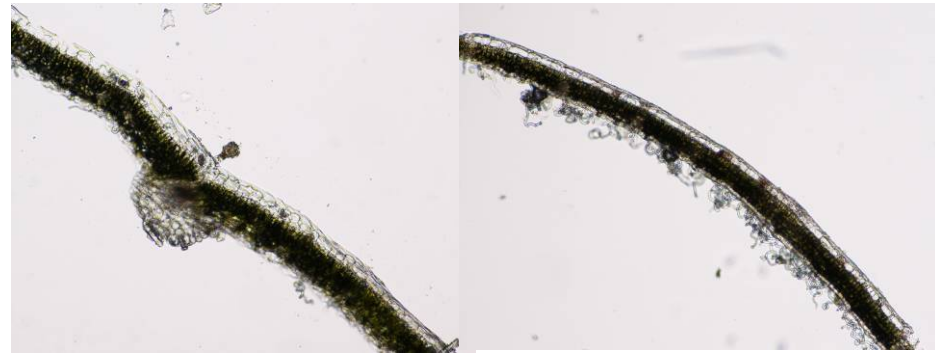
Abaxial surface

Abaxial surface

	Cuticle (mm)	Epidermis (mm)	Lamina (mm)
Mature leaf	0.0068	0.022	0.32
Young leaf	0.0027	0.026	0.22

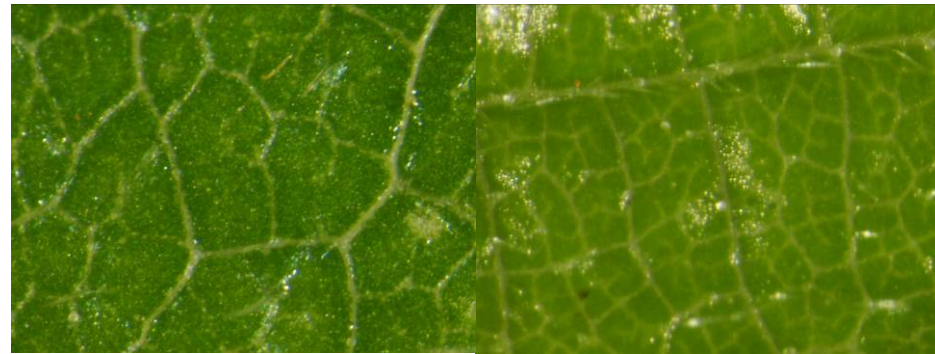
Rubus coreanus Miq.

Rosaceae



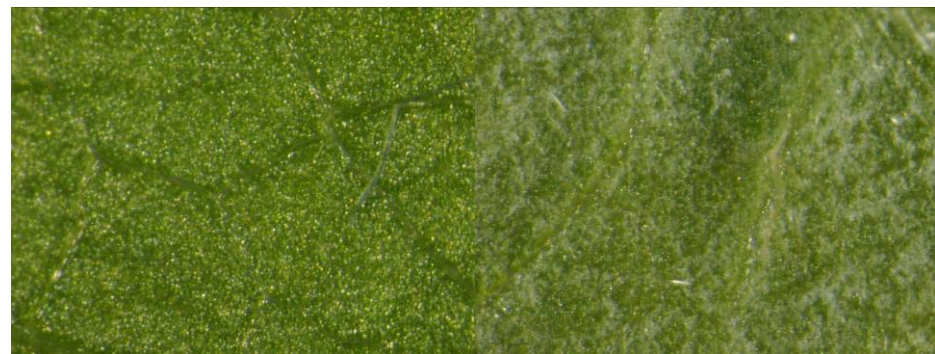
Mature leaf

Young leaf



Adaxial surface

Adaxial surface



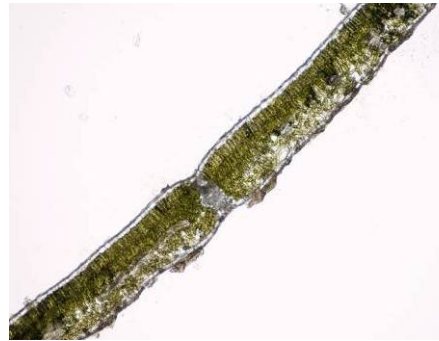
Abaxial surface

Abaxial surface

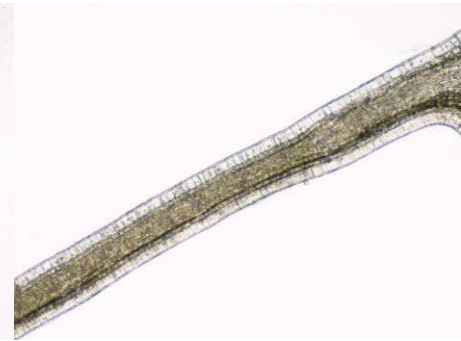
	Cuticle (mm)	Epidermis (mm)	Lamina (mm)
Mature leaf	0.0063	0.021	0.08
Young leaf	0.0055	0.016	0.05

Amygdalus persica Linn.

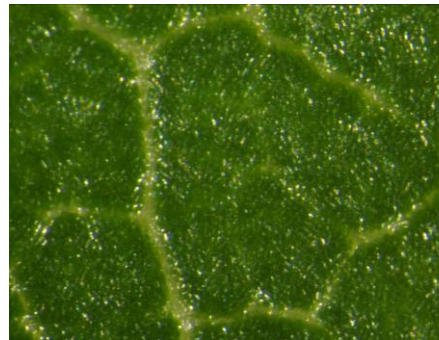
Rosaceae



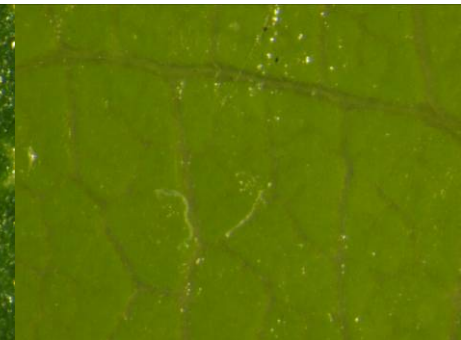
Mature leaf



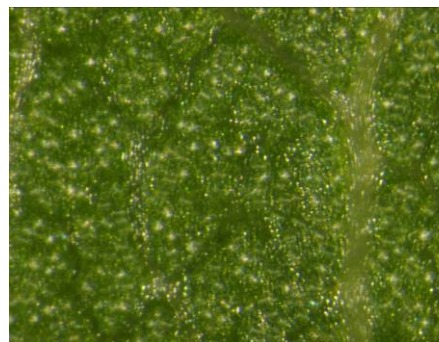
Young leaf



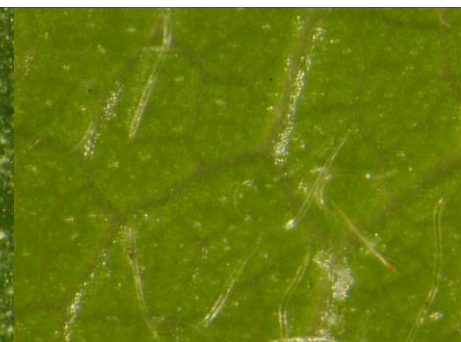
Adaxial surface



Adaxial surface



Abaxial surface



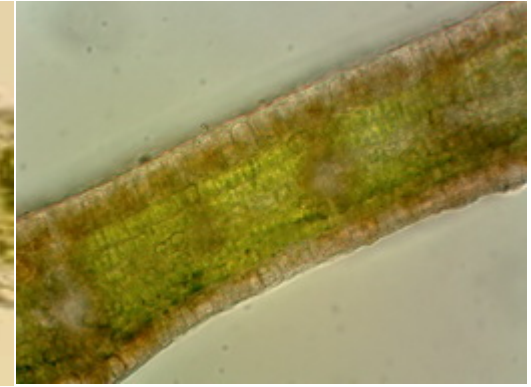
Abaxial surface

	Cuticle (mm)	Epidermis (mm)	Lamina (mm)
Mature leaf	0.0019	0.022	0.16
Young leaf	0.0021	0.012	0.08

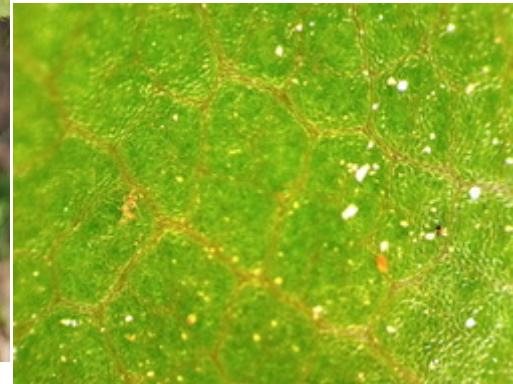
Prunus yedoensis Matsum.
Rosaceae



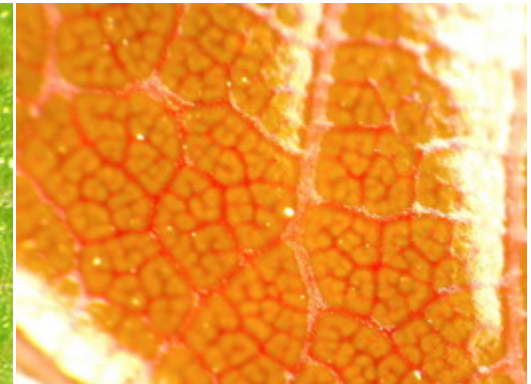
Mature leaf



Young leaf

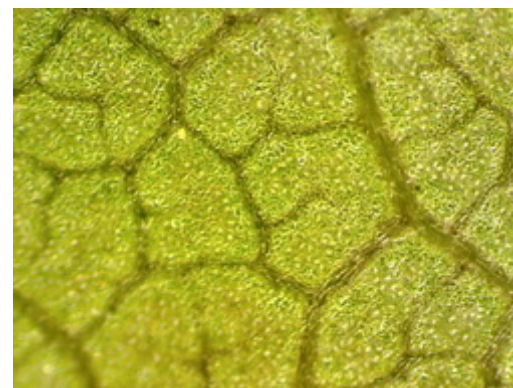


Adaxial surface



Adaxial surface

	Cuticle (mm)	Epidermis (mm)	Lamina (mm)
Mature leaf	0.0089	0.064	0.13
Young leaf	0.0029	0.035	0.15



Abaxial surface



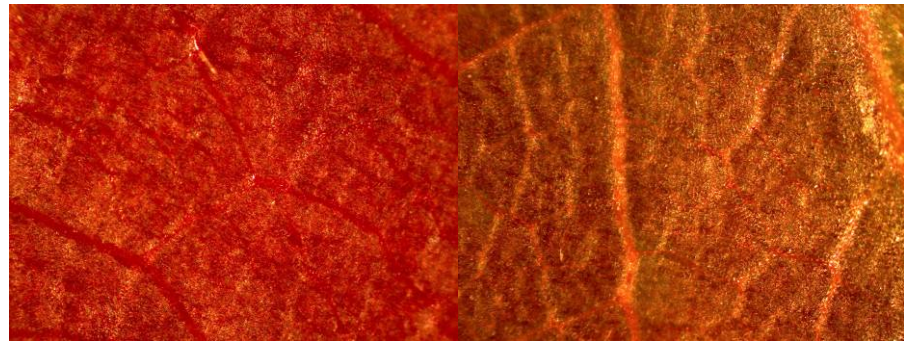
Abaxial surface

Prunus cerasifera Ehrh.
Rosaceae



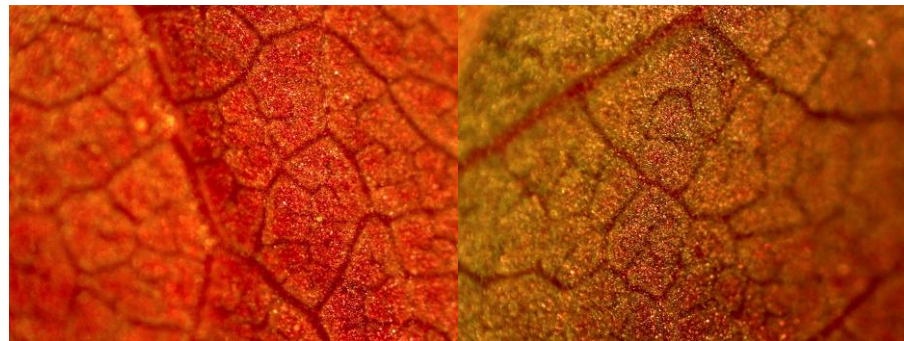
Mature leaf

Young leaf



Adaxial surface

Adaxial surface



Abaxial surface

Abaxial surface

	Cuticle (mm)	Epidermis (mm)	Lamina (mm)
Mature leaf	0.0040	0.019	0.15
Young leaf	0.0028	0.013	0.089

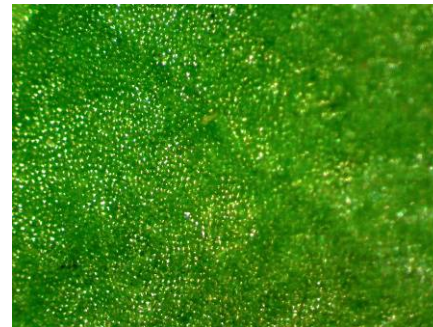
Lagerstroemia indica Linn.
Lythraceae



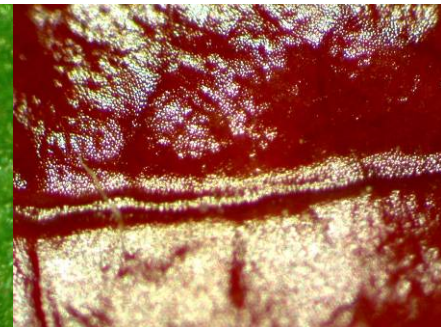
Mature leaf



Young leaf



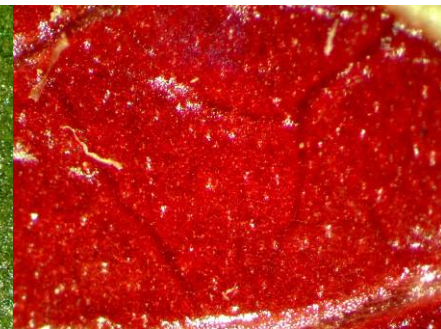
Adaxial surface



Adaxial surface



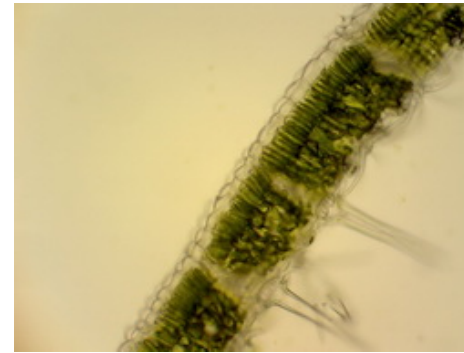
Abaxial surface



Abaxial surface

	Cuticle (mm)	Epidermi s (mm)	Lamina (mm)
Mature leaf	0.0068	0.025	0.22
Young leaf	0.0050	0.022	0.20

Firmiana platanifolia (Linn. f.) Marsili
Sterculiaceae



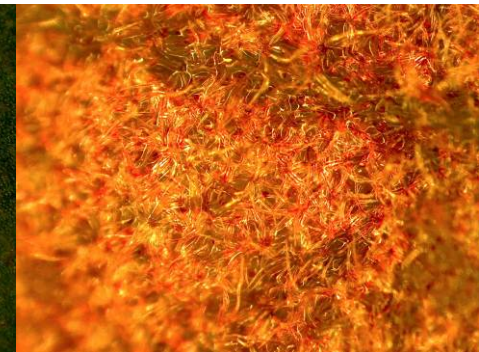
Mature leaf



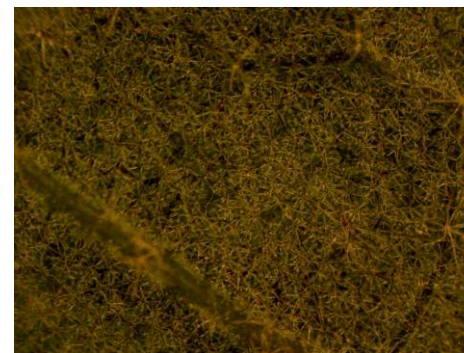
Young leaf



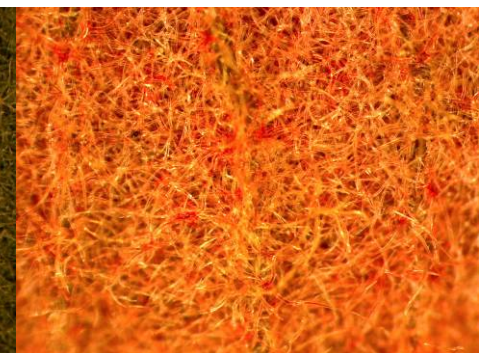
Adaxial surface



Adaxial surface



Abaxial surface

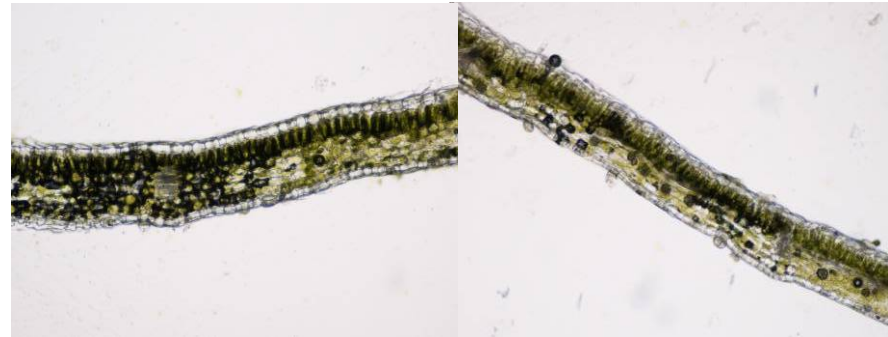


Abaxial surface

	Cuticle (mm)	Epidermis (mm)	Lamina (mm)
Mature leaf	0.0050	0.016	0.25
Young leaf	0.0063	0.019	0.29

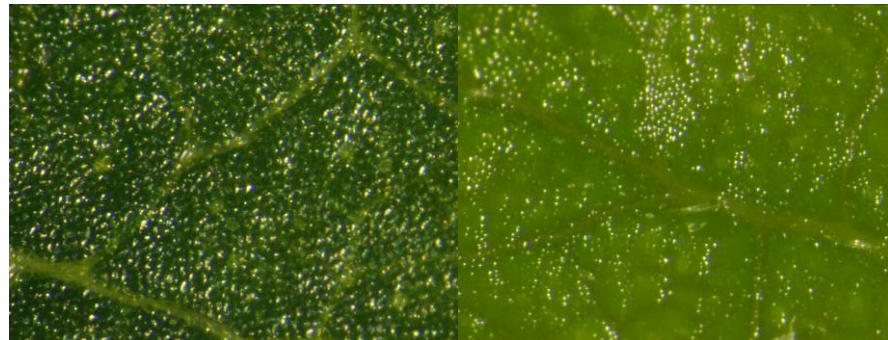
Hibiscus syriacus Linn.

Malvaceae



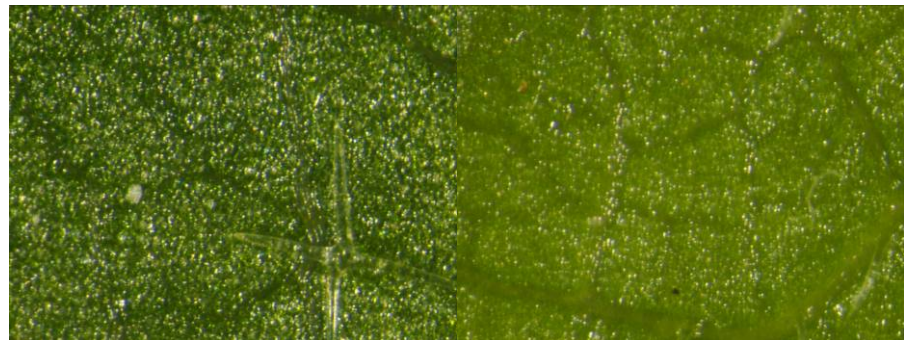
Mature leaf

Young leaf



Adaxial surface

Adaxial surface



Abaxial surface

Abaxial surface

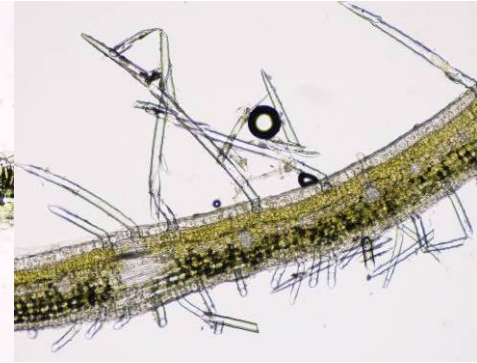
	Cuticle (mm)	Epidermis (mm)	Lamina (mm)
Mature leaf	0.0022	0.024	0.15
Young leaf	0.0018	0.022	0.15

Edgeworthia chrysantha Lindl.

Thymelaeaceae



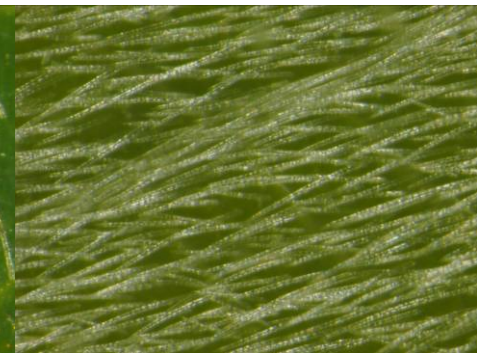
Mature leaf



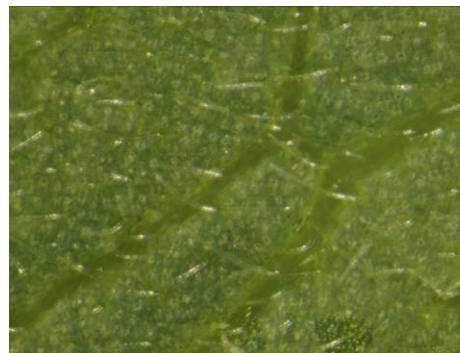
Young leaf



Adaxial surface



Adaxial surface



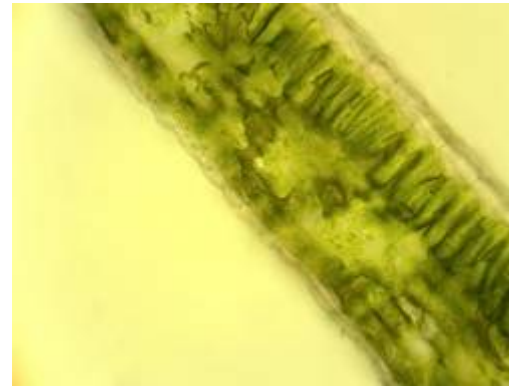
Abaxial surface



Abaxial surface

	Cuticle (mm)	Epidermis (mm)	Lamina (mm)
Mature leaf	0.0015	0.029	0.21
Young leaf	0.0013	0.026	0.14

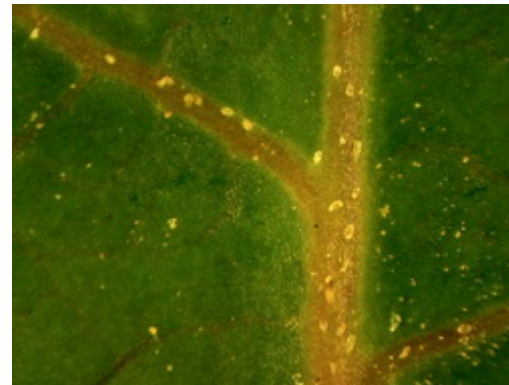
**Toona sinensis (A. Juss.) Roem
Meliaceae**



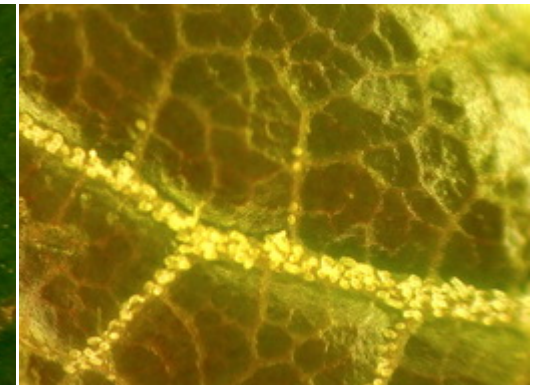
Mature leaf



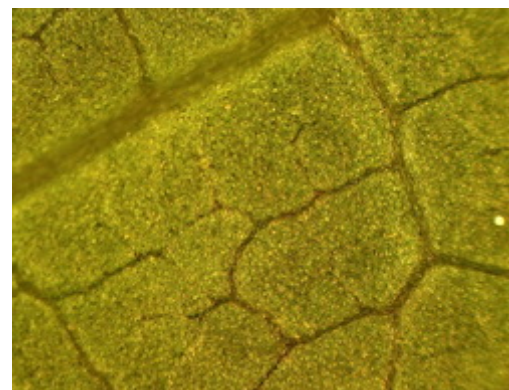
Young leaf



Adaxial surface



Adaxial surface



Abaxial surface

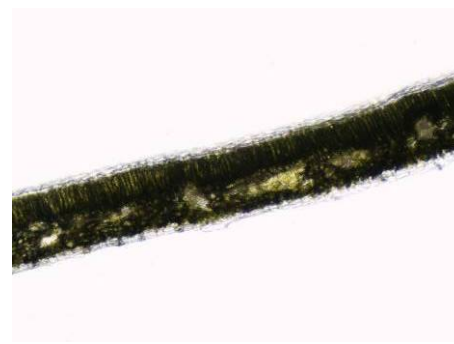


Abaxial surface

	Cuticle (mm)	Epidermis (mm)	Lamina (mm)
Mature leaf	0.0064	0.019	0.17
Young leaf	0.0049	0.024	0.14

Melia azedarach L.

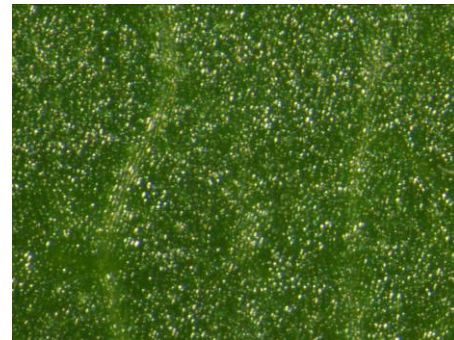
Meliaceae



Mature leaf



Young leaf



Adaxial surface



Adaxial surface



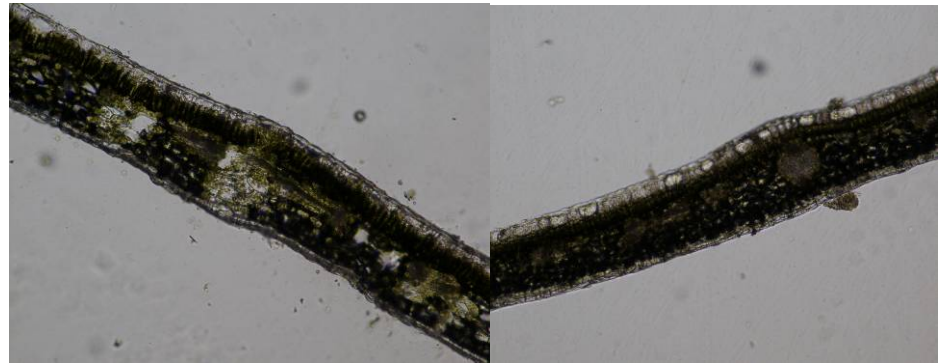
Abaxial surface



Abaxial surface

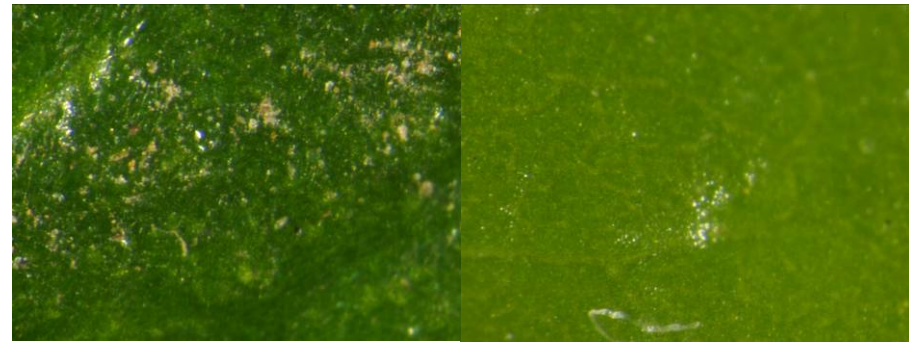
	Cuticle (mm)	Epidermis (mm)	Lamina (mm)
Mature leaf	0.0012	0.010	0.16
Young leaf	0.0015	0.012	0.10

Zanthoxylum armatum DC.
Rutaceae



Mature leaf

Young leaf



Adaxial surface

Adaxial surface



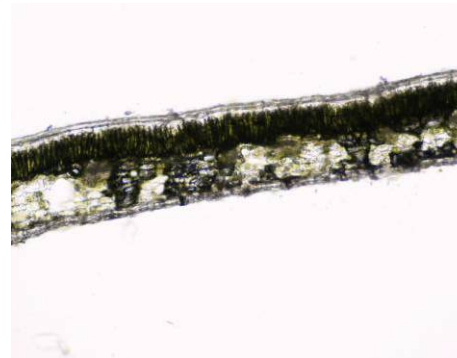
Abaxial surface

Abaxial surface

	Cuticle (mm)	Epidermis (mm)	Lamina (mm)
Mature leaf	0.0058	0.032	0.18
Young leaf	0.0046	0.032	0.13

Zanthoxylum bungeanum Maxim.

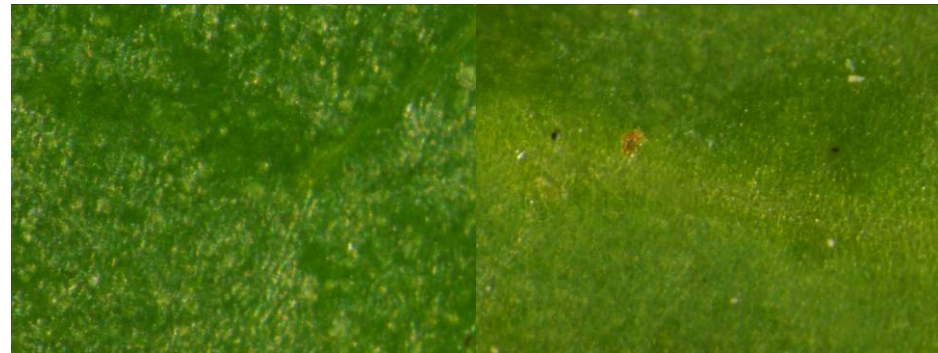
Rutaceae



Mature leaf

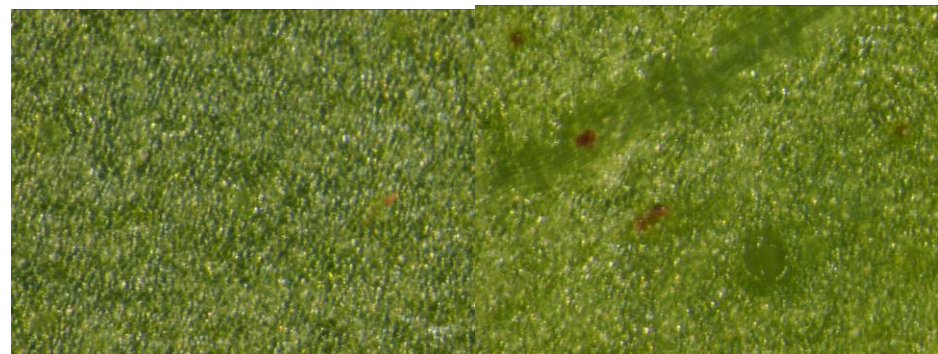


Young leaf



Adaxial surface

Adaxial surface



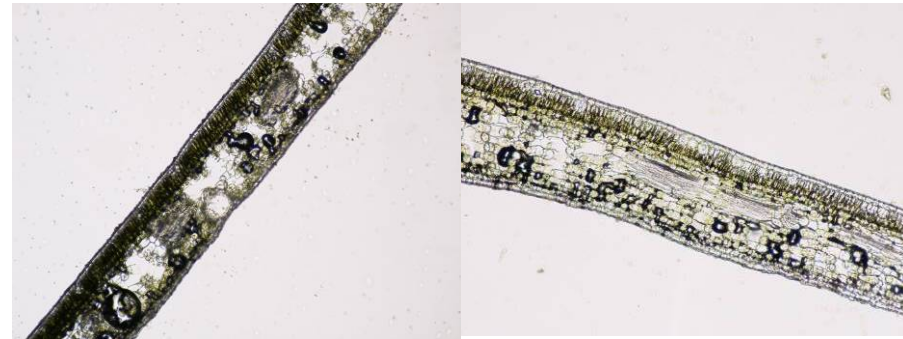
Abaxial surface

Abaxial surface

	Cuticle (mm)	Epidermis (mm)	Lamina (mm)
Mature leaf	0.0045	0.020	0.18
Young leaf	0.0025	0.013	0.15

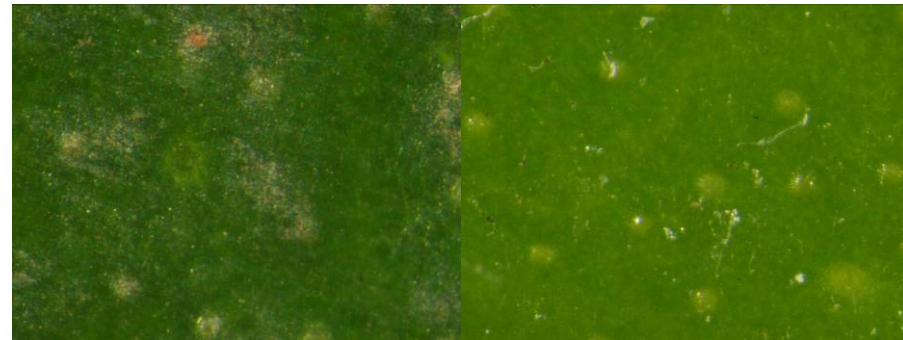
Citrus reticulata Blanco

Rutaceae



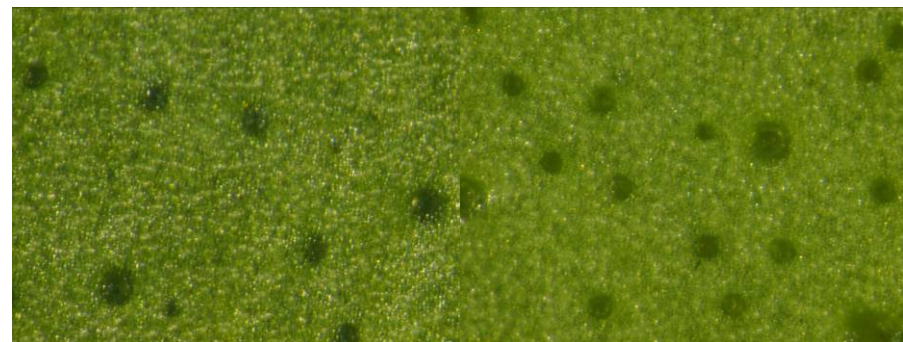
Mature leaf

Young leaf



Adaxial surface

Adaxial surface



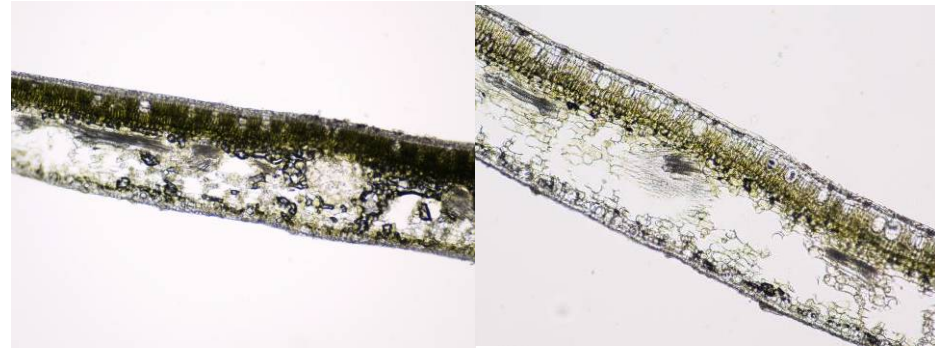
Abaxial surface

Abaxial surface

	Cuticle (mm)	Epidermis (mm)	Lamina (mm)
Mature leaf	0.0029	0.027	0.22
Young leaf	0.0029	0.036	0.22

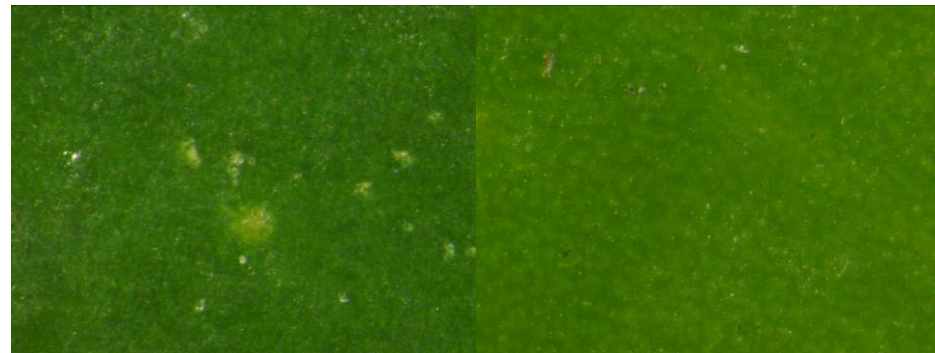
Citrus maxima (Burm.) Merr.

Rutaceae



Mature leaf

Young leaf



Adaxial surface

Adaxial surface



Abaxial surface

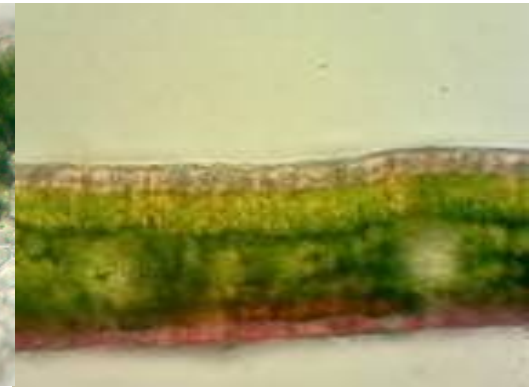
Abaxial surface

	Cuticle (mm)	Epidermis (mm)	Lamina (mm)
Mature leaf	0.0057	0.041	0.31
Young leaf	0.0051	0.040	0.29

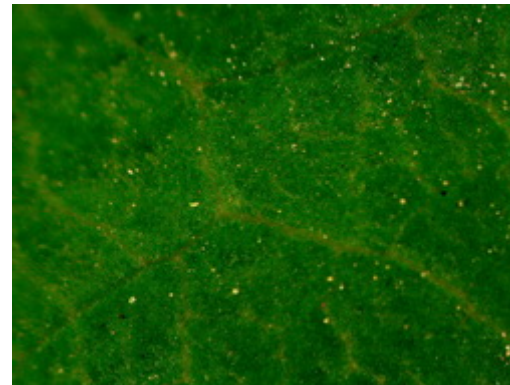
Koelreuteria bipinnata Franch.
Sapindaceae



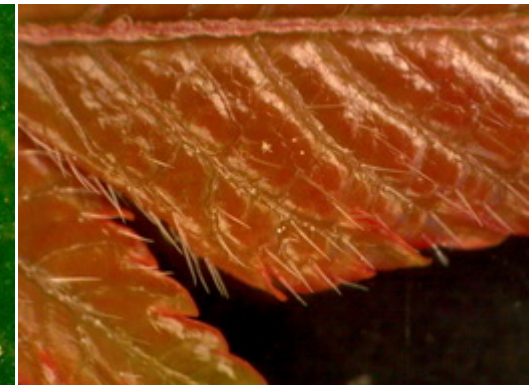
Mature leaf



Young leaf



Adaxial surface



Adaxial surface(min)



Abaxial surface



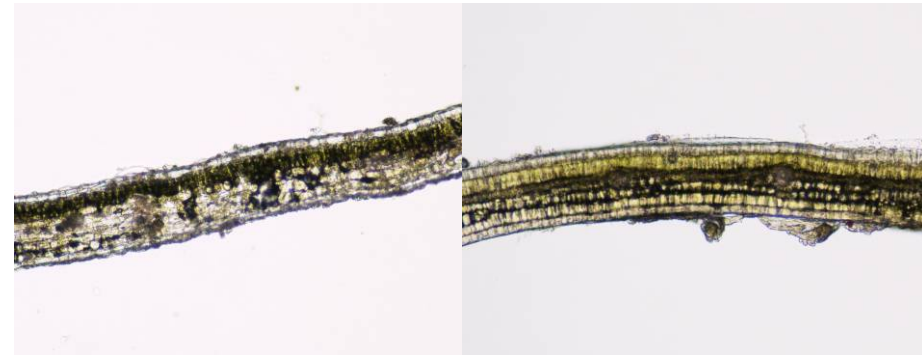
Abaxial surface(min)

	Cuticle (mm)	Epidermis (mm)	Lamina (mm)
Mature leaf	0.0075	0.021	0.20
Young leaf	0.0050	0.020	0.16

Choerospondias axillaria (Roxb.)

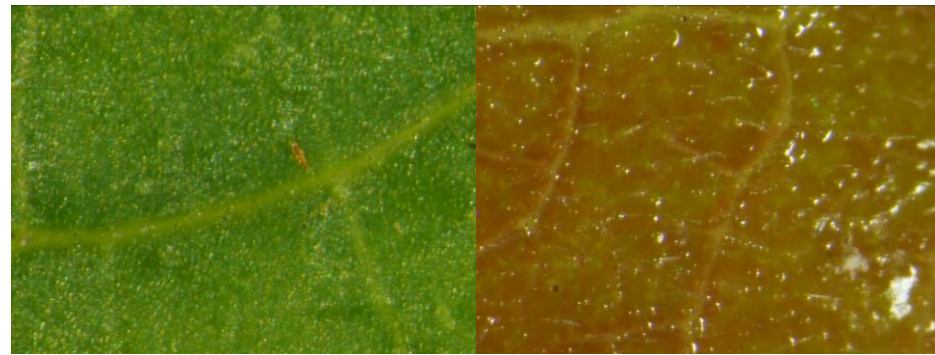
Burtt et Hill

Anacardiaceae



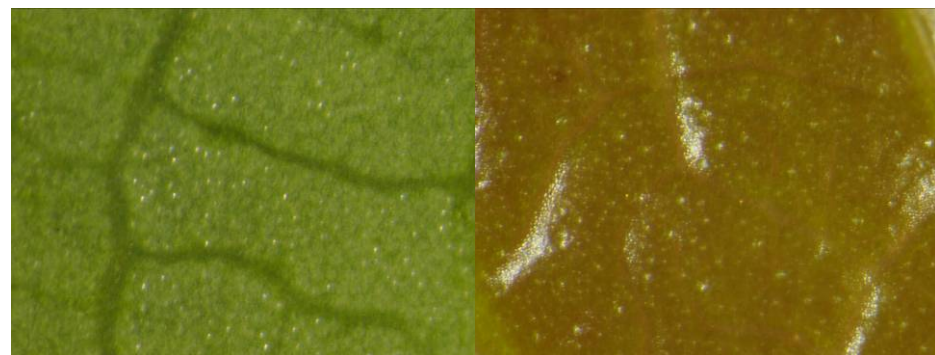
Mature leaf

Young leaf



Adaxial surface

Adaxial surface

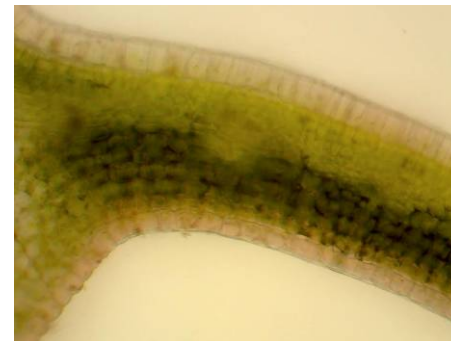


Abaxial surface

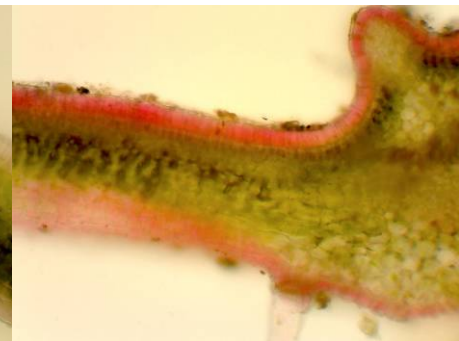
Abaxial surface

	Cuticle (mm)	Epidermis (mm)	Lamina (mm)
Mature leaf	0.0012	0.012	0.10
Young leaf	0.0011	0.013	0.10

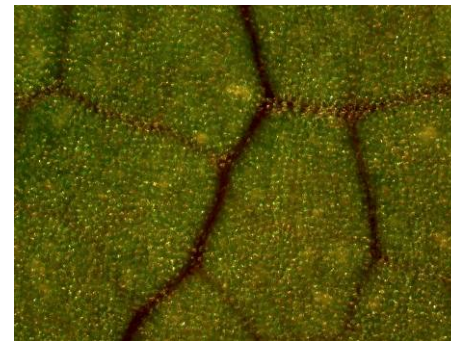
Parthenocissus tricuspidata (S. Et Z.) Planch
Vitaceae



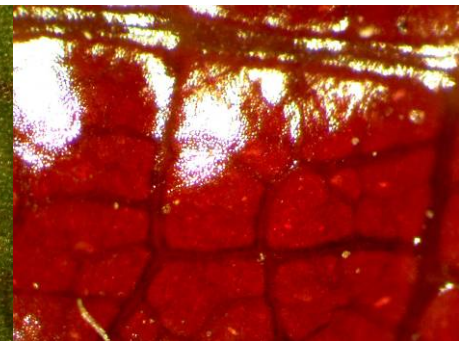
Mature leaf



Young leaf



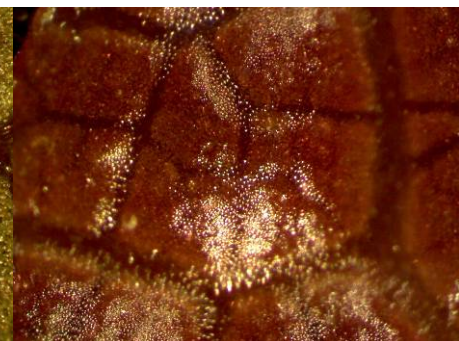
Adaxial surface



Adaxial surface



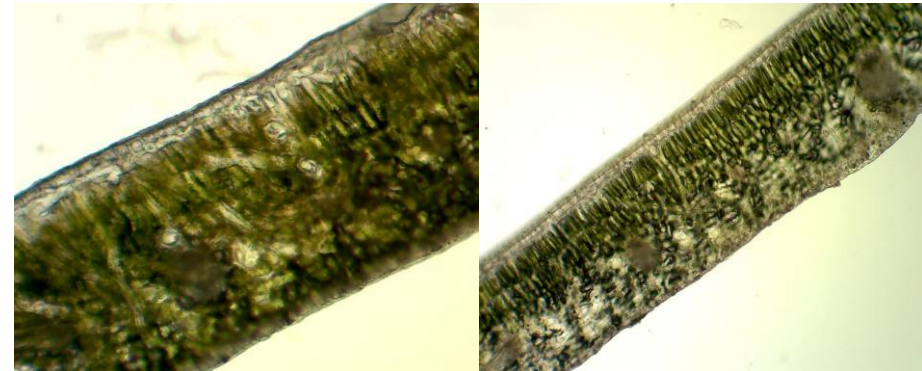
Abaxial surface



Abaxial surface

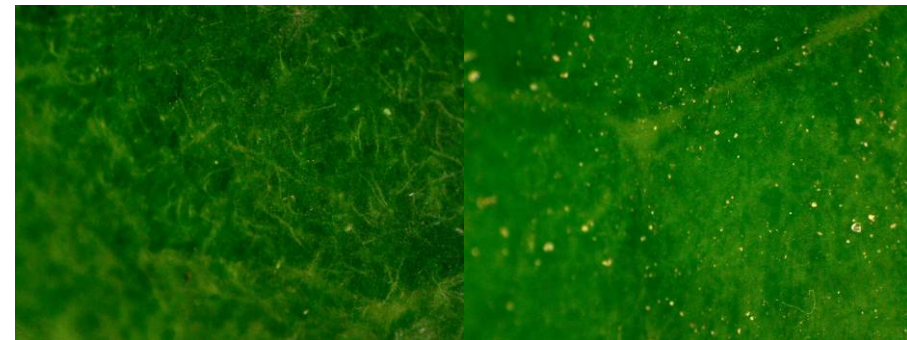
	Cuticle (mm)	Epidermis (mm)	Lamina (mm)
Mature leaf	0.0094	0.037	0.27
Young leaf	0.0054	0.020	0.18

Distylium racemosum Sieb. et Zucc.
Hamamelidaceae



Mature leaf

Young leaf



Adaxial surface

Adaxial surface

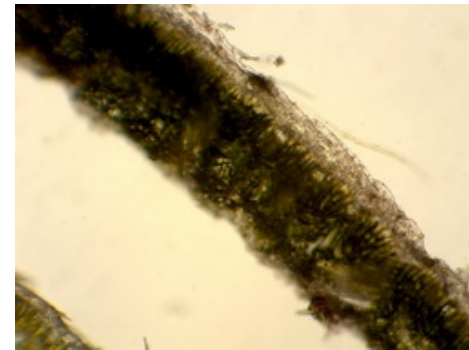


Abaxial surface

Abaxial surface

	Cuticle (mm)	Epidermis (mm)	Lamina (mm)
Mature leaf	0.0066	0.023	0.16
Young leaf	0.0093	0.025	0.37

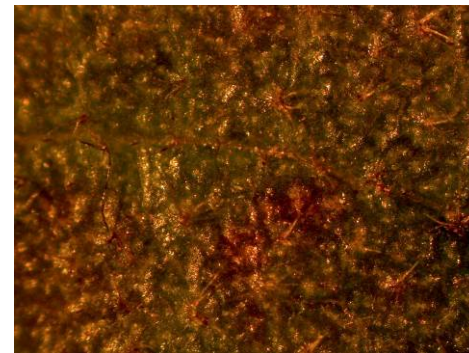
**Loropetalum chinense (R.Br.) Oliv.
var. rubrum Yieh
Hamamelidaceae**



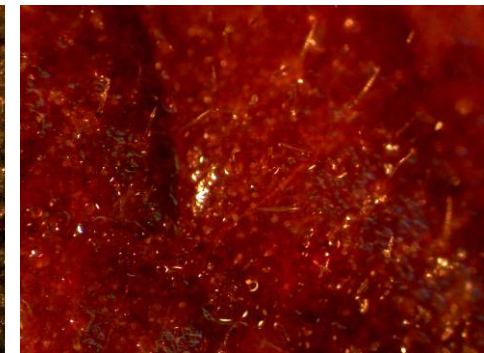
Mature leaf



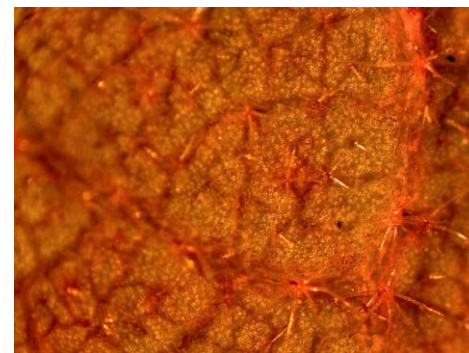
Young leaf



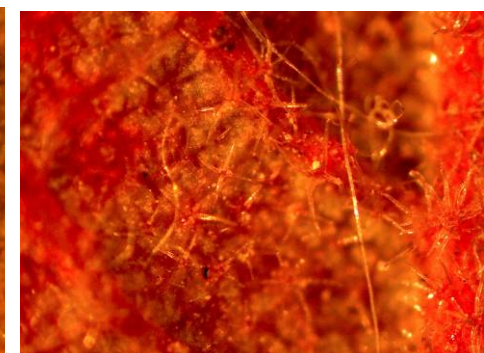
Adaxial surface



Adaxial surface



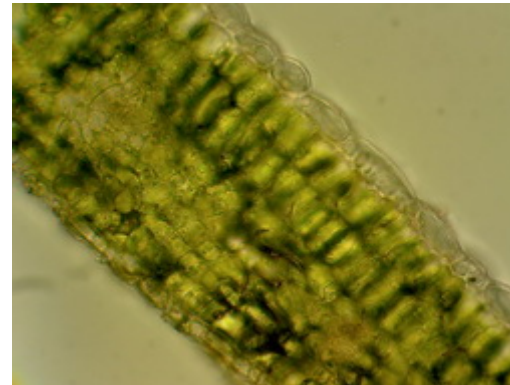
Abaxial surface



Abaxial surface

	Cuticle (mm)	Epidermis (mm)	Lamina (mm)
Mature leaf	0.0127	0.044	0.33
Young leaf	0.0038	0.022	0.20

Liquidambar formosana Hance
Hamamelidaceae



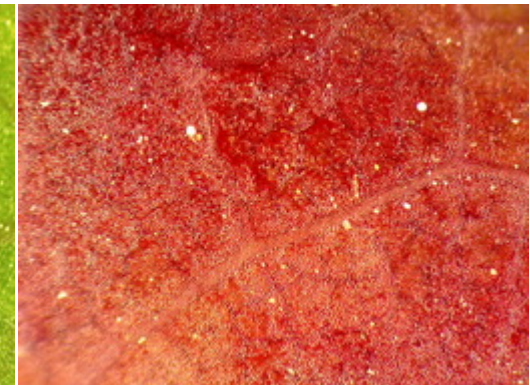
Mature leaf



Young leaf



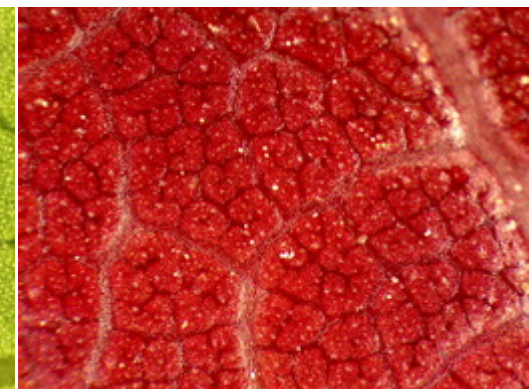
Adaxial surface



Adaxial surface



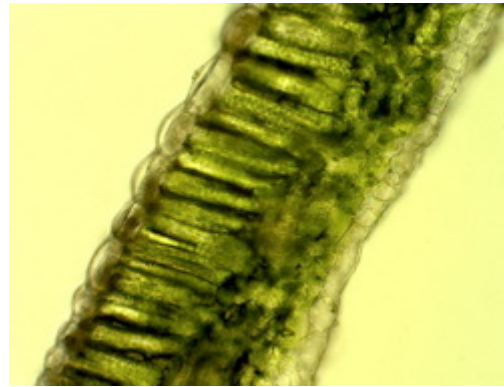
Abaxial surface



Abaxial surface

	Cuticle (mm)	Epidermis (mm)	Lamina (mm)
Mature leaf	0.0073	0.027	0.19
Young leaf	0.0047	0.023	0.17

Deutzia ningpoensis Rehd.
Saxifragaceae



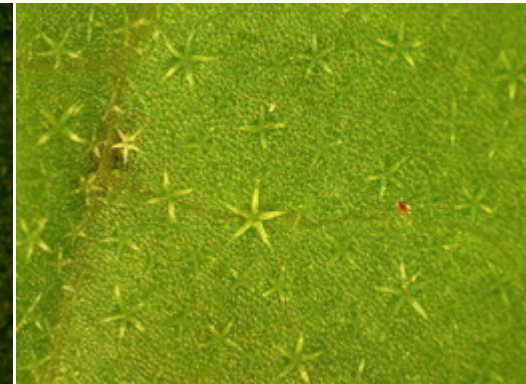
Mature leaf



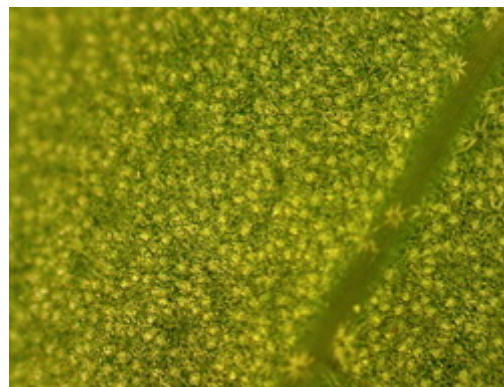
Young leaf



Adaxial surface



Adaxial surface



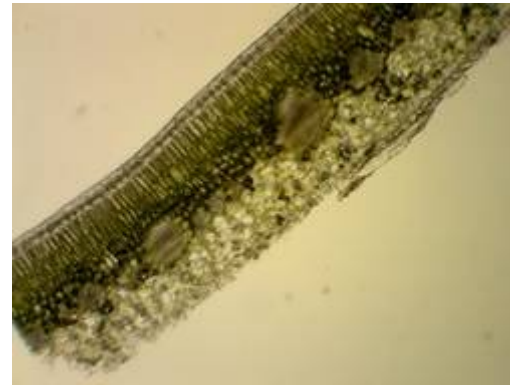
Abaxial surface



Abaxial surface

	Cuticle (mm)	Epidermis (mm)	Lamina (mm)
Mature leaf	0.0059	0.027	0.28
Young leaf	0.0027	0.014	0.15

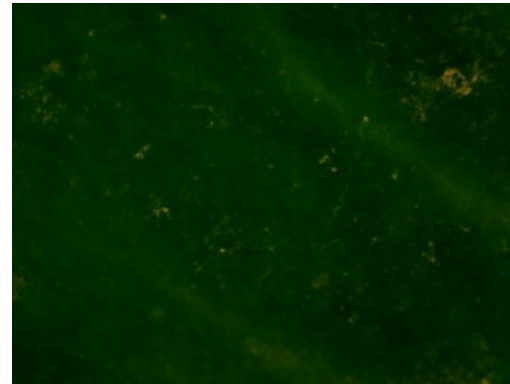
Buxus sinica (Rehd. et Wils.) Cheng
Buxaceae



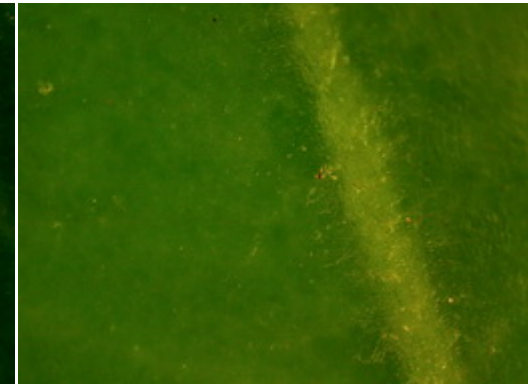
Mature leaf



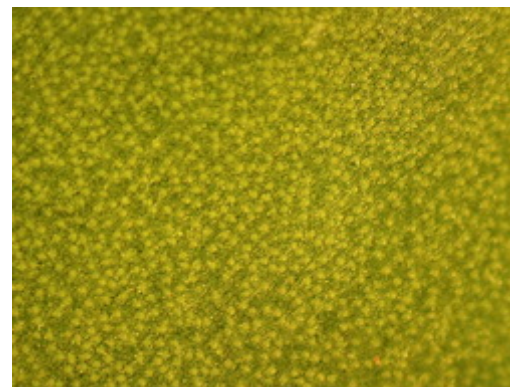
Young leaf



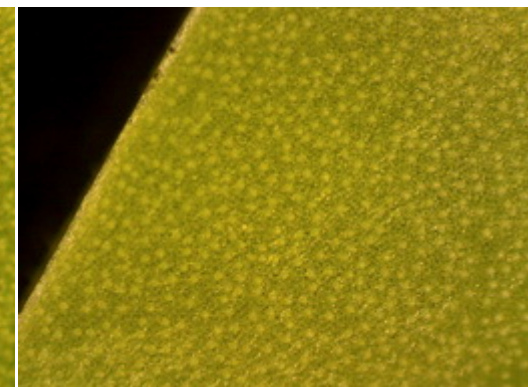
Adaxial surface



Adaxial surface



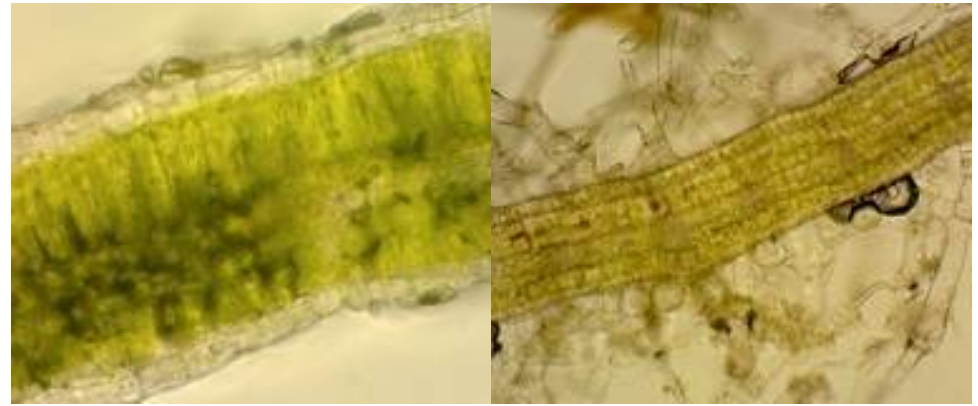
Abaxial surface



Abaxial surface

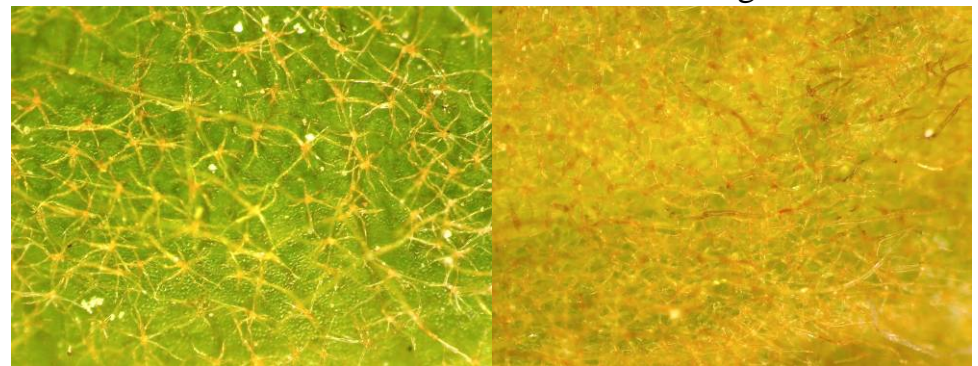
	Cuticle (mm)	Epidermis (mm)	Lamina (mm)
Mature leaf	0.0111	0.029	0.41
Young leaf	0.0052	0.031	0.26

Platanus acerifolia (Ait.) Willd.
Platanaceae



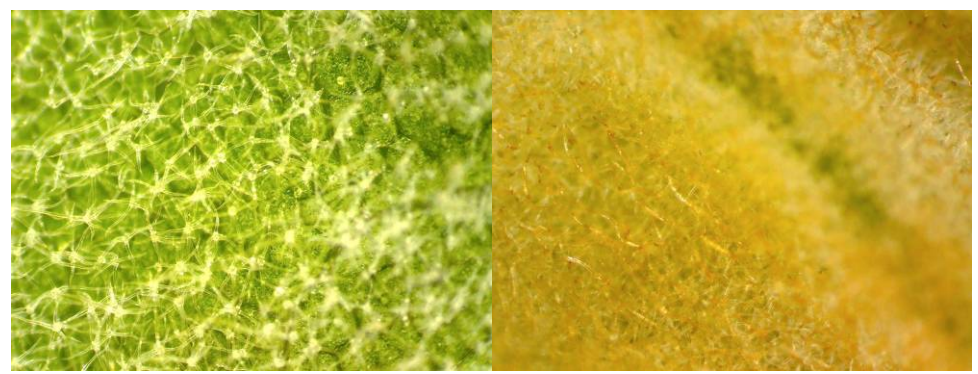
Mature leaf

Young leaf



Adaxial surface

Adaxial surface

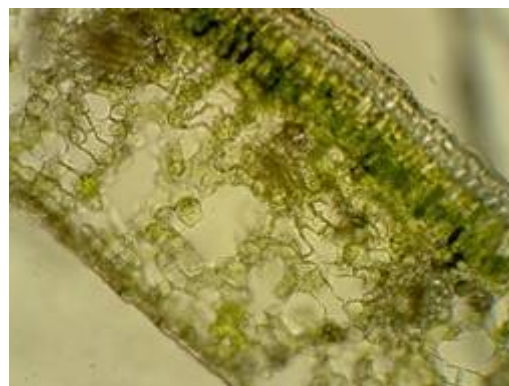


Abaxial surface

Abaxial surface

	Cuticle (mm)	Epidermis (mm)	Lamina (mm)
Mature leaf	0.0093	0.025	0.25
Young leaf	0.0054	0.014	0.22

Mahonia bealei (Fort.) Carr.
Berberidaceae



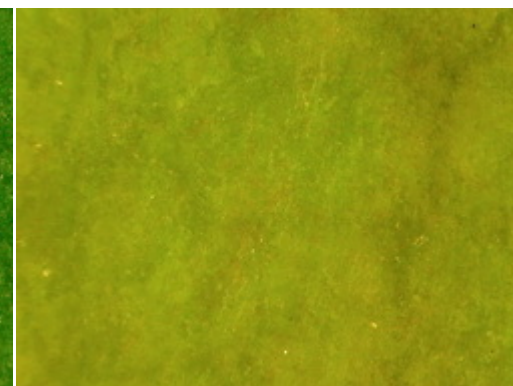
Mature leaf



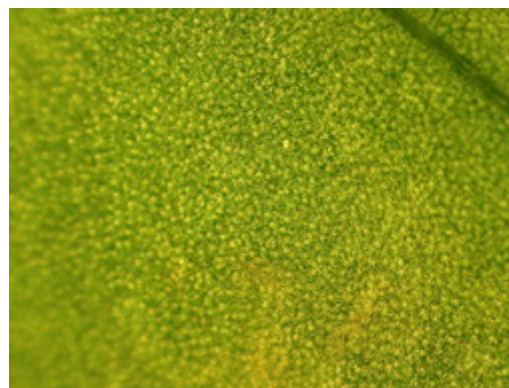
Young leaf



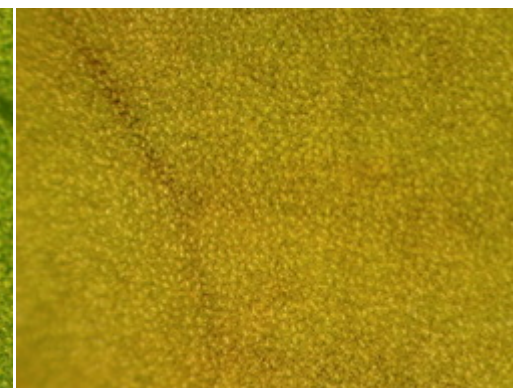
Adaxial surface



Adaxial surface



Abaxial surface



Abaxial surface

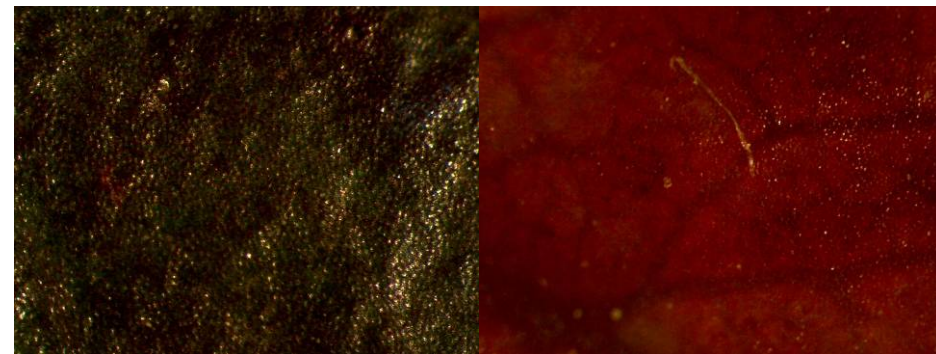
	Cuticle (mm)	Epidermis (mm)	Lamina (mm)
Mature leaf	0.0108	0.029	0.38
Young leaf	0.0037	0.024	0.28

Nandina domestica Thunb.
Berberidaceae



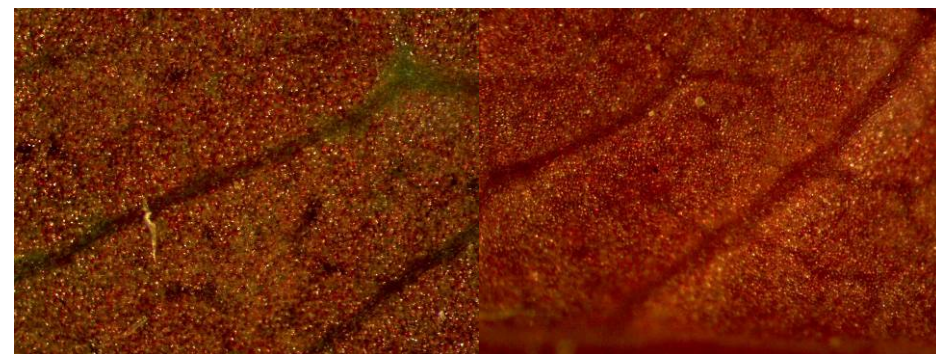
Mature leaf

Young leaf



Adaxial surface

Adaxial surface

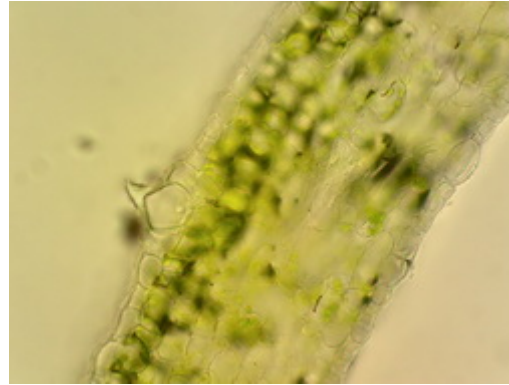


Abaxial surface

Abaxial surface

	Cuticle (mm)	Epidermis (mm)	Lamina (mm)
Mature leaf	0.0093	0.023	0.30
Young leaf	0.0043	0.021	0.29

Chimonanthus praecox (linn.) Link.
Calycanthaceae



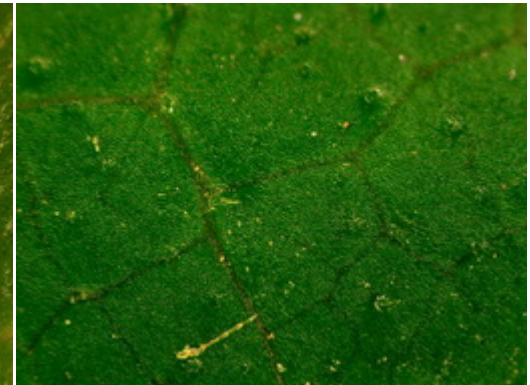
Mature leaf



Young leaf



Adaxial surface



Adaxial surface



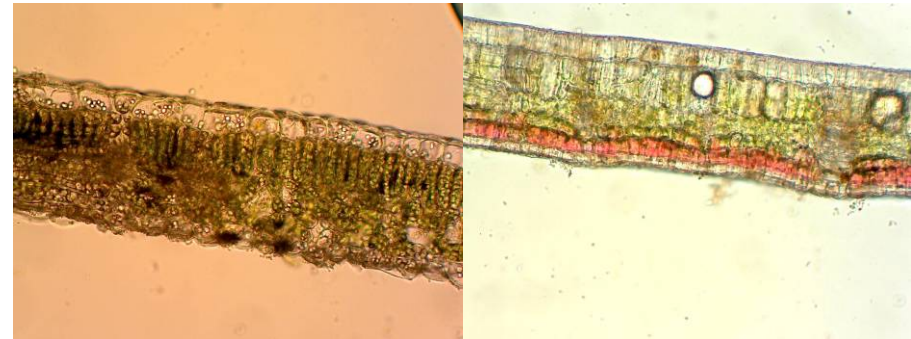
Abaxial surface



Abaxial surface

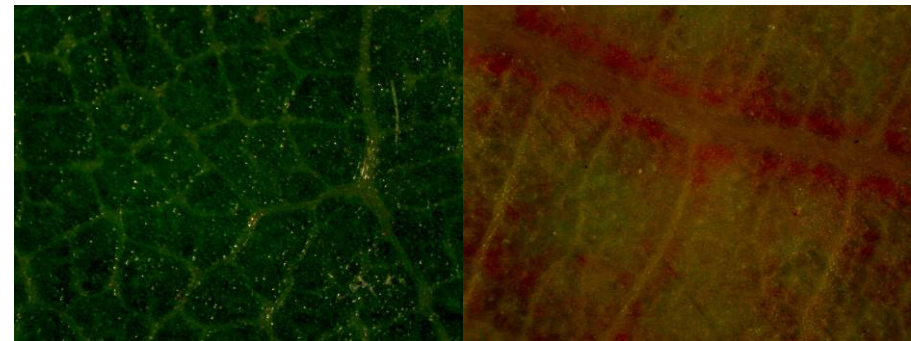
	Cuticle (mm)	Epidermis (mm)	Lamina (mm)
Mature leaf	0.0095	0.025	0.23
Young leaf	0.0033	0.022	0.18

Cinnamomum camphora (L.) Presl.
Lauraceae



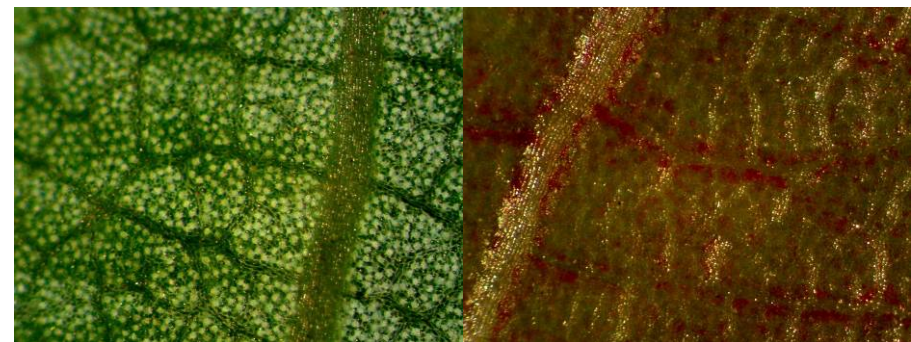
Mature leaf

Young leaf



Adaxial surface

Adaxial surface

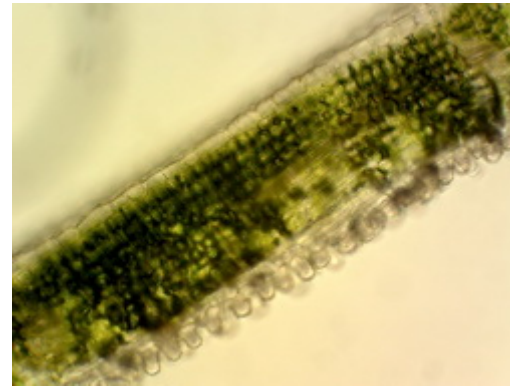


Abaxial surface

Abaxial surface

	Cuticle (mm)	Epidermis (mm)	Lamina (mm)
Mature leaf	0.0073	0.027	0.25
Young leaf	0.0037	0.021	0.20

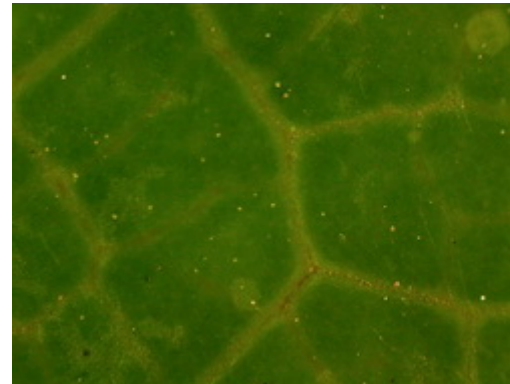
Liriodendron chinense (Hemsl.) Sarg.
Magnoliaceae



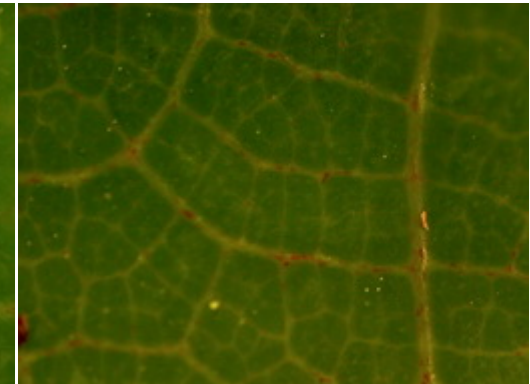
Mature leaf



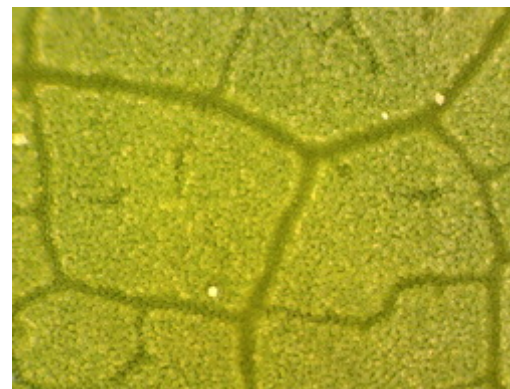
Young leaf



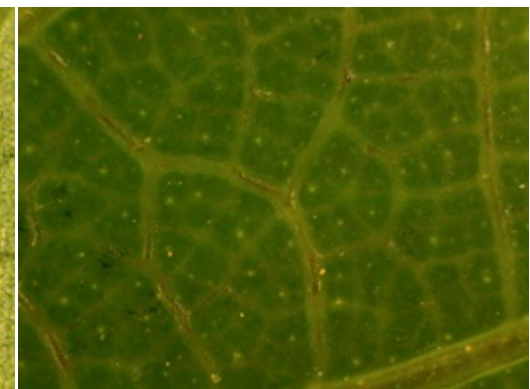
Adaxial surface



Adaxial surface



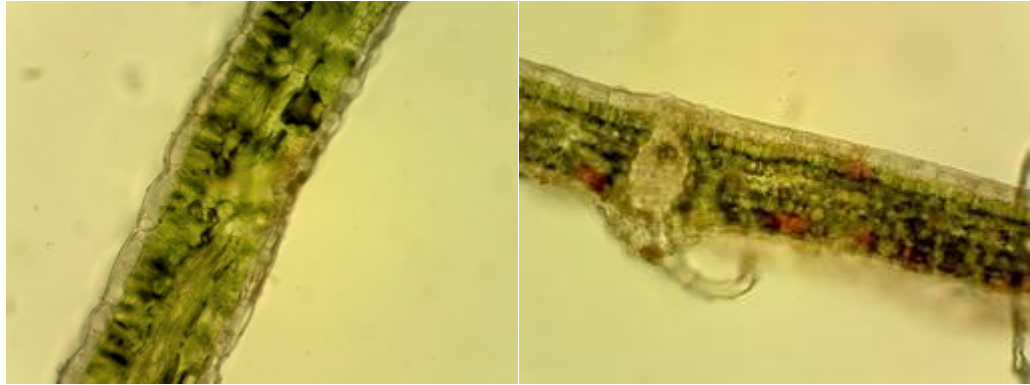
Abaxial surface



Abaxial surface

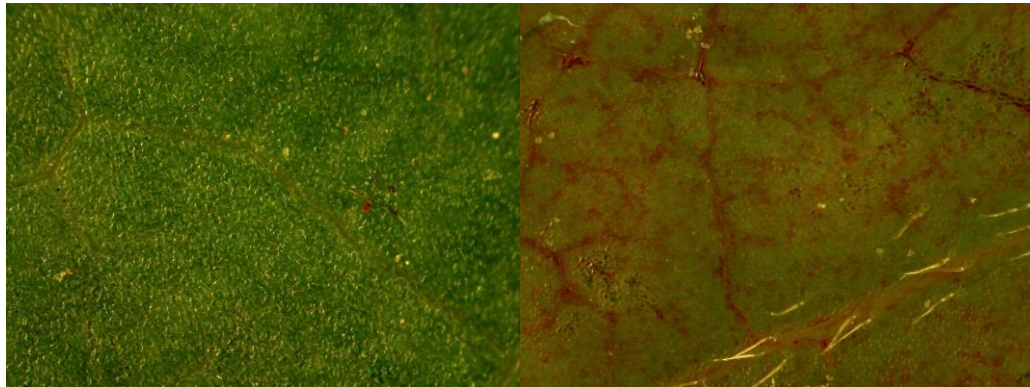
	Cuticle (mm)	Epidermis (mm)	Lamina (mm)
Mature leaf	0.0060	0.025	0.23
Young leaf	0.0050	0.023	0.19

Magnolia liliflora Desr.
Magnoliaceae



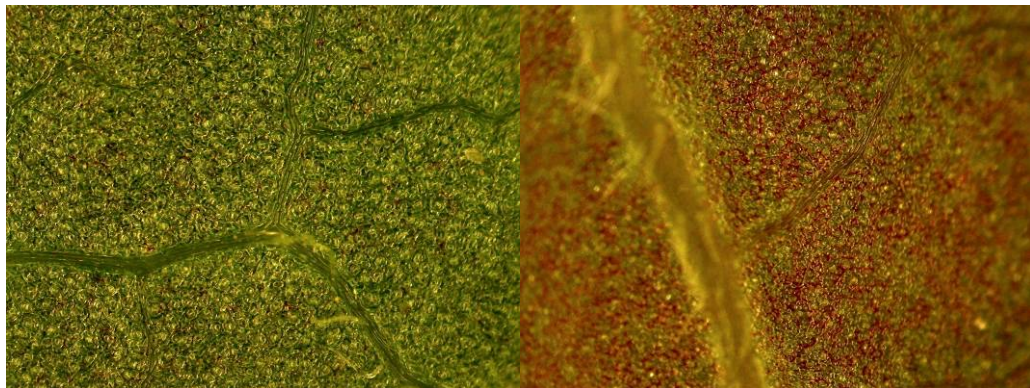
Mature leaf

Young leaf



Adaxial surface

Adaxial surface

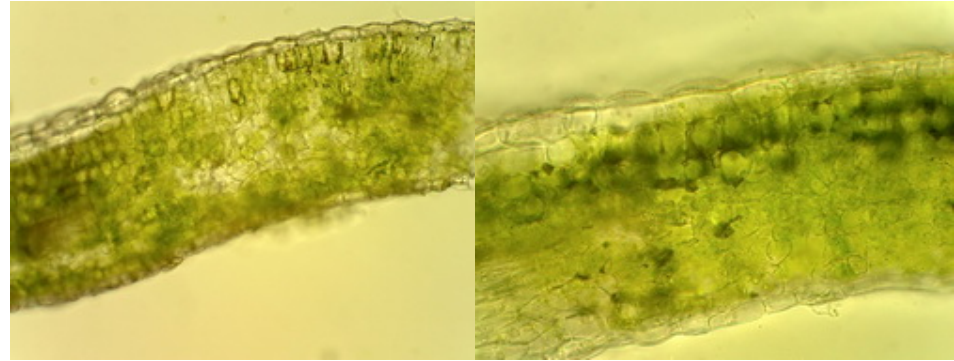


Abaxial surface

Abaxial surface

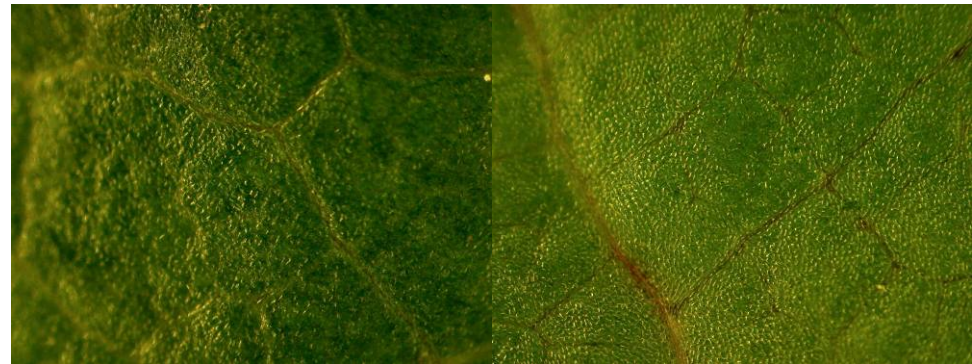
	Cuticle (mm)	Epidermis (mm)	Lamina (mm)
Mature leaf	0.0068	0.022	0.22
Young leaf	0.0025	0.016	0.23

Magnolia denudata Desr.
Magnoliaceae



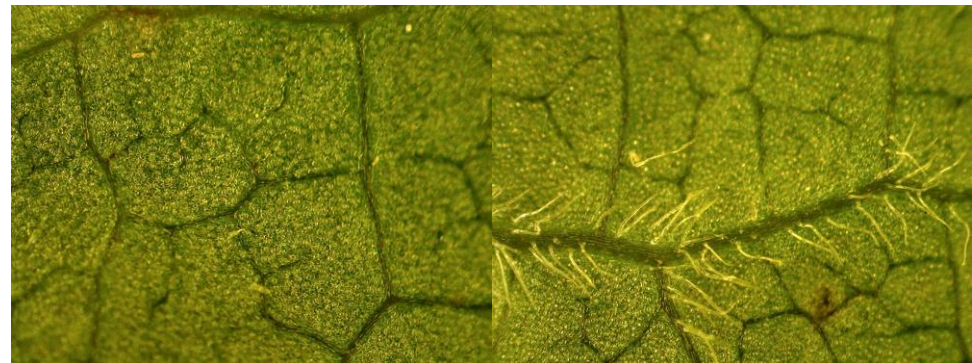
Mature leaf

Young leaf



Adaxial surface

Adaxial surface



Abaxial surface

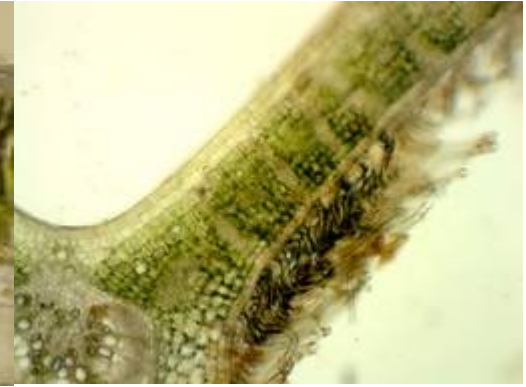
Abaxial surface

	Cuticle (mm)	Epidermis (mm)	Lamina (mm)
Mature leaf	0.0062	0.023	0.32
Young leaf	0.0036	0.020	0.28

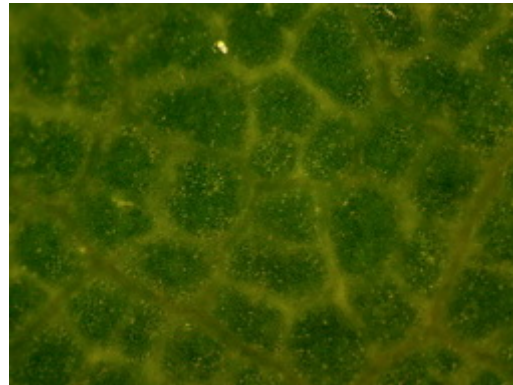
Magnolia grandiflora linn.
Magnoliaceae



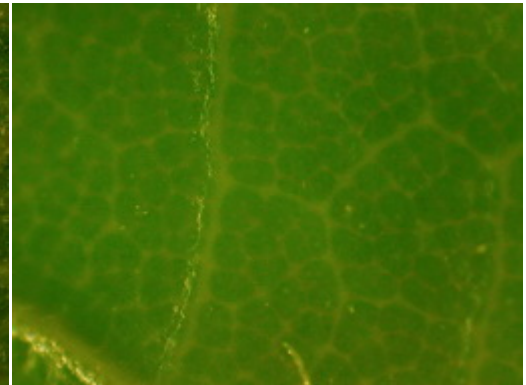
Mature leaf



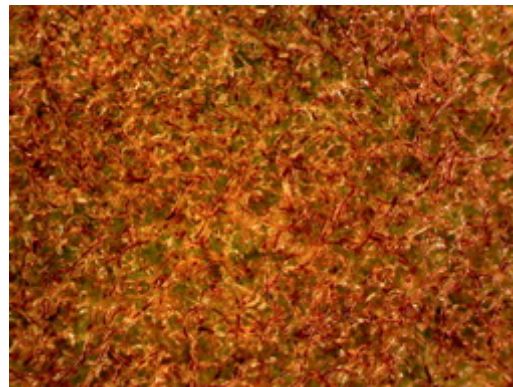
Young leaf



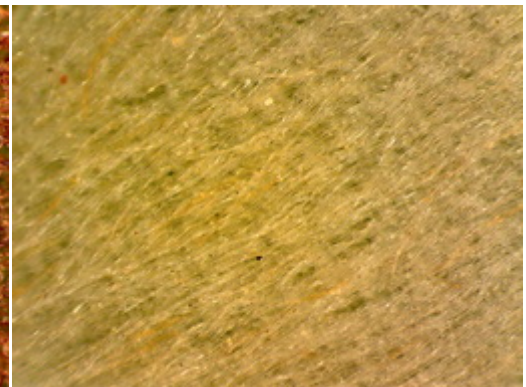
Adaxial surface



Adaxial surface



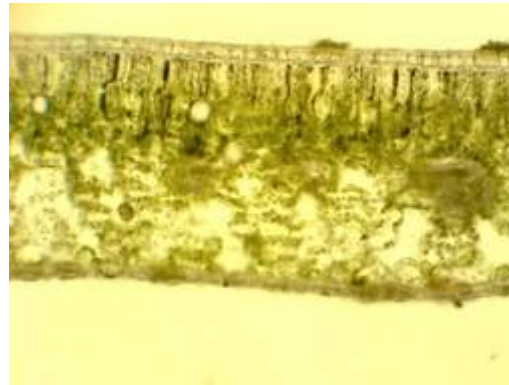
Abaxial surface



Abaxial surface

	Cuticle (mm)	Epidermis (mm)	Lamina (mm)
Mature leaf	0.016	0.043	0.40
Young leaf	0.0083	0.031	0.31

Michelia figo (Lour.) Spreng.
Magnoliaceae



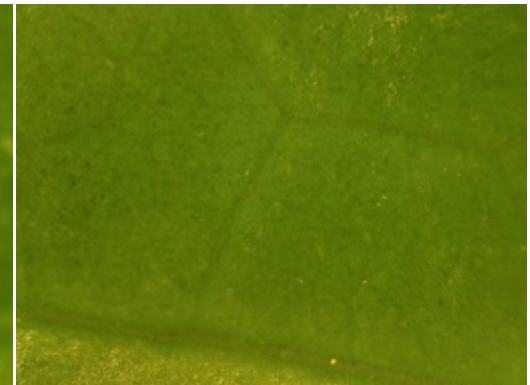
Mature leaf



Young leaf



Adaxial surface



Adaxial surface



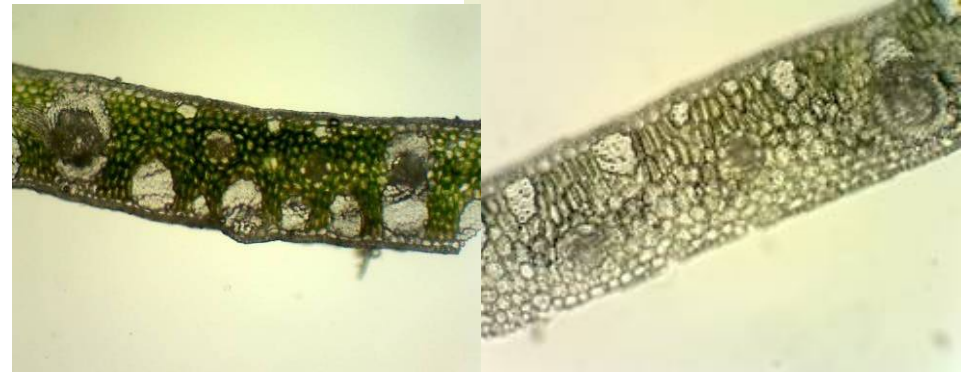
Abaxial surface



Abaxial surface

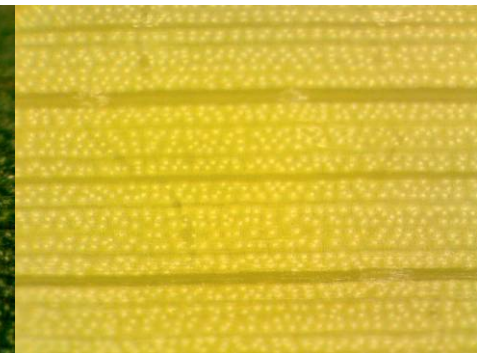
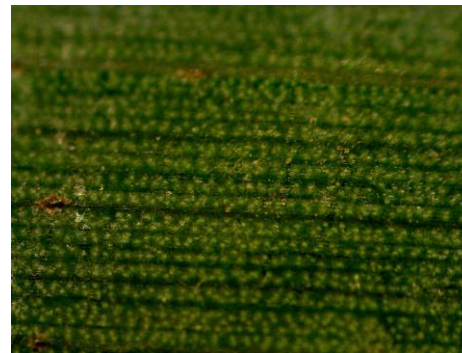
	Cuticle (mm)	Epidermis (mm)	Lamina (mm)
Mature leaf	0.0111	0.031	0.40
Young leaf	0.0035	0.022	0.21

**Trachycarpus fortunei (Hook.) H. Wendl.
Areaceae**



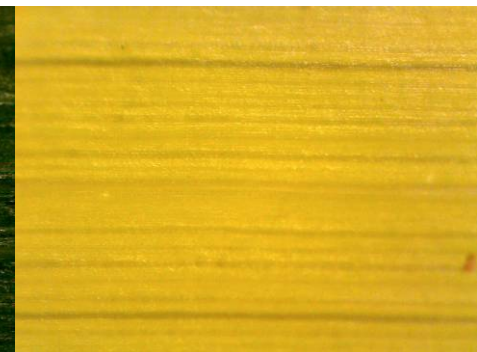
Mature leaf

Young leaf



Adaxial surface

Adaxial surface



Abaxial surface

Abaxial surface

	Cuticle (mm)	Epidermis (mm)	Lamina (mm)
Mature leaf	0.0045	0.022	0.22
Young leaf	0.0039	0.018	0.18