

Mulwa, R. K., Neuschulz, E. L., Böhning-Gaese, K. and Schleuning, M. 2013. Seasonal fluctuations of resource abundance and avian feeding guilds across forest-farmland boundaries in tropical Africa. – *Oikos* 122: 524–532.

Appendix A1

Figure A1. Temporal autocorrelation for pair-wise residuals with different time lags from mixed effects models of the effects of habitat type and seasonal fluctuations on (a) fruit abundance, (b) frugivore species richness, (c) frugivore abundance, (d) invertebrate abundance, (e) insectivore species richness, and (f) insectivore abundance (see Table 1 for model details). Dotted lines indicate thresholds of significant autocorrelation values at $p < 0.01$.

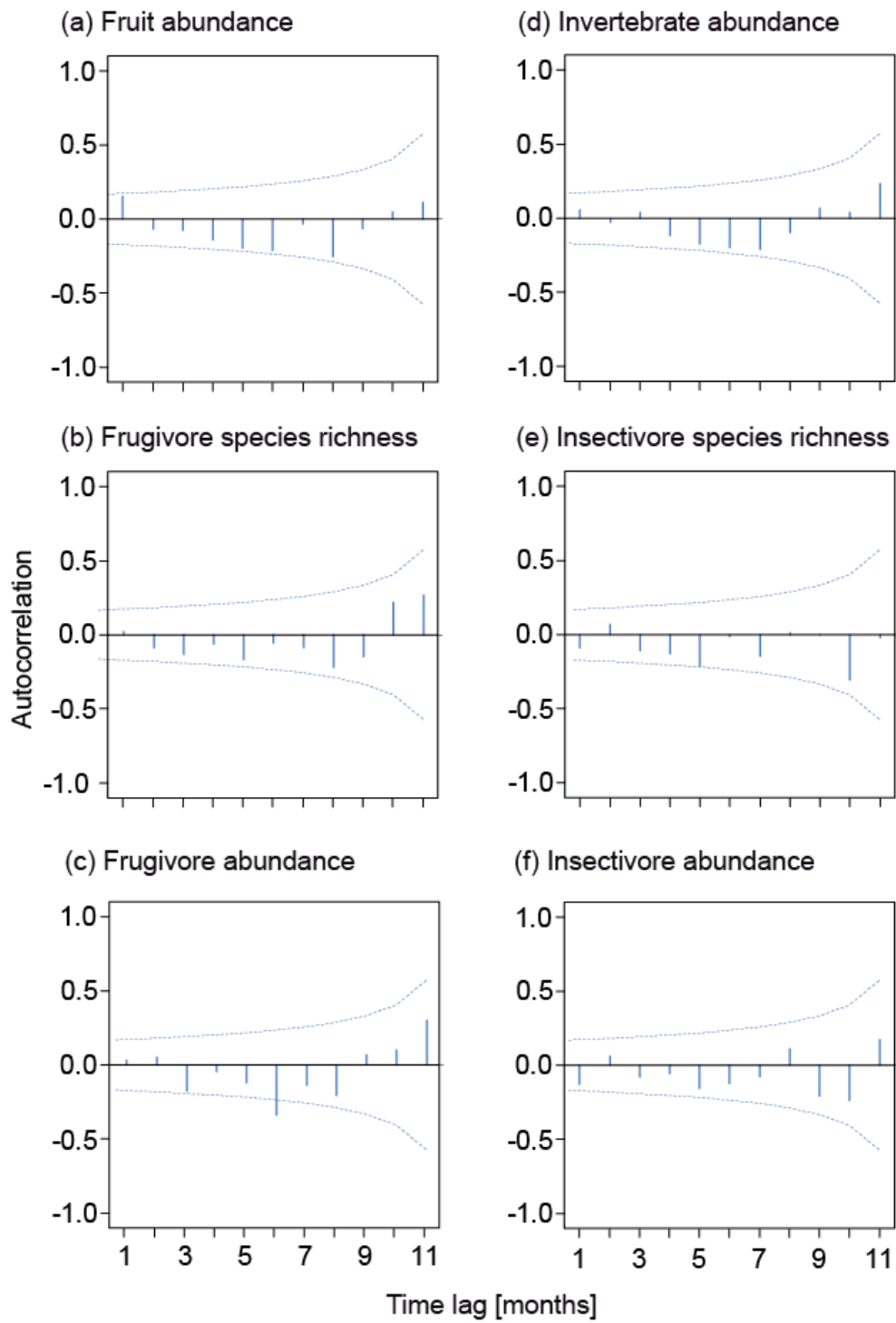


Table A1. Abundances for each bird species in each month and habitat type (forest and farmland) from February 2009 to January 2010. Guild affiliation and migratory status are indicated: frug = frugivore, ins = insectivore, omn = omnivore, For = forest bird, Farm = farmland bird, PM = Palearctic migrant, AM = Afrotropical migrant.

Common and scientific names	Guild	Habitat	S	F	M	A	M	J	J	A	S	O	N	D	J
			U M	E B	A R	P R	A Y	U N	U L	U G	E P	C T	O V	C N	E A
Crested guineafowl	frug	For	3	2	0	0	1	0	0	0	0	0	0	0	0
<i>Guttera pucherani</i>		Farm	0	0	0	0	0	0	0	0	0	0	0	0	0
Helmeted guineafowl	frug	For	0	0	0	0	0	0	0	0	0	0	0	0	0
<i>Numida meleagris</i>		Farm	20	1	3	2	3	3	4	3	0	0	0	1	0
African harrier hawk	frug	For	1	0	0	0	0	0	0	0	0	0	0	0	1
<i>Polyboroides typus</i>		Farm	8	1	4	0	2	0	0	0	1	0	0	0	0
African green pigeon	frug	For	1	0	0	0	1	0	0	0	0	0	0	0	0
<i>Treron calvus</i>		Farm	67	10	7	6	5	8	4	5	4	5	5	6	2
Eastern bronze-naped pigeon	frug	For	2	0	0	0	0	0	0	0	0	2	0	0	0
<i>Columba delegorguei</i>		Farm	0	0	0	0	0	0	0	0	0	0	0	0	0
Tambourine dove	frug	For	143	5	2	7	5	5	21	26	18	4	12	21	17
<i>Turtur tympanistria</i>		Farm	134	6	3	5	5	15	20	27	13	9	17	9	5
Meyer's parrot	frug	For	0	0	0	0	0	0	0	0	0	0	0	0	0
<i>Poicephalus meyeri</i>		Farm	6	0	0	0	0	1	0	0	0	2	0	0	3
Red-headed lovebird	frug	For	0	0	0	0	0	0	0	0	0	0	0	0	0
<i>Agapornis pullarius</i>		Farm	1	0	0	1	0	0	0	0	0	0	0	0	0
Black-billed turaco	frug	For	2	0	0	0	0	0	0	0	0	0	0	2	0
<i>Tauraco schuetti</i>		Farm	0	0	0	0	0	0	0	0	0	0	0	0	0
Eastern grey plantain-eater	frug	For	0	0	0	0	0	0	0	0	0	0	0	0	0
<i>Crinifer zonurus</i>		Farm	20	0	2	0	2	1	2	2	3	4	2	1	1
Great blue turaco	frug	For	6	0	0	0	1	1	0	0	0	0	1	0	3
<i>Corythaeola cristata</i>		Farm	0	0	0	0	0	0	0	0	0	0	0	0	0
Ross's turaco	frug	For	9	1	0	0	0	0	0	0	0	2	0	3	3
<i>Musophaga rossae</i>		Farm	23	5	3	3	2	2	1	1	2	1	2	1	0
White-crested turaco	frug	For	0	0	0	0	0	0	0	0	0	0	0	0	0
<i>Tauraco leucolophus</i>		Farm	1	0	0	1	0	0	0	0	0	0	0	0	0
Speckled mousebird	frug	For	7	0	0	0	0	1	1	2	3	0	0	0	0
<i>Colius striatus</i>		Farm	313	36	35	28	15	31	33	29	37	23	18	12	16
Black-and-white C. hornbill	frug	For	76	8	6	5	2	2	1	0	6	9	8	16	13
<i>Bycanistes subcylindricus</i>		Farm	17	0	2	1	1	1	2	3	5	2	0	0	0
Hairy-breasted barbet	frug	For	21	1	1	0	4	1	0	0	3	1	3	3	4
<i>Tricholaema hirsuta</i>		Farm	0	0	0	0	0	0	0	0	0	0	0	0	0
Spot-flanked barbet	frug	For	0	0	0	0	0	0	0	0	0	0	0	0	0
<i>Tricholaema lacrymosa</i>		Farm	1	0	0	0	0	0	0	0	0	1	0	0	0
Yellow-billed barbet	omn	For	99	17	5	4	3	2	9	11	6	11	8	8	15
<i>Trachylaemus purpuratus</i>		Farm	0	0	0	0	0	0	0	0	0	0	0	0	0

Yellow-rumped tinkerbird	frug	For	349	62	38	12	2	17	22	37	29	34	30	29	37
<i>Pogoniulus bilineatus</i>		Farm	103	12	13	7	3	7	10	15	14	4	5	7	6
Yellow-spotted barbet	frug	For	121	12	11	8	13	7	1	3	9	17	10	18	12
<i>Buccanodon duchaillui</i>		Farm	0	0	0	0	0	0	0	0	0	0	0	0	0
Ansorge's greenbul	frug	For	15	0	3	0	1	0	0	0	1	4	2	1	3
<i>Andropadus ansorgei</i>		Farm	0	0	0	0	0	0	0	0	0	0	0	0	0
Common bulbul	frug	For	241	31	22	13	33	15	20	22	23	19	8	22	13
<i>Pycnonotus barbatus</i>		Farm	634	67	71	66	34	51	46	44	75	47	39	56	38
Honeyguide greenbul	frug	For	45	1	3	7	7	5	4	3	4	3	6	1	1
<i>Baeopogon indicator</i>		Farm	1	0	0	0	0	0	0	0	1	0	0	0	0
Joyful greenbul	frug	For	44	8	3	6	6	6	2	1	5	2	2	0	3
<i>Chlorocichla laetissima</i>		Farm	1	0	0	1	0	0	0	0	0	0	0	0	0
Little grey greenbul	frug	For	26	0	0	0	0	0	4	5	4	3	4	0	6
<i>Andropadus gracilis</i>		Farm	0	0	0	0	0	0	0	0	0	0	0	0	0
Plain greenbul	frug	For	42	4	4	2	0	1	5	1	2	6	7	3	7
<i>Andropadus curvirostris</i>		Farm	0	0	0	0	0	0	0	0	0	0	0	0	0
Slender-billed greenbul	frug	For	25	1	0	0	0	0	0	0	5	6	3	7	3
<i>Andropadus gracilirostris</i>		Farm	0	0	0	0	0	0	0	0	0	0	0	0	0
Yellow-throated leaflove	frug	For	3	0	0	1	0	0	1	0	0	0	0	1	0
<i>Chlorocichla flavicollis</i>		Farm	235	24	22	19	18	26	17	27	19	15	13	18	17
<i>Sylvia atricapilla</i>	PM	Farm	1	0	0	0	0	0	0	0	0	0	0	1	0
Stuhlmann's starling	frug	For	4	0	1	2	0	0	0	0	0	0	0	0	1
<i>Poeoptera stuhlmanni</i>		Farm	1	0	0	1	0	0	0	0	0	0	0	0	0
Violet-backed starling	frug	For	8	2	1	0	3	2	0	0	0	0	0	0	0
<i>Cynniricinclus leucogaster</i>	AM	Farm	41	15	12	7	3	0	0	1	1	0	0	1	1
Collared sunbird	frug	For	42	18	6	0	2	0	0	0	3	2	4	5	2
<i>Hedydipna collaris</i>		Farm	0	0	0	0	0	0	0	0	0	0	0	0	0
Pin-tailed whydah	frug	For	1	0	0	0	0	0	0	0	0	1	0	0	0
<i>Vidua macroura</i>		Farm	34	0	0	3	3	1	7	12	5	3	0	0	0
Brimstone canary	frug	For	0	0	0	0	0	0	0	0	0	0	0	0	0
<i>Crithagra sulphurata</i>		Farm	3	0	0	0	0	0	2	0	0	1	0	0	0
Crested francolin	ins	For	0	0	0	0	0	0	0	0	0	0	0	0	0
<i>Francolinus sephaena</i>		Farm	1	0	1	0	0	0	0	0	0	0	0	0	0
Abdim's stork	ins	For	0	0	0	0	0	0	0	0	0	0	0	0	0
<i>Ciconia abdimii</i>	AM	Farm	3	0	2	0	0	1	0	0	0	0	0	0	0
Hadada ibis	ins	For	2	0	0	0	0	0	0	0	0	0	1	1	0
<i>Bostrychia hagedash</i>		Farm	36	2	4	4	1	4	5	6	4	3	0	1	2
Sacred ibis	ins	For	0	0	0	0	0	0	0	0	0	0	0	0	0
<i>Threskiornis aethiopicus</i>		Farm	1	0	0	0	0	1	0	0	0	0	0	0	0
White-spotted flufftail	ins	For	15	1	1	0	0	0	0	0	0	1	5	3	4
<i>Sarothrura pulchra</i>		Farm	0	0	0	0	0	0	0	0	0	0	0	0	0
Grey crowned crane	ins	For	0	0	0	0	0	0	0	0	0	0	0	0	0
<i>Balearica regulorum</i>		Farm	5	0	1	0	1	0	0	2	0	1	0	0	0
African emerald cuckoo	ins	For	12	0	2	4	0	0	2	2	1	0	0	0	1
<i>Chrysococcyx cupreus</i>		Farm	1	0	0	0	0	0	1	0	0	0	0	0	0
Blue-headed coucal	ins	For	0	0	0	0	0	0	0	0	0	0	0	0	0
<i>Centropus monachus</i>		Farm	5	0	1	0	0	0	3	0	0	1	0	0	0

Diederik cuckoo	ins	For	0	0	0	0	0	0	0	0	0	0	0	0	0
<i>Chrysococcyx caprius</i>	am	Farm	3	0	0	0	0	0	0	0	1	1	0	0	1
Common cuckoo	ins	For	0	0	0	0	0	0	0	0	0	0	0	0	0
<i>Cuculus canorus</i>	PM	Farm	1	0	0	1	0	0	0	0	0	0	0	0	0
Klaas's cuckoo	ins	For	18	0	1	1	3	4	0	3	0	2	2	2	0
<i>Chrysococcyx klaas</i>		Farm	20	0	4	1	1	1	5	6	1	1	0	0	0
Red-chested cuckoo	ins	For	43	1	5	3	8	8	7	8	3	0	0	0	0
<i>Cuculus solitarius</i>	am	Farm	21	3	2	5	5	1	1	0	0	0	0	1	3
Yellowbill	ins	For	4	0	0	0	0	0	3	1	0	0	0	0	0
<i>Ceuthmochares aereus</i>	am	Farm	0	0	0	0	0	0	0	0	0	0	0	0	0
Bar-tailed trogon	ins	For	7	4	0	1	0	0	0	0	0	1	1	0	0
<i>Apaloderma vittatum</i>		Farm	0	0	0	0	0	0	0	0	0	0	0	0	0
Narina trogon	ins	For	9	0	0	1	0	1	0	0	1	0	1	2	3
<i>Apaloderma narina</i>		Farm	0	0	0	0	0	0	0	0	0	0	0	0	0
African pygmy kingfisher	ins	For	1	0	1	0	0	0	0	0	0	0	0	0	0
<i>Ceyx pictus</i>	am	Farm	21	1	6	5	0	1	1	2	3	0	1	0	1
Grey-headed kingfisher	ins	For	0	0	0	0	0	0	0	0	0	0	0	0	0
<i>Halcyon leucocephala</i>	am	Farm	2	0	0	0	0	0	1	0	1	0	0	0	0
Woodland kingfisher	ins	For	0	0	0	0	0	0	0	0	0	0	0	0	0
<i>Halcyon senegalensis</i>	am	Farm	3	0	2	0	0	0	0	0	0	0	1	0	0
Blue-headed bee-eater	ins	For	11	0	1	2	1	3	0	0	1	2	0	1	0
<i>Merops muelleri</i>		Farm	0	0	0	0	0	0	0	0	0	0	0	0	0
Cinamon-chested bee-eater	ins	For	0	0	0	0	0	0	0	0	0	0	0	0	0
<i>Merops oreobates</i>		Farm	1	0	0	0	0	0	0	0	1	0	0	0	0
Eurasian bee-eater	ins	For	0	0	0	0	0	0	0	0	0	0	0	0	0
<i>Merops apiaster</i>	PM	Farm	12	2	3	1	0	0	0	0	0	3	1	0	2
Little bee-eater	ins	For	0	0	0	0	0	0	0	0	0	0	0	0	0
<i>Merops pusillus</i>		Farm	10	2	2	2	1	1	0	0	2	0	0	0	0
White-throated bee-eater	ins	For	1	0	0	0	0	0	0	0	0	0	0	1	0
<i>Merops albicollis</i>	AM	Farm	1	0	0	0	0	1	0	0	0	0	0	0	0
Hoopoe	ins	For	0	0	0	0	0	0	0	0	0	0	0	0	0
<i>Upupa epops</i>	AM, PM	Farm	1	1	0	0	0	0	0	0	0	0	0	0	0
White-headed wood-hoopoe	ins	For	26	4	3	5	0	2	1	1	4	0	1	3	2
<i>Phoeniculus bollei</i>		Farm	0	0	0	0	0	0	0	0	0	0	0	0	0
Cassin's honeybird	ins	For	1	0	0	0	0	0	0	0	0	0	0	0	1
<i>Prodotiscus insignis</i>		Farm	0	0	0	0	0	0	0	0	0	0	0	0	0
Least honeyguide	ins	For	4	0	0	2	0	0	0	0	0	0	1	0	1
<i>Indicator exilis</i>		Farm	1	0	0	0	0	0	0	0	0	0	0	1	0
Lesser honeyguide	ins	For	2	0	1	1	0	0	0	0	0	0	0	0	0
<i>Indicator minor</i>		Farm	0	0	0	0	0	0	0	0	0	0	0	0	0
Thick-billed honeyguide	ins	For	1	0	0	0	0	1	0	0	0	0	0	0	0
<i>Indicator conirostris</i>		Farm	0	0	0	0	0	0	0	0	0	0	0	0	0
African grey woodpecker	ins	For	0	0	0	0	0	0	0	0	0	0	0	0	0
<i>Dendropicos goertae</i>		Farm	18	4	2	1	1	0	0	0	1	3	2	2	2
Brown-eared woodpecker	ins	For	22	2	4	3	2	2	5	0	1	1	1	0	1
<i>Campethera caroli</i>		Farm	0	0	0	0	0	0	0	0	0	0	0	0	0
Buff-spotted woodpecker	ins	For	10	4	1	3	0	0	0	0	0	2	0	0	0

<i>Campethera nivosa</i>		Farm	7	2	0	0	0	0	0	0	2	1	0	0	2
Cardinal woodpecker	ins	For	14	3	1	3	0	2	3	1	0	1	0	0	0
<i>Dendropicos fuscescens</i>		Farm	10	1	2	1	0	0	1	1	0	1	1	0	2
Red-throated wryneck	ins	For	0	0	0	0	0	0	0	0	0	0	0	0	0
<i>Jynx ruficollis</i>		Farm	1	1	0	0	0	0	0	0	0	0	0	0	0
Yellow-crested woodpecker	ins	For	8	2	0	1	0	3	0	0	0	0	0	1	1
<i>Dendropicos xantholophus</i>		Farm	0	0	0	0	0	0	0	0	0	0	0	0	0
African broadbill	ins	For	17	1	1	1	1	1	0	0	5	1	1	3	2
<i>Smithornis capensis</i>		Farm	0	0	0	0	0	0	0	0	0	0	0	0	0
Brown-throated wattle-eye	ins	For	84	8	13	4	10	4	7	10	10	6	4	4	4
<i>Platysteira cyanea</i>		Farm	57	8	4	8	5	1	7	7	3	4	6	4	0
Chestnut wattle-eye	ins	For	18	2	2	1	1	0	3	2	6	0	1	0	0
<i>Dyaphorophya castanea</i>		Farm	0	0	0	0	0	0	0	0	0	0	0	0	0
Jameson's wattle-eye	ins	For	108	8	6	3	8	3	8	8	13	19	13	10	9
<i>Dyaphorophya jamesoni</i>		Farm	0	0	0	0	0	0	0	0	0	0	0	0	0
Shrike flycatcher	ins	For	4	1	0	0	0	1	0	0	1	0	0	1	0
<i>Megabyas flammulatus</i>		Farm	0	0	0	0	0	0	0	0	0	0	0	0	0
Yellow-bellied wattle-eye	ins	For	1	0	0	1	0	0	0	0	0	0	0	0	0
<i>Dyaphorophya concreta</i>		Farm	0	0	0	0	0	0	0	0	0	0	0	0	0
Black-crowned tchagra	ins	For	0	0	0	0	0	0	0	0	0	0	0	0	0
<i>Tchagra senegalus</i>		Farm	10	0	2	1	0	2	1	3	1	0	0	0	0
Bocage's bushshrike	ins	For	36	3	0	1	4	2	5	6	2	2	4	7	0
<i>Chlorophoneus bocagei</i>		Farm	1	0	0	0	0	0	0	0	0	0	0	1	0
Brown-crowned tchagra	ins	For	0	0	0	0	0	0	0	0	0	0	0	0	0
<i>Tchagra australis</i>		Farm	16	2	4	3	1	0	0	0	1	1	1	2	1
Luhder's bushshrike	ins	For	26	0	0	0	0	0	4	5	4	3	4	0	6
<i>Laniarius luehderi</i>		Farm	0	0	0	0	0	0	0	0	0	0	0	0	0
Marsh tchagra	ins	For	0	0	0	0	0	0	0	0	0	0	0	0	0
<i>Tchagra minutus</i>		Farm	2	1	0	0	1	0	0	0	0	0	0	0	0
Northern puffback	ins	For	0	0	0	0	0	0	0	0	0	0	0	0	0
<i>Dryoscopus gambensis</i>		Farm	3	2	0	0	0	0	0	1	0	0	0	0	0
Pink-footed puffback	ins	For	13	1	1	0	0	0	0	1	4	2	1	1	2
<i>Dryoscopus angolensis</i>		Farm	0	0	0	0	0	0	0	0	0	0	0	0	0
Tropical boubou	ins	For	17	0	1	0	0	1	5	5	3	0	0	1	1
<i>Laniarius aethiopicus</i>		Farm	137	8	9	4	9	11	16	21	19	12	7	10	11
Black cuckooshrike	ins	For	0	0	0	0	0	0	0	0	0	0	0	0	0
<i>Campephaga flava</i>	Am	Farm	1	0	0	0	0	0	0	0	1	0	0	0	0
Petit's cuckooshrike	ins	For	11	0	0	2	3	4	0	0	0	0	0	1	1
<i>Campephaga petiti</i>		Farm	0	0	0	0	0	0	0	0	0	0	0	0	0
Red-shouldered cuckooshrike	ins	For	1	0	0	0	0	0	0	0	0	0	1	0	0
<i>Campephaga phoenicea</i>		Farm	0	0	0	0	0	0	0	0	0	0	0	0	0
Common fiscal	ins	For	0	0	0	0	0	0	0	0	0	0	0	0	0
<i>Lanius collaris</i>		Farm	159	7	24	19	9	20	3	13	8	15	13	13	15
Western oriole	ins	For	70	4	3	2	2	6	6	4	6	8	13	9	7
<i>Oriolus brachyrhynchus</i>		Farm	0	0	0	0	0	0	0	0	0	0	0	0	0
Square-tailed drongo	ins	For	164	15	14	14	12	9	16	24	16	9	14	11	10
<i>Dicrurus ludwigii</i>		Farm	0	0	0	0	0	0	0	0	0	0	0	0	0

African blue flycatcher	ins	For	29	11	6	1	0	0	0	0	3	3	0	1	4
<i>Elminia longicauda</i>		Farm	149	24	18	13	6	14	17	17	15	7	4	8	6
African paradise flycatcher	ins	For	56	5	6	2	9	6	1	4	6	0	6	7	4
<i>Terpsiphone viridis</i>	am	Farm	32	6	3	6	2	0	1	0	2	4	1	4	3
Dusky crested flycatcher	ins	For	24	0	1	1	0	0	4	10	2	1	2	2	1
<i>Elminia nigromitrata</i>		Farm	0	0	0	0	0	0	0	0	0	0	0	0	0
Pied crow	ins	For	0	0	0	0	0	0	0	0	0	0	0	0	0
<i>Corvus albus</i>		Farm	5	0	0	0	0	1	2	0	0	0	2	0	0
Dusky tit	ins	For	21	2	1	3	2	3	0	0	1	3	0	6	0
<i>Parus funereus</i>		Farm	0	0	0	0	0	0	0	0	0	0	0	0	0
Barn swallow	ins	For	0	0	0	0	0	0	0	0	0	0	0	0	0
<i>Hirundo rustica</i>	PM	Farm	17	5	1	6	2	0	0	0	0	0	1	2	0
Black saw-wing	ins	For	4	0	1	0	1	1	0	0	0	0	0	1	0
<i>Psalidoprocne pristoptera</i>		Farm	52	8	5	8	1	15	0	0	3	5	6	0	1
Common house martin	ins	For	0	0	0	0	0	0	0	0	0	0	0	0	0
<i>Delichon urbica</i>	PM	Farm	10	0	0	0	0	0	0	0	2	1	4	0	3
Lesser striped swallow	ins	For	0	0	0	0	0	0	0	0	0	0	0	0	0
<i>Cecropis abyssinica</i>		Farm	17	2	3	3	2	2	3	0	0	0	1	1	0
Mosque swallow	ins	For	0	0	0	0	0	0	0	0	0	0	0	0	0
<i>Cecropis senegalensis</i>		Farm	2	0	0	2	0	0	0	0	0	0	0	0	0
White-headed saw-wing	ins	For	1	0	0	0	0	0	1	0	0	0	0	0	0
<i>Psalidoprocne albiceps</i>		Farm	27	2	9	4	3	2	1	0	3	3	0	0	0
Banded prinia	ins	For	2	2	0	0	0	0	0	0	0	0	0	0	0
<i>Prinia bairdii</i>		Farm	0	0	0	0	0	0	0	0	0	0	0	0	0
Black-collared apalis	ins	For	14	3	1	3	1	0	0	0	1	2	0	1	2
<i>Apalis pulchra</i>		Farm	37	2	2	3	6	1	2	1	6	5	3	3	3
Black-throated apalis	ins	For	8	0	0	8	0	0	0	0	0	0	0	0	0
<i>Apalis jacksoni</i>		Farm	3	2	0	1	0	0	0	0	0	0	0	0	0
Buff-throated apalis	ins	For	47	1	4	10	4	13	1	3	2	5	1	3	0
<i>Apalis rufogularis</i>		Farm	1	0	0	0	0	1	0	0	0	0	0	0	0
Chestnut-throated apalis	ins	For	1	0	0	1	0	0	0	0	0	0	0	0	0
<i>Apalis porphyrolaema</i>		Farm	0	0	0	0	0	0	0	0	0	0	0	0	0
Chubb's cisticola	ins	For	0	0	0	0	0	0	0	0	0	0	0	0	0
<i>Cisticola chubbi</i>		Farm	226	5	26	47	7	24	39	34	15	6	6	12	5
Grey-backed camaroptera	ins	For	226	23	26	25	19	18	25	27	21	13	13	11	5
<i>Camaroptera brachyura</i>		Farm	198	19	17	15	7	17	32	33	14	11	11	11	11
Grey-capped warbler	ins	For	0	0	0	0	0	0	0	0	0	0	0	0	0
<i>Eminia lepida</i>		Farm	3	1	1	0	0	0	0	0	0	0	1	0	0
Hunter's cisticola	ins	For	0	0	0	0	0	0	0	0	0	0	0	0	0
<i>Cisticola hunteri</i>		Farm	2	0	0	0	0	0	0	0	0	0	0	0	2
Olive-green camaroptera	ins	For	294	32	28	20	24	30	19	21	17	28	26	26	23
<i>Camaroptera chloronota</i>		Farm	1	0	0	1	0	0	0	0	0	0	0	0	0
Rattling cisticola	ins	For	0	0	0	0	0	0	0	0	0	0	0	0	0
<i>Cisticola chiniana</i>		Farm	22	6	4	1	5	0	0	0	2	1	0	3	0
Siffling cisticola	ins	For	0	0	0	0	0	0	0	0	0	0	0	0	0
<i>Cisticola brachypterus</i>		Farm	13	0	0	0	0	0	0	0	0	2	5	2	4
Singing cisticola	ins	For	0	0	0	0	0	0	0	0	0	0	0	0	0

<i>Cisticola cantans</i>		Farm	148	29	9	1	12	0	0	7	18	22	21	12	17
Tawny-flanked prinia	ins	For	4	1	0	1	0	0	0	0	0	0	0	0	2
<i>Prinia subflava</i>		Farm	90	17	10	8	11	1	0	1	10	6	10	6	10
White-chinned prinia	ins	For	8	4	1	1	1	0	0	0	1	0	0	0	0
<i>Schistolais leucopogon</i>		Farm	12	3	2	1	3	1	1	1	0	0	0	0	0
Yellow-breasted apalis	ins	For	0	0	0	0	0	0	0	0	0	0	0	0	0
<i>Apalis flavida</i>		Farm	2	0	0	0	0	1	0	0	0	0	1	0	0
Cabanis's greenbul	ins	For	168	9	13	32	10	33	24	23	10	1	6	2	5
<i>Phyllastrephus cabanisi</i>		Farm	0	0	0	0	0	0	0	0	0	0	0	0	0
Red-tailed bristlebill	ins	For	151	0	1	15	32	21	12	19	13	10	12	4	12
<i>Bleda syndactyla</i>		Farm	0	0	0	0	0	0	0	0	0	0	0	0	0
Toro olive greenbul	ins	For	45	2	5	14	11	11	0	0	0	1	0	1	0
<i>Phyllastrephus hypochloris</i>		Farm	0	0	0	0	0	0	0	0	0	0	0	0	0
Black-faced rufous warbler	ins	For	190	21	18	24	20	18	18	26	7	10	8	10	10
<i>Bathmocercus rufus</i>		Farm	1	0	0	0	0	0	0	1	0	0	0	0	0
Dark-capped yellow warbler	ins	For	3	0	0	0	0	0	1	1	1	0	0	0	0
<i>Chloropeta natalensis</i>		Farm	85	0	1	8	3	8	11	12	12	7	8	4	11
Eastern olivaceous warbler	ins	For	1	0	1	0	0	0	0	0	0	0	0	0	0
<i>Hippolais pallida</i>	PM	Farm	2	0	1	1	0	0	0	0	0	0	0	0	0
Green hylia	ins	For	1	1	0	0	0	0	0	0	0	0	0	0	0
<i>Hylia prasina</i>		Farm	0	0	0	0	0	0	0	0	0	0	0	0	0
Icterine warbler	ins	For	0	0	0	0	0	0	0	0	0	0	0	0	0
<i>Hippolais icterina</i>	PM	Farm	2	1	0	1	0	0	0	0	0	0	0	0	0
Moustached grass warbler	ins	For	0	0	0	0	0	0	0	0	0	0	0	0	0
<i>Melocichla mentalis</i>		Farm	3	0	0	0	0	0	0	1	1	0	0	1	0
Olive-tree warbler	ins	For	0	0	0	0	0	0	0	0	0	0	0	0	0
<i>Hippolais olivetorum</i>	PM	Farm	1	0	1	0	0	0	0	0	0	0	0	0	0
Southern hylia	ins	For	2	0	0	1	0	0	0	0	0	1	0	0	0
<i>Hylia australis</i>		Farm	0	0	0	0	0	0	0	0	0	0	0	0	0
Turner's eremomela	ins	For	27	3	3	0	1	0	0	0	1	7	2	3	7
<i>Eremomela turneri</i>		Farm	0	0	0	0	0	0	0	0	0	0	0	0	0
Uganda woodland warbler	ins	For	303	33	35	33	26	25	10	23	21	24	20	22	31
<i>Phylloscopus budongoensis</i>		Farm	0	0	0	0	0	0	0	0	0	0	0	0	0
Willow warbler	ins	For	6	2	2	0	0	0	0	0	0	0	0	2	0
<i>Phylloscopus trochilus</i>	PM	Farm	10	2	4	2	0	0	0	0	0	1	0	1	0
Arrow-marked babbler	ins	For	0	0	0	0	0	0	0	0	0	0	0	0	0
<i>Turdoides jardineii</i>		Farm	1	0	0	0	0	1	0	0	0	0	0	0	0
Brown babbler	ins	For	0	0	0	0	0	0	0	0	0	0	0	0	0
<i>Turdoides plebejus</i>		Farm	19	0	1	2	1	1	2	1	3	1	1	2	4
Brown Illadopsis	ins	For	83	0	9	9	5	6	7	9	2	3	4	9	20
<i>Illadopsis fulvescens</i>		Farm	1	0	0	0	0	0	0	0	0	0	0	0	1
Grey-chested babbler	ins	For	1	0	0	0	0	1	0	0	0	0	0	0	0
<i>Kakamega poliothorax</i>		Farm	52	6	9	5	9	5	0	0	0	2	4	6	6
Mountain illadopsis	ins	For	2	0	0	0	0	0	0	0	0	1	0	0	1
<i>Illadopsis pyrrhoptera</i>		Farm	0	0	0	0	0	0	0	0	0	0	0	0	0
Pale-breasted illadopsis	ins	For	157	26	7	0	4	0	4	2	8	21	22	28	35
<i>Illadopsis rufipennis</i>		Farm	0	0	0	0	0	0	0	0	0	0	0	0	0

Scaly-breasted illadopsis	ins	For	174	9	18	28	16	29	17	29	12	5	7	4	0
<i>Illadopsis albipectus</i>		Farm	0	0	0	0	0	0	0	0	0	0	0	0	0
African yellow white-eye	ins	For	49	4	7	7	8	7	2	7	2	2	0	3	0
<i>Zosterops senegalensis</i>		Farm	121	19	18	14	7	13	12	10	10	3	6	4	5
Superb starling	ins	For	0	0	0	0	0	0	0	0	0	0	0	0	0
<i>Lamprotornis superbus</i>		Farm	1	0	0	0	0	0	0	0	0	0	0	0	1
Brown-chested alethe	ins	For	59	7	9	3	4	1	0	0	3	3	4	11	14
<i>Alethe poliocephala</i>		Farm	0	0	0	0	0	0	0	0	0	0	0	0	0
White-tailed ant thrush	ins	For	99	4	16	11	8	4	17	13	6	2	5	5	8
<i>Neocossyphus poensis</i>		Farm	0	0	0	0	0	0	0	0	0	0	0	0	0
African dusky flycatcher	ins	For	1	0	1	0	0	0	0	0	0	0	0	0	0
<i>Muscicapa adusta</i>		Farm	20	0	0	0	1	2	8	4	1	2	0	0	2
African grey flycatcher	ins	For	0	0	0	0	0	0	0	0	0	0	0	0	0
<i>Bradornis microrhynchus</i>		Farm	1	0	1	0	0	0	0	0	0	0	0	0	0
Blue-shouldered robin-chat	ins	For	132	20	16	16	7	2	10	11	8	10	11	11	10
<i>Cossypha cyanocampter</i>		Farm	0	0	0	0	0	0	0	0	0	0	0	0	0
Brown-backed scrub robin	ins	For	6	3	2	0	0	0	0	0	0	0	0	0	1
<i>Cercotrichas hartlaubi</i>		Farm	60	15	5	10	6	11	8	4	0	0	0	1	0
Common stonechat	ins	For	0	0	0	0	0	0	0	0	0	0	0	0	0
<i>Saxicola torquata</i>		Farm	45	9	3	3	5	4	7	5	3	2	2	1	1
Equatorial akalat	ins	For	110	16	7	7	12	15	12	15	9	3	6	6	2
<i>Sheppardia aequatorialis</i>		Farm	0	0	0	0	0	0	0	0	0	0	0	0	0
Grey-winged robin	ins	For	10	1	3	2	0	3	0	0	0	0	1	0	0
<i>Sheppardia polioptera</i>		Farm	1	0	0	1	0	0	0	0	0	0	0	0	0
Northern black flycatcher	ins	For	6	0	0	1	1	0	0	0	2	1	1	0	0
<i>Melaenornis edolioides</i>		Farm	141	11	17	10	8	11	15	14	17	6	9	12	11
Pale flycatcher	ins	For	1	1	0	0	0	0	0	0	0	0	0	0	0
<i>Bradornis pallidus</i>		Farm	22	2	5	3	0	0	5	2	2	1	2	0	0
Whinchat	ins	For	0	0	0	0	0	0	0	0	0	0	0	0	0
<i>Saxicola rubetra</i>	PM	Farm	9	5	2	0	0	0	0	0	0	1	0	1	0
White-browed robin-chat	ins	For	19	1	2	0	3	2	1	2	2	0	6	0	0
<i>Cossypha heuglini</i>		Farm	180	15	14	14	14	9	18	14	16	15	24	12	15
White-browed scrub robin	ins	For	4	0	0	0	0	3	0	0	0	0	0	1	0
<i>Cercotrichas leucophrys</i>		Farm	74	3	8	6	0	9	12	16	7	6	0	7	0
White-eyed slaty flycatcher	ins	For	0	0	0	0	0	0	0	0	0	0	0	0	0
<i>Melaenornis fischeri</i>		Farm	3	1	0	1	0	1	0	0	0	0	0	0	0
Bronze sunbird	ins	For	18	0	4	2	0	0	0	1	2	4	3	2	0
<i>Nectarinia kilimensis</i>		Farm	389	47	42	33	31	30	32	40	33	30	20	24	27
Copper sunbird	ins	For	0	0	0	0	0	0	0	0	0	0	0	0	0
<i>Cinnyris cupreus</i>		Farm	1	0	0	0	0	0	0	0	0	0	1	0	0
Green-headed sunbird	ins	For	2	0	0	0	0	0	0	0	0	1	1	0	0
<i>Cyanomitra verticalis</i>		Farm	6	0	0	0	0	3	0	1	1	0	0	0	1
Northern double-collared sunbird	ins	For	7	0	4	0	0	0	0	0	0	1	1	0	1
<i>Cinnyris reichenowi</i>		Farm	25	4	4	4	1	0	0	0	4	5	1	1	1
Olive-bellied sunbird	ins	For	3	0	0	0	0	0	2	0	0	0	0	1	0
<i>Cinnyris chloropygius</i>		Farm	2	1	1	0	0	0	0	0	0	0	0	0	0

Scarlet-chested sunbird	ins	For	0	0	0	0	0	0	0	0	0	0	0	0
<i>Chalcomitra senegalensis</i>		Farm	18	5	2	2	1	1	0	1	4	0	1	0
Variable sunbird	ins	For	14	1	6	1	3	1	0	0	0	2	0	0
<i>Cinnyris venustus</i>		Farm	63	2	2	1	1	11	2	2	8	11	7	13
Western violet-backed sunbird	ins	For	0	0	0	0	0	0	0	0	0	0	0	0
<i>Anthreptes longuemarei</i>		Farm	1	0	0	1	0	0	0	0	0	0	0	0
Baglafaecht weaver	ins	For	0	0	0	0	0	0	0	0	0	0	0	0
<i>Ploceus baglafaecht</i>		Farm	185	17	25	14	17	17	10	8	15	22	15	11
Black-necked weaver	ins	For	2	0	0	0	0	0	0	0	0	1	1	0
<i>Ploceus nigricollis</i>		Farm	4	0	3	0	0	0	0	0	0	0	1	0
Marsh widowbird	ins	For	0	0	0	0	0	0	0	0	0	0	0	0
<i>Euplectes hartlaubi</i>		Farm	4	0	0	0	2	1	0	0	0	1	0	0
Red-headed malimbe	ins	For	14	0	0	2	3	4	0	0	0	1	2	2
<i>Malimbus rubricollis</i>		Farm	0	0	0	0	0	0	0	0	0	0	0	0
Spectacled weaver	ins	For	7	0	0	0	0	1	1	2	3	0	0	0
<i>Ploceus ocularis</i>		Farm	313	36	35	28	15	31	33	29	37	23	18	12
Speke's weaver	ins	For	0	0	0	0	0	0	0	0	0	0	0	0
<i>Ploceus spekei</i>		Farm	4	3	1	0	0	0	0	0	0	0	0	0
Yellow bishop	ins	For	0	0	0	0	0	0	0	0	0	0	0	0
<i>Euplectes capensis</i>		Farm	27	10	6	2	7	0	0	0	0	2	0	0
Black-rumped waxbill	ins	For	0	0	0	0	0	0	0	0	0	0	0	0
<i>Estrilda troglodytes</i>		Farm	1	0	0	0	0	1	0	0	0	0	0	0
Brown twinspot	ins	For	0	0	0	0	0	0	0	0	0	0	0	0
<i>Clytospiza montei</i>		Farm	3	0	0	0	0	0	0	2	0	0	1	0
Red-headed bluebill	ins	For	74	33	23	13	0	4	0	0	0	0	1	0
<i>Spermophaga ruficapilla</i>		Farm	3	0	0	0	0	1	0	0	2	0	0	0
Vieillot's black weaver	ins	For	0	0	0	0	0	0	0	0	0	0	0	0
<i>Ploceus nigerrimus</i>		Farm	13	4	2	2	1	0	0	0	1	0	0	2
African pied wagtail	ins	For	0	0	0	0	0	0	0	0	0	0	0	0
<i>Motacilla aguimp</i>		Farm	94	8	8	11	2	9	13	11	8	5	4	10
Grassland pipit	ins	For	1	1	0	0	0	0	0	0	0	0	0	0
<i>Anthus cinnamomeus</i>		Farm	8	2	2	2	0	0	0	0	0	1	0	0
Plain-backed pipit	ins	For	0	0	0	0	0	0	0	0	0	0	0	0
<i>Anthus leucophrys</i>		Farm	2	0	0	0	0	0	0	0	0	2	0	0
Yellow wagtail	ins	For	0	0	0	0	0	0	0	0	0	0	0	0
<i>Motacilla flava</i>	PM	Farm	10	0	0	0	0	0	2	0	0	3	1	1
Yellow-throated longclaw	ins	For	0	0	0	0	0	0	0	0	0	0	0	0
<i>Macronyx croceus</i>		Farm	21	1	0	2	0	3	1	2	4	4	1	3
Streaky seedeater	ins	For	0	0	0	0	0	0	0	0	0	0	0	0
<i>Crithagra striolata</i>		Farm	3	1	0	0	0	0	0	1	0	0	0	1
Double-toothed barbet	omn	For	1	0	0	0	0	0	0	1	0	0	0	0
<i>Lybius bidentatus</i>		Farm	22	1	4	1	2	4	0	0	4	1	3	1
Grey-throated barbet	omn	For	94	4	3	7	11	12	7	16	10	7	6	4
<i>Gymnobucco bonapartei</i>		Farm	0	0	0	0	0	0	0	0	0	0	0	0
Yellow-billed barbet	omn	For	99	17	5	4	3	2	9	11	6	11	8	8
<i>Trachylaemus purpuratus</i>		Farm	0	0	0	0	0	0	0	0	0	0	0	0
Black-headed gonolek	omn	For	0	0	0	0	0	0	0	0	0	0	0	0

<i>Laniarius erythrogaster</i>		Farm	10	0	1	1	1	2	1	4	0	0	0	0
African golden oriole	omn	For	0	0	0	0	0	0	0	0	0	0	0	0
<i>Oriolus auratus</i>	AM	Farm	1	0	0	0	0	0	0	0	0	0	1	0
Little greenbul	omn	For	28	1	1	1	2	0	0	0	0	9	4	4
<i>Andropadus virens</i>		Farm	0	0	0	0	0	0	0	0	0	0	0	0
Shelley's greenbul	omn	For	24	4	3	4	1	2	1	3	1	0	1	3
<i>Andropadus masukuensis</i>		Farm	1	1	0	0	0	0	0	0	0	0	0	0
Yellow-whiskered greenbul	omn	For	629	88	70	72	54	50	51	47	39	49	45	31
<i>Andropadus latirostris</i>		Farm	3	0	0	1	1	1	0	0	0	0	0	0
Blackcap	omn	For	3	2	0	0	0	0	0	0	0	0	0	1
<i>Sylvia atricapilla</i>	PM	Farm	1	0	0	0	0	0	0	0	0	0	0	1
Lesser blue-eared starling	omn	For	0	0	0	0	0	0	0	0	0	0	0	0
<i>Lamprotornis chloropterus</i>		Farm	10	1	2	0	2	0	0	0	0	2	0	2
African thrush	omn	For	36	6	5	2	6	1	2	5	4	3	1	0
<i>Turdus pelios</i>		Farm	162	15	20	26	3	17	13	8	13	10	7	15
Olive thrush	omn	For	2	0	0	0	1	0	0	0	0	0	0	1
<i>Turdus olivaceus</i>		Farm	29	10	5	0	6	0	0	0	2	4	1	1
Red-capped robin-chat	omn	For	4	0	0	0	1	2	0	0	0	0	0	1
<i>Cossypha natalensis</i>	Am	Farm	0	0	0	0	0	0	0	0	0	0	0	0
Snowy-headed robin-chat	omn	For	5	2	0	0	1	0	0	0	1	0	0	0
<i>Cossypha niveicapilla</i>		Farm	1	0	0	0	0	0	0	1	0	0	0	0
Green-throated sunbird	omn	For	0	0	0	0	0	0	0	0	0	0	0	0
<i>Chalcomitra rubescens</i>		Farm	15	2	6	0	0	0	0	0	4	0	2	0
Olive sunbird	omn	For	105	1	5	25	20	23	8	13	2	1	2	2
<i>Cyanomitra olivacea</i>		Farm	1	0	0	0	0	0	1	0	0	0	0	0
Brown-capped weaver	omn	For	7	0	0	0	0	0	1	1	1	0	1	2
<i>Ploceus insignis</i>		Farm	0	0	0	0	0	0	0	0	0	0	0	0
Dark-backed weaver	omn	For	160	17	12	15	8	17	10	19	15	15	12	11
<i>Ploceus bicolor</i>		Farm	2	0	0	0	1	0	0	1	0	0	0	0
Grosbeak weaver	omn	For	0	0	0	0	0	0	0	0	0	0	0	0
<i>Amblyospiza albifrons</i>		Farm	5	0	1	1	0	0	0	0	1	0	1	1
Holub's golden weaver	omn	For	0	0	0	0	0	0	0	0	0	0	0	0
<i>Ploceus xanthops</i>		Farm	3	0	0	0	0	0	0	0	0	0	0	2
Village weaver	omn	For	0	0	0	0	0	0	0	0	0	0	0	0
<i>Ploceus cucullatus</i>		Farm	237	26	21	27	8	29	22	27	27	16	10	11
Yellow-mantled widowbird	omn	For	0	0	0	0	0	0	0	0	0	0	0	0
<i>Euplectes macrourus</i>		Farm	120	1	10	12	12	21	17	23	14	7	0	0
Common waxbill	omn	For	0	0	0	0	0	0	0	0	0	0	0	0
<i>Estrilda astrild</i>		Farm	1	0	0	0	0	0	0	0	1	0	0	0
Grey-headed negrofinch	omn	For	5	0	0	0	0	2	0	0	0	2	1	0
<i>Nigrita canicapilla</i>		Farm	6	0	0	0	1	1	2	0	0	1	1	0
African citril	omn	For	0	0	0	0	0	0	0	0	0	0	0	0
<i>Crithagra citrinelloides</i>		Farm	26	0	0	0	0	0	0	0	12	6	4	3